

Rosette for tap hole cover - Brushed Bronze

IMO

12 730 970












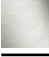



- rosette Ø 52 mm

For combination with exposed trim parts 33800875-FF / 33805875-FF / 33816875-FF / 33818875-FF / 33826875-FF / 13700845-FF / 13700846-FF / 20713845-FF / 20713846-FF /

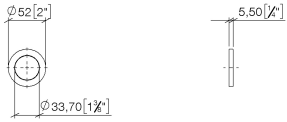
33500845-FF / 33506845-FF / 33521845-FF / 33526845-FF / 33526845-FF / 33500670-FF / 33521670-FF / 33537670-FF / 33600670-FF / 33800760-FF / 33800790-FF / 33826790-FF only.

Fits: IMO, LULU, MADISON, MEM, TARA, CL.1, LISSÉ, VAIA, META, CYO

	Brushed Bronze	12 730 970-42
	Chrome	12 730 970-00
	Brushed Platinum	12 730 970-06
	Platinum	12 730 970-08
	Dark Chrome	12 730 970-19
	Light Gold	12 730 970-26
	Brushed Light Gold	12 730 970-27
	Brushed Durabronze (23kt Gold)	12 730 970-28
	Matte Black	12 730 970-33
		12 730 970-39
		12 730 970-43
	Brushed Champagne (22kt Gold)	12 730 970-46
	Champagne (22kt Gold)	12 730 970-47
	Brushed Chrome	12 730 970-93
	Brushed Dark Platinum	12 730 970-99

12 730 970

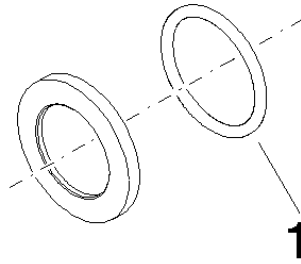
mm [inches]



12 730 970

Product version from 10/1/2023

Parts for other
finishes can be found
here: [Chrome](#)





Rosette for tap hole cover - Brushed Bronze

IMO

12 730 970

Spare parts list

Product version from 10/1/2023

No.	Item Number	Name	Quantity used	Delivery time
	90 14 10 043 00 90	seal	1	2