


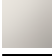

WATER SHEET Cascade spout for wall mounting - Brushed Bronze

SERIES-VARIOUS


13 415 979    Product version from 10/1/2023




- 150mm projection
- CASCADE, max. flow rate 26.5 l/min (at 3 bar)
- cover plate 240 x 60 mm
- 1/2" connection
- plug-link mounting
- WRAS

|   |                                     |               |
|---|-------------------------------------|---------------|
|    | Brushed Bronze                      | 13 415 979-42 |
|    | Chrome                              | 13 415 979-00 |
|    | Brushed Platinum                    | 13 415 979-06 |
|    | Platinum                            | 13 415 979-08 |
|    | Dark Chrome                         | 13 415 979-19 |
|    | Light Gold                          | 13 415 979-26 |
|    | Brushed Light Gold                  | 13 415 979-27 |
|    | Brushed Durabrass<br>(23kt Gold)    | 13 415 979-28 |
|    | Matte Black                         | 13 415 979-33 |
|   | Brushed<br>Champagne (22kt<br>Gold) | 13 415 979-46 |
|  | Champagne (22kt<br>Gold)            | 13 415 979-47 |
|  | Brushed Chrome                      | 13 415 979-93 |
|  | Brushed Dark<br>Platinum            | 13 415 979-99 |

Recommended miscellaneous

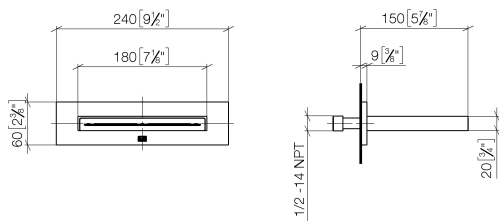
|   |  |               |
|---|--|---------------|
|  | <b>Concealed wall elbow -</b><br>•min. recess depth 90 mm<br>•max. recess depth 163 mm | 35 085 970 90 |
|---|--|---------------|

Recommended miscellaneous

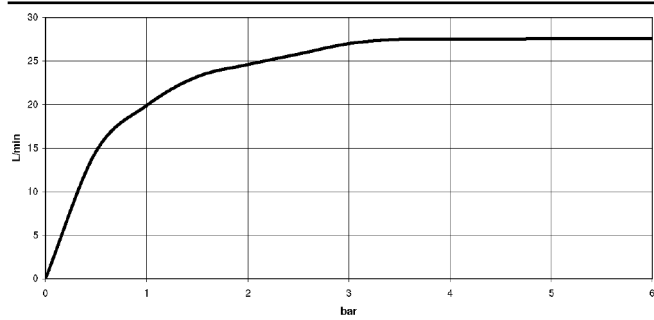
|   |  |               |
|---|--|---------------|
|  | <b>Concealed wall elbow -</b><br>•min. recess depth 90 mm<br>•max. recess depth 163 mm | 35 085 970 90 |
|---|--|---------------|

13 415 979 Product version from 10/1/2023

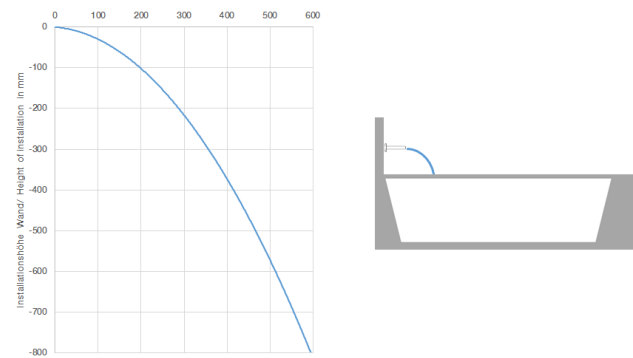
mm [inches]



**Flow rate chart**



**Trajectory diagram**



**Codes & Standards**

|                |      |                           |                                |
|----------------|------|---------------------------|--------------------------------|
| ASME A112.18.1 | cUPC | Scottish Water<br>Byelaws | UK Water Supply<br>Regulations |
|----------------|------|---------------------------|--------------------------------|



## WATER SHEET Cascade spout for wall mounting - Brushed Bronze

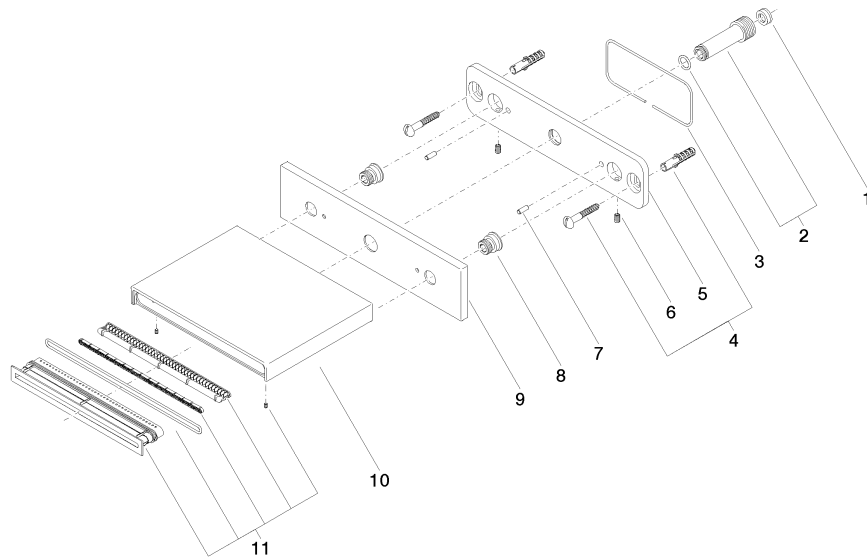
SERIES-VARIOUS

13 415 979 Product version from 10/1/2023

Certificates and sustainability

WRAS\_2306

IAPMO\_4976



## Spare parts list

| No. | Item Number           | Name         | Quantity used | Delivery time |
|-----|-----------------------|--------------|---------------|---------------|
|     | 4 04 30 31 024 01 90  | fixing set   | 1.00          | 2             |
|     | 5 09 17 97 059 90     | holder       | 1.00          | 2             |
|     | 8 09 24 03 214 90     | nipple       | 2.00          | 2             |
|     | 3 09 14 03 134 90     | seal         | 1.00          | 2             |
|     | 2 90 24 03 213 00 90  | connection   | 1.00          | 2             |
|     | 10 09 11 78 003 20-42 | spout        | 1.00          | 60            |
|     | 7 09 31 11 040 90     | pin          | 2.00          | 2             |
|     | 11 90 29 03 059 00 90 | insert       | 1.00          | 2             |
|     | 6 09 31 11 036 90     | pin          | 2.00          | 2             |
|     | 1 09 23 01 057 90     | flow reducer | 1.00          | 2             |
|     | 9 09 27 78 031-42     | rosette      | 1.00          | 60            |