

## Bath cascade spout for wall mounting - Brushed Platinum

SERIES SPECIFIC

13 430 740 Product version from 9/1/2025



- 200mm projection
- cascade
- plate 180 mm x 60 mm
- hole diameter 40 mm
- 1/2" connection
- plug-link mounting
- max. flow 26.5 l/min at 3 bar flow pressure
- WRAS

	Brushed Platinum	13 430 740-06
	Chrome	13 430 740-00
	Platinum	13 430 740-08
	Dark Chrome	13 430 740-19
	Brushed Durabronze (23kt Gold)	13 430 740-28
	Matte Black	13 430 740-33
	Brushed Champagne (22kt Gold)	13 430 740-46
	Champagne (22kt Gold)	13 430 740-47
	Brushed Dark Platinum	13 430 740-99

### Recommended miscellaneous



#### Concealed wall elbow -

35 085 970 90

- max. recess depth 163 mm
- min. recess depth 90 mm

13 430 740 Product version from 9/1/2025

mm [inches]



Flow rate chart



Trajectory diagram



## Codes & Standards

ASME A112.18.1      cUPC      DIN 4109      ISO 3822

Scottish Water  
Byelaws

UK Water Supply  
Regulations

Ü-Zeichen



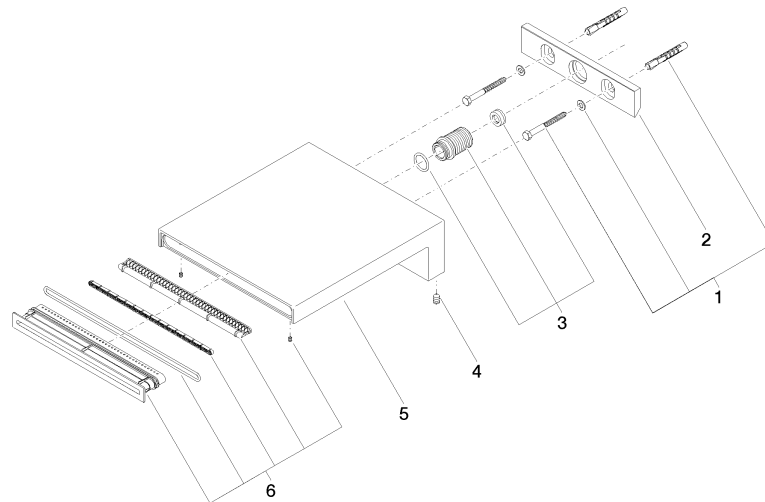
Bath cascade spout for wall mounting - Brushed Platinum

SERIES SPECIFIC

13 430 740 Product version from 9/1/2025

Certificates and sustainability

IAPMO_4976	LGA_19	WRAS_240502
------------	--------	-------------



## Spare parts list

No.	Item Number	Name	Quantity used	Delivery time
1	04 30 31 014 00 90	fixing set	1.00	2
6	90 29 03 059 00 90	insert	1.00	2
2	09 17 97 056 90	holder	1.00	2
3	90 24 05 008 00 90	nipple set	1.00	2
4	09 31 11 144 90	pin	2.00	2
5	09 11 74 042-06	spout	1.00	60