

## VAIA Deck-mounted basin spout without pop-up waste - Platinum


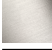






VAIA

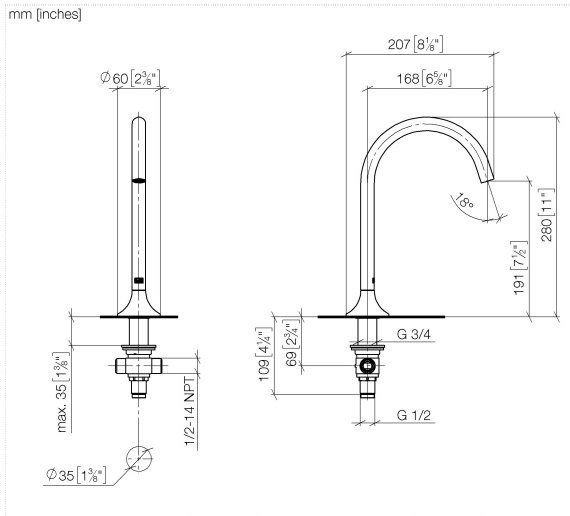
13 716 809 Product version from 3/13/2017 to 5/27/2021



- 168mm projection
- pivotable spout 360°
- circular, air-enriched flow
- height of mixer 280 mm
- height up to aerator 191 mm
- rosette Ø 60 mm
- hole diameter 35 mm
- 2x 1/2" x 1/2" x 400mm high pressure hose
- 1/2" connection
- max. flow 5.7 l/min
- lead-free
- WRAS
- This product can help a building meet the requirements of Green Building Rating Systems, e.g. LEED®, BREEAM®, DGNB

For Touchfree control please order eSet Touchfree with temperature adjustment

	Platinum	13 716 809-08
	Chrome	13 716 809-00
	Brushed Platinum	13 716 809-06
	Dark Chrome	13 716 809-19
	Brushed Durabronze (23kt Gold)	13 716 809-28
	Brushed Dark Brass	13 716 809-39
	Brushed Bronze	13 716 809-42
	Brushed Champagne (22kt Gold)	13 716 809-46
	Champagne (22kt Gold)	13 716 809-47
	Brushed Dark Platinum	13 716 809-99



Flow rate chart



### Codes & Standards

DIN 4109

Executive Order  
no. 1007

ISO 3822

Scottish Water  
Byelaws

UK Water Supply  
Regulations

Ü-Zeichen



## VAIA Deck-mounted basin spout without pop-up waste - Platinum

---

VAIA

13 716 809 Product version from 3/13/2017 to 5/27/2021

### Certificates and sustainability

---

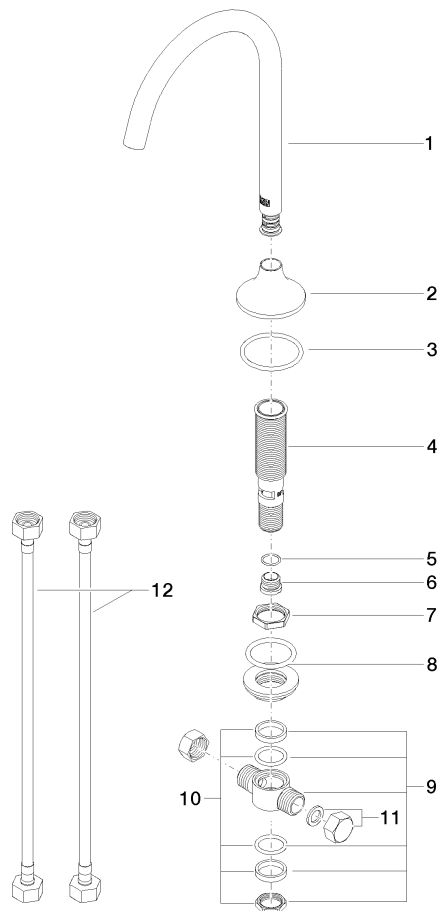
WRAS\_2306

LGA\_29

GDV\_0400

13 716 809 Product version from 3/13/2017 to 5/27/2021

Parts for other  
finishes can be found  
here: [Chrome](#)



## Spare parts list

No.	Item Number	Name	Quantity used	Delivery time
10	90 23 10 012 00 90	gasket kit	1.00	2
1	90 28 22 309 00-08	spout	1.00	40
7	09 23 10 127 90	nut	1.00	2
2	09 27 80 011-08	rosette	1.00	40
11	04 21 02 006 00 92	cap	2.00	2
4	90 30 01 033 00 90	base	1.00	2
3	09 14 10 084 90	seal	1.00	2
6	09 24 04 021 10 90	nipple	1.00	2
8	04 23 10 004 04 90	fixing set	1.00	2
12	04 30 04 096 00 90	hose	2.00	2
5	09 14 10 017 90	seal	1.00	2
9	90 17 11 020 10 90	distributor	1.00	2