







CL.1 Wall-mounted basin spout without pop-up waste - Chrome

CL.1

13 800 705 Product version from 3/9/2015



- 200mm projection
- fixed spout
- rectangular spray pattern with 40 individual jets
- hole diameter 37 mm
- lead-free
- 1/2" connection
- plug-link mounting
- max. flow 4.5 l/min
- This product can help a building meet the requirements of Green Building Rating Systems, e.g. LEED®, BREEAM®, DGNB
- WRAS

| | | |
|---|-------------------------------|---------------|
|  | Chrome | 13 800 705-00 |
|  | Brushed Platinum | 13 800 705-06 |
|  | Dark Chrome | 13 800 705-19 |
|  | Brushed Champagne (22kt Gold) | 13 800 705-46 |
|  | Champagne (22kt Gold) | 13 800 705-47 |
|  | Brushed Dark Platinum | 13 800 705-99 |

Recommended miscellaneous



- Concealed wall elbow -** 35 085 970 90
- max. recess depth 163 mm
 - min. recess depth 90 mm

CL.1 Wall-mounted basin spout without pop-up waste - Chrome

CL.1

13 800 705 Product version from 3/9/2015

mm [inches]



Flow rate chart



Codes & Standards

| | | | |
|-----------------------------|-----------|------------|--|
| ASME A112.18.1 | cUPC | DIN 4109 | EPA WaterSense |
| ISO 3822 | NSF372 | NSF61 | Scottish Water Byelaws |
| UK Water Supply Regulations | Ü-Zeichen | WaterSense |  |



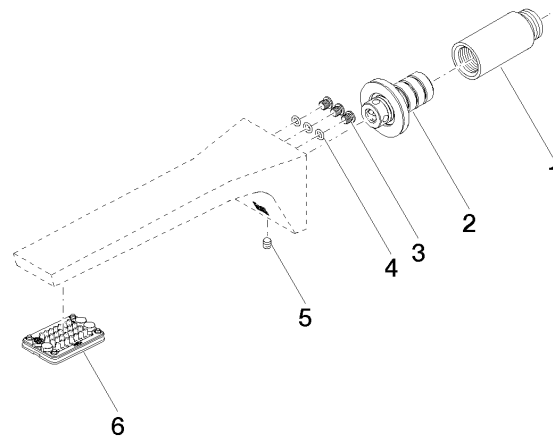
CL.1 Wall-mounted basin spout without pop-up waste - Chrome

CL.1

13 800 705 Product version from 3/9/2015

Certificates and sustainability

| | | | | |
|---------|-----------|------------|------------|-----------|
| LGA_28 | IAPMO_N-4 | IAPMO_4976 | IAPMO_8834 | WRAS_1512 |
| IAPMO_6 | | | | |



Spare parts list

| No. | Item Number | Name | Quantity used | Delivery time |
|-----|--------------------|------------|---------------|---------------|
| 2 | 90 24 03 108 01 90 | nipple set | 1.00 | 2 |
| 3 | 09 30 30 113 20 90 | screw | 3.00 | 2 |
| 4 | 09 14 10 001 90 | seal | 3.00 | 2 |
| 6 | 90 11 02 297 00 90 | aerator | 1.00 | 2 |
| 1 | 09 24 03 081 10 90 | extension | 1.00 | 2 |
| 5 | 90 31 11 004 00 90 | pin | 1.00 | 2 |