

VAIA HOT & COLD WATER DISPENSER - Durabronss (23kt Gold)

VAIA

17 871 809 Product version from 3/1/2025



- 150mm projection
- pivotable spout 360°
- laminar flow
- height of mixer 290 mm
- height up to laminar flow regulator 208 mm
- hole diameter 35 mm
- provides filtered, hot water up to 93°C
- Provides filtered water
- max. flow 3.8 l/min at 3 bar flow pressure
- mechanical valve
- lead-free
- lever

• This product can help a building meet the requirements of Green Building Rating Systems, e.g. LEED®, BREEAM®, DGNB

A minimum flow pressure of 3 bar is necessary for the HOT & COLD WATER DISPENSER to work perfectly in conjunction with a hot water tank and filter.

The installation must be above a kitchen sink.

The filter cartridge must be changed every six months. The installation instructions contain further information for guidance.

Detailed planning information and technical data can be found at

www.dornbracht.com/professional

Not compatible with reverse osmosis filtration

A minimum flow pressure of 3 bar is necessary for the HOT & COLD WATER DISPENSER to work perfectly in conjunction with a hot water tank and filter.

The installation must be above a kitchen sink.

The filter cartridge must be changed every six months. The installation instructions contain further information for guidance.

Detailed planning information and technical data can be found at www.dornbracht.com/professional

Not compatible with reverse osmosis filtration

| | | |
|--|--------------------------------|---------------|
| | Durabronss (23kt Gold) | 17 871 809-09 |
| | Chrome | 17 871 809-00 |
| | Brushed Platinum | 17 871 809-06 |
| | Platinum | 17 871 809-08 |
| | Dark Chrome | 17 871 809-19 |
| | Brushed Durabronss (23kt Gold) | 17 871 809-28 |
| | Matte Black | 17 871 809-33 |
| | Brushed Bronze | 17 871 809-42 |
| | Brushed Champagne (22kt Gold) | 17 871 809-46 |
| | Champagne (22kt Gold) | 17 871 809-47 |
| | Brushed Chrome | 17 871 809-93 |
| | Brushed Dark Platinum | 17 871 809-99 |

Required miscellaneous



Hot water tank incl. filter -

12 893 970 90

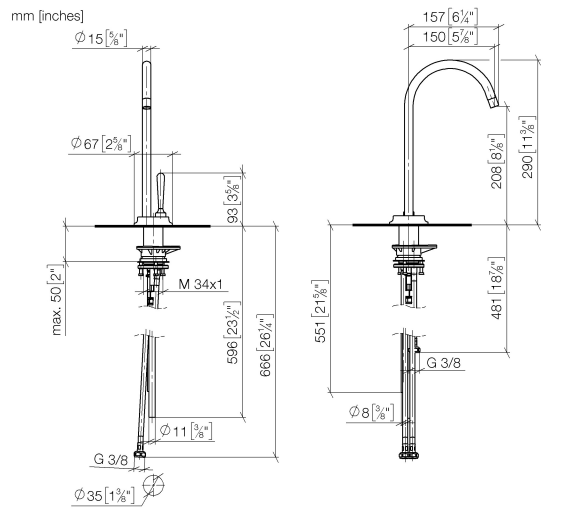
Required miscellaneous

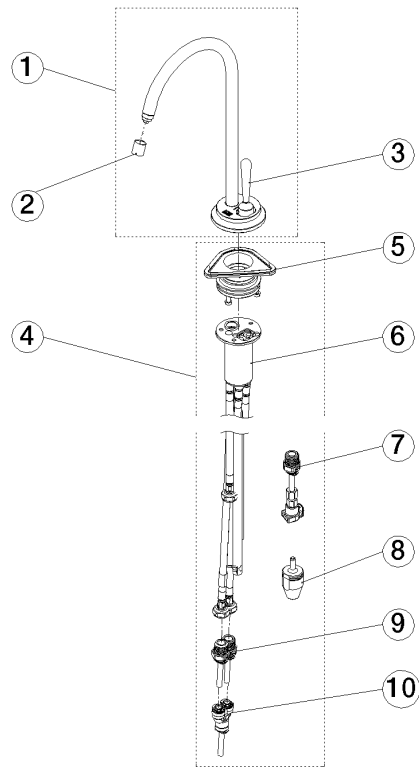


Hose set

12 530 970 90

17 871 809 Product version from 3/1/2025





Spare parts list

| No. | Item Number | Name | Quantity used | Delivery time |
|-----|--------------------|-------|---------------|---------------|
| 1 | 90 17 87 180 90-09 | spout | 1.00 | 40 |
| 2 | 90 17 87 179 01 90 | set | 1.00 | 2 |