


TARA Deck valve clockwise closing - Brushed Platinum

TARA

20 000 882

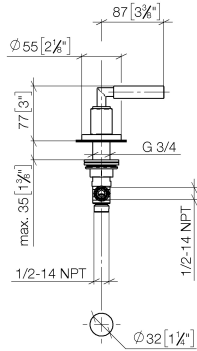


- hole diameter 32 mm
- rosette Ø 55 mm
- WRAS 2112061

	Brushed Platinum	20 000 882-06
	Brushed Bronze	20 000 882-42
	Brushed Champagne (22kt Gold)	20 000 882-46
	Champagne (22kt Gold)	20 000 882-47

20 000 882

mm [inches]



Flow rate chart



Codes & Standards

ASME A112.18.1

cUPC

Scottish Water  
Byelaws

UK Water Supply  
Regulations



## TARA Deck valve clockwise closing - Brushed Platinum

---

TARA

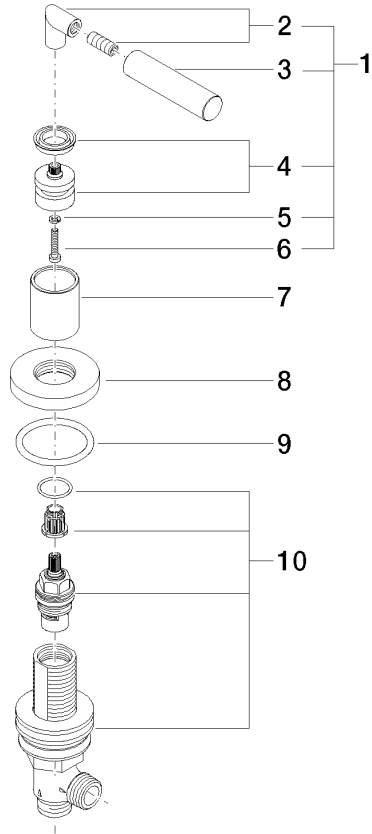
20 000 882

### Certificates

---

IAPMO\_4976

WRAS\_2112





# TARA Deck valve clockwise closing - Brushed Platinum

TARA

20 000 882

## Spare parts list

No.	Item Number	Name	Quantity used	Delivery time
	04 20 88 052 00-06	handle	10	10