

VAIA Single-lever bath mixer with stand pipe for free-standing assembly with hand shower set - Brushed Platinum

VAIA

25 863 809



- spout: circular, air-enriched flow
- max. flow 24.6 l/min at 3 bar flow pressure
- Hand shower: COMPACT RAIN, max. flow rate 6.8 l/min (at 3 bar)
- bar-type hand shower with anti-scale system
- 286mm projection
- pivotable spout 360°
- automatic bath/shower diverter
- total height 1057 - 1127 mm
- wall bracket
- stand pipe height 565 - 635 mm
- height up to aerator 925 – 995 mm
- slide-on rosettes Ø 135 mm
- metal shower hose 1250mm with integrated anti-twist protection
- WRAS

Intrinsic protection against back flow.

Intrinsic protection against back flow.

| | | |
|---|--------------------------------|---------------|
|  | Brushed Platinum | 25 863 809-06 |
|  | Chrome | 25 863 809-00 |
|  | Platinum | 25 863 809-08 |
|  | Dark Chrome | 25 863 809-19 |
|  | Brushed Durabronze (23kt Gold) | 25 863 809-28 |
|  | Brushed Bronze | 25 863 809-42 |
|  | Brushed Champagne (22kt Gold) | 25 863 809-46 |
|  | Champagne (22kt Gold) | 25 863 809-47 |
|  | Brushed Dark Platinum | 25 863 809-99 |

Required miscellaneous



Concealed floor mounting -

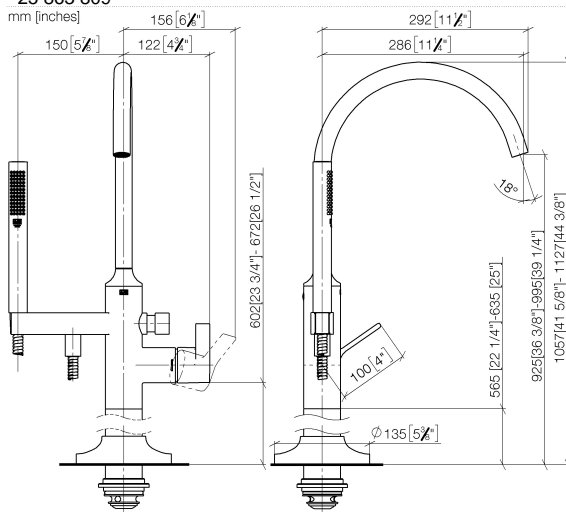
35 945 970 90

- max. recess depth 150 mm
- min. recess depth 80 mm

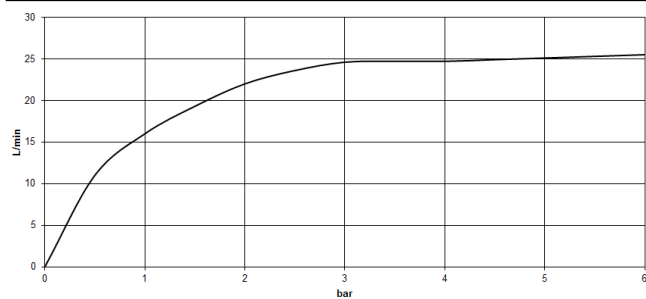
VAIA Single-lever bath mixer with stand pipe for free-standing assembly with hand shower set - Brushed Platinum

VAIA

25 863 809



Flow rate chart



Codes & Standards

| | | | |
|----------------|------------------------|-----------------------------|-----------|
| ASME A112.18.1 | cUPC | DIN 4109 | EN 1717 |
| ISO 3822 | Scottish Water Byelaws | UK Water Supply Regulations | Ü-Zeichen |



VAIA Single-lever bath mixer with stand pipe for free-standing assembly with hand shower set - Brushed Platinum

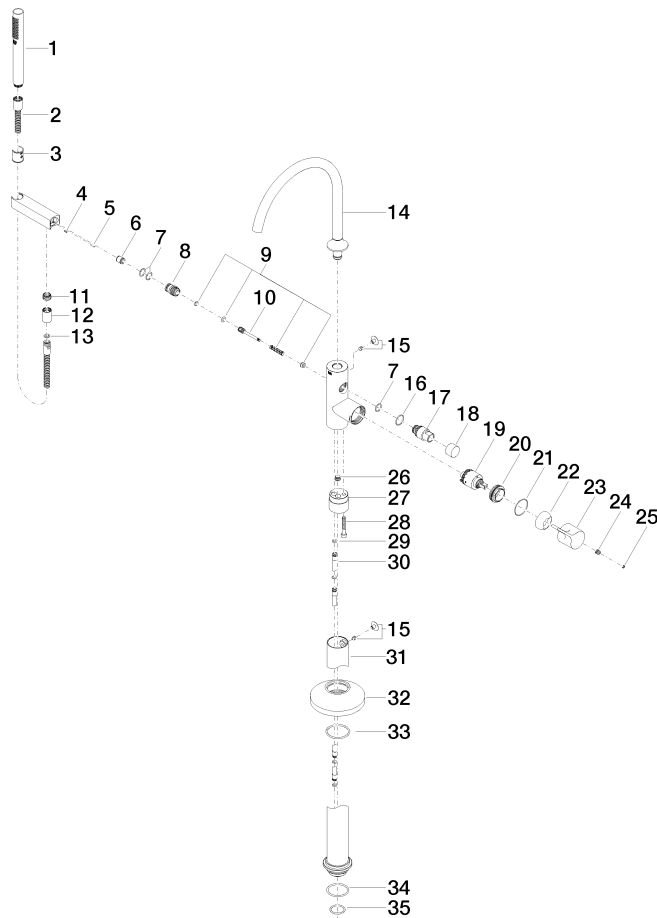
VAIA

| | | | | |
|---------------------------------|----------------|-----------|--------|-------------------|
| 25 863 809 | | | | |
| Certificates and sustainability | | | | |
| IAPMO_4976 | Belgaqua_19_77 | WRAS_2001 | LGA_29 | Belgaqua_24-003-2 |

VAIA Single-lever bath mixer with stand pipe for free-standing assembly with hand shower set - Brushed Platinum

VAIA

25 863 809



VAIA Single-lever bath mixer with stand pipe for free-standing assembly with hand shower set - Brushed Platinum

VAIA

25 863 809

Spare parts list

| No. | Item Number | Name | Quantity used | Delivery time |
|--|--------------------|--|---------------|---------------|
| 31 | 04 28 22 030 00-06 | pipe | 1.00 | 10 |
| 5 | 09 31 11 040 90 | pin | 1.00 | 2 |
| 19 | 90 15 05 039 00 90 | cartridge | 1.00 | 2 |
| 17 | 09 21 34 081 20-06 | nipple | 1.00 | 10 |
| 34 | 09 14 10 084 90 | seal | 1.00 | 2 |
| 25 | 90 31 20 087 00-06 | plug | 1.00 | 10 |
| 23 | 09 20 80 022-06 | handle | 1.00 | 10 |
| 11 | 09 24 03 069 90 | nipple | 1.00 | 2 |
| 8 | 09 24 03 153 20-06 | nipple | 1.00 | 60 |
| 2 | 90 30 02 072 00-06 | Metal shower hose 1/2" x 3/8" x 1250 mm - Brushed Platinum | 1.00 | 10 |
| 9 | 90 16 02 023 00 90 | spring | 1.00 | 2 |
| 27 | 09 24 03 152 20-06 | adaptor | 1.00 | - |
| Spare part can no longer be ordered, please order the replacement item | | | | |
| 14 | 90 28 22 327 00-06 | spout | 1.00 | 10 |
| 30 | 04 28 22 025 00 90 | connection | 2.00 | 2 |
| 10 | 09 31 09 102 20-06 | pull-rod | 1.00 | - |
| Spare part can no longer be ordered, please order the replacement item | | | | |
| 3 | 09 18 40 118 90 | sleeve | 1.00 | 2 |
| 21 | 09 14 10 037 90 | seal | 1.00 | 2 |
| 18 | 09 20 88 002-06 | handle | 1.00 | 10 |
| 35 | 09 14 10 018 90 | seal | 1.00 | 2 |
| 20 | 09 24 04 298 90 | nut | 1.00 | 2 |
| 28 | 09 30 30 111 90 | screw | 1.00 | 2 |
| 29 | 09 14 10 139 90 | seal | 2.00 | 2 |
| 4 | 09 31 11 058 90 | pin | 1.00 | 2 |
| 32 | 09 27 80 022-06 | rosette | 1.00 | 10 |
| 16 | 09 14 10 112 90 | seal | 1.00 | 2 |
| 22 | 09 28 30 036-06 | cover | 1.00 | 10 |
| 15 | 04 31 20 036 00 90 | plug | 2.00 | 2 |
| 6 | 90 23 01 141 00 90 | back-flow preventer | 1.00 | 2 |
| 33 | 90 14 10 129 00 90 | seal | 1.00 | 2 |
| 12 | 90 21 02 069 00-06 | cover | 1.00 | 10 |
| 13 | 90 14 20 026 00 90 | seal | 1.00 | 2 |
| 26 | 04 31 20 039 11 90 | plug | 1.00 | 2 |
| 7 | 90 14 10 010 00 90 | seal | 3.00 | 2 |
| 24 | 90 31 11 030 00 90 | pin | 1.00 | 2 |
| 1 | 90 12 11 140 41-06 | shower | 1.00 | 10 |