

TARA Showerpipe with shower mixer without hand shower FlowReduce 220 mm - Matte Black

TARA

26 632 892 Product version from 4/1/2024



Rain shower:

- rain shower Ø 220 mm
- overhead shower: rain flow
- max. rainshower flow 7 l/min
- Function from: l/min

Control element:

hand shower:

- rotary diverter for fixed-riser shower/hand shower
- 1500 mm metal shower hose

Technical data:

- shower with fixed riser projection 420mm
- height of fittings up to rain shower (bottom edge) 1007mm
- height of fittings up to top edge of elbow 1167mm
- rosette for wall mounting Ø 57mm
- rosette for shower mixer Ø 65mm
- rosette for shower holder Ø 55mm
- Pipe diameter 20 mm
- gauge 150 mm - 13 mm
- 1/2" connection

Notes:

- This product can help a building meet the requirements of Green Building Rating Systems, e.g. LEED®, BREEAM®, DGNB

This article does not include a hand shower!

Intrinsic protection against back flow.

	Matte Black	26 632 892-33
	Chrome	26 632 892-00
	Brushed Platinum	26 632 892-06
	Platinum	26 632 892-08
	Dark Chrome	26 632 892-19
	Brushed Durabrass (23kt Gold)	26 632 892-28
	Brushed Dark Brass	26 632 892-39
	Brushed Bronze	26 632 892-42
	Brushed Champagne (22kt Gold)	26 632 892-46
	Champagne (22kt Gold)	26 632 892-47
	Brushed Chrome	26 632 892-93
	Brushed Dark Platinum	26 632 892-99

TARA Showerpipe with shower mixer without hand shower FlowReduce 220 mm - Matte Black


TARA

26 632 892 Product version from 4/1/2024

Required miscellaneous

	Hand shower - Matte Black	28 017 979-33
---	----------------------------------	---------------


Required miscellaneous

	Hand shower FlowReduce - Matte Black	28 012 979-33 0010
---	---	--------------------

Required miscellaneous

	Hand shower - Matte Black	28 012 979-33
---	----------------------------------	---------------

Required miscellaneous

	Hand shower FlowReduce - Matte Black	28 016 979-33 0010
---	---	--------------------

Required miscellaneous

	SERIES-VARIOUS Hand shower FlowReduce - Matte Black	28 027 979-33 0010
---	--	--------------------

Required miscellaneous

	SERIES-VARIOUS Hand shower FlowReduce - Matte Black	28 029 979-33 0010
---	--	--------------------

Required miscellaneous

	Hand shower - Matte Black	28 016 979-33
---	----------------------------------	---------------


Required miscellaneous

	Hand shower - Matte Black	28 018 979-33
---	----------------------------------	---------------

Required miscellaneous

	Hand shower - Matte Black	28 015 979-33
---	----------------------------------	---------------

Required miscellaneous

	Hand shower FlowReduce - Matte Black	28 018 979-33 0010
---	---	--------------------

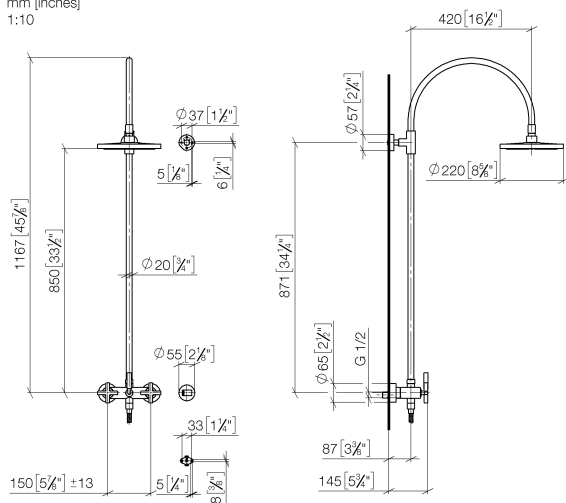
Required miscellaneous

	SERIES-VARIOUS Hand shower FlowReduce - Matte Black	28 025 979-33 0010
---	--	--------------------

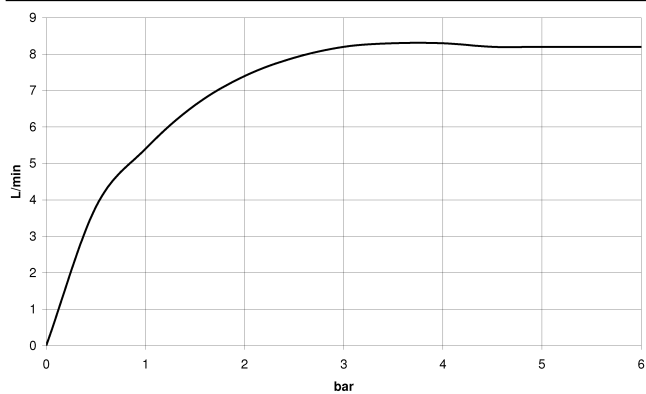
TARA Showerpipe with shower mixer without hand shower FlowReduce 220 mm - Matte Black

TARA

26 632 892 Product version from 4/1/2024
mm [inches]
1:10



Flow rate chart



Codes & Standards

DIN 4109

EN 1717

ISO 3822

Scottish Water
Byelaws

UK Water Supply
Regulations

Ü-Zeichen



TARA Showerpipe with shower mixer without hand shower FlowReduce 220 mm - Matte Black

TARA

26 632 892 Product version from 4/1/2024

Certificates and sustainability

Belgaqua_21-023-2 WRAS_2204

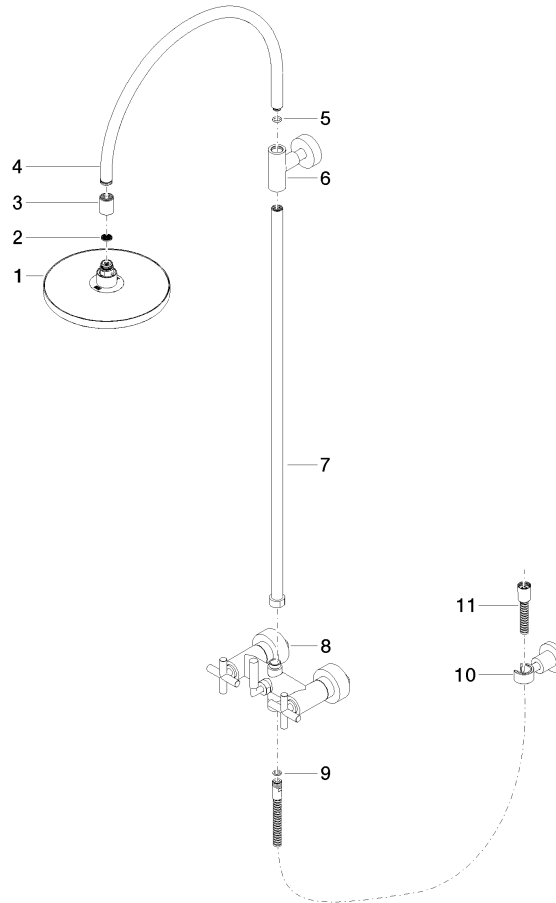
LGA_38

TARA Showerpipe with shower mixer without hand shower FlowReduce 220 mm - Matte Black

TARA

26 632 892 Product version from 4/1/2024

Parts for other
finishes can be found
here: [Chrome](#)



Spare parts list

No.	Item Number	Name	Quantity used	Delivery time
	2 09 23 01 039 90	sieve	1.00	2
	3 09 24 03 177 20-33	adaptor	1.00	30
	8 04 17 10 020 01-33	fitting	1.00	30
	10 28 050 892-33	TARA Wall bracket - Matte Black	1.00	10
	6 90 17 11 037 00-33	holder	1.00	-
Spare part can no longer be ordered, please order the replacement item				
	4 04 28 22 097 20-33	spout	1.00	30
	7 90 28 22 096 00-33	pipe	1.00	30
	11 28 304 970-33	Metal shower hose 1/2" x 3/8" x 1500 mm - Matte Black	1.00	30
	1 90 12 05 092 20-33	shower	1.00	30
	9 90 14 20 026 00 90	seal	1.00	2
	5 90 14 10 011 00 90	seal	1.00	2