

VAIA Hand shower set for bath rim or tile edge installation - Brushed Bronze

27 702 809 Product version from 3/13/2017 to 5/15/2020



- COMPACT RAIN, max. flow rate 6.8 l/min (at 3 bar)
- with anti-scale system
- rosette Ø 60 mm
- hole diameter 32 mm
- metal shower hose 1750mm with integrated anti-twist protection
- WRAS

Intrinsic protection against back flow.

| | | |
|---|--------------------------------|---------------|
|  | Brushed Bronze | 27 702 809-42 |
|  | Chrome | 27 702 809-00 |
|  | Brushed Platinum | 27 702 809-06 |
|  | Platinum | 27 702 809-08 |
|  | Dark Chrome | 27 702 809-19 |
|  | Brushed Durabronze (23kt Gold) | 27 702 809-28 |
|  | Brushed Champagne (22kt Gold) | 27 702 809-46 |
|  | Champagne (22kt Gold) | 27 702 809-47 |
|  | Brushed Dark Platinum | 27 702 809-99 |



VAIA Hand shower set for bath rim or tile edge installation - Brushed Bronze

27 702 809 Product version from 3/13/2017 to 5/15/2020

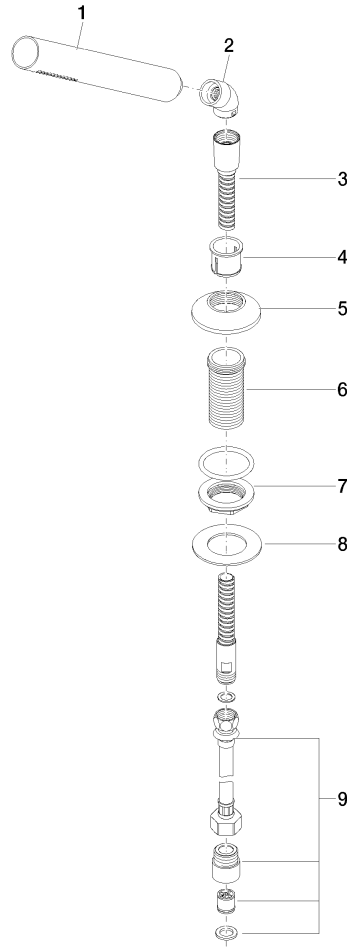
Certificates

Belgaqua_22_282_2 IAPMO_4976 WRAS_2209

VAIA Hand shower set for bath rim or tile edge installation - Brushed Bronze

27 702 809 Product version from 3/13/2017 to 5/15/2020

Parts for other finishes can be found here: [Chrome](#)



Spare parts list

| No. | Item Number | Name | Quantity used | Delivery time |
|-----|--------------------|--|---------------|---------------|
| 1 | 90 12 11 140 41-42 | shower | 1 | 30 |
| 2 | 90 24 04 019 00-42 | angle | 1 | 30 |
| 3 | 28 322 970-42 | Metal shower hose 1/2" x 3/8" x 1750 mm - Brushed Bronze | 1 | 30 |
| 4 | 90 18 40 085 00 90 | sleeve | 1 | 2 |
| 5 | 09 27 80 016-42 | rosette | 1 | 60 |
| 6 | 09 30 01 090-07 | sleeve | 1 | 30 |
| 7 | 04 23 10 032 46 90 | fixing set | 1 | 2 |
| 8 | 09 30 11 060 90 | disc | 1 | 2 |
| 9 | 12 505 970 90 | High pressure hose 1/2" x 3/8" x 500 mm - | 1 | 2 |