

**MADISON Metal hand shower with porcelain insert (white) FlowReduce - Durabrand (23kt Gold)**

MADISON

28 002 970



- COMPACT RAIN, max. flow rate 6.8 l/min (at 3 bar)
- spray head Ø 64mm
- 1/2" connection
- This product can help a building meet the requirements of Green Building Rating Systems, e.g. LEED®, BREEAM®, DGNB

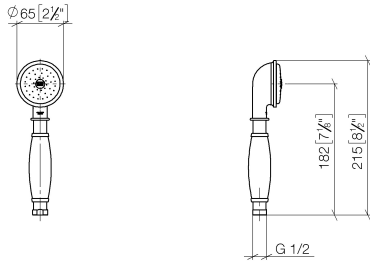
Intrinsic protection against back flow.

|   |                               |                    |
|---|-------------------------------|--------------------|
|    | Durabrand (23kt Gold)         | 28 002 970-09 0010 |
|    | Chrome                        | 28 002 970-00      |
|    | Chrome                        | 28 002 970-00 0010 |
|    | Gold (23.9kt)                 | 28 002 970-01      |
|    | Brushed Platinum              | 28 002 970-06      |
|    | Brushed Platinum              | 28 002 970-06 0010 |
|    | Platinum                      | 28 002 970-08      |
|    | Platinum                      | 28 002 970-08 0010 |
|    | Durabrand (23kt Gold)         | 28 002 970-09      |
|  | Brushed Durabrand (23kt Gold) | 28 002 970-28      |
|  | Brushed Durabrand (23kt Gold) | 28 002 970-28 0010 |
|  | Brushed Chrome                | 28 002 970-93      |
|  | Brushed Chrome                | 28 002 970-93 0010 |
|  | Brushed Dark Platinum         | 28 002 970-99      |
|  | Brushed Dark Platinum         | 28 002 970-99 0010 |

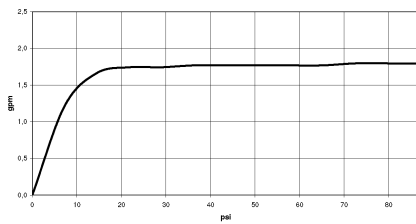
**MADISON Metal hand shower with porcelain insert (white) FlowReduce -  
Durabronz (23kt Gold)**

MADISON

28 002 970  
mm [inches]



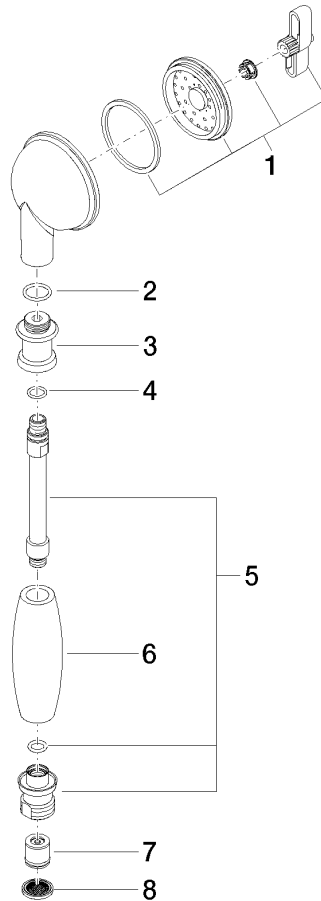
**Flow rate chart**



**Certificates**

IAPMO\_11777. IAPMO\_4976 (2). LGA\_8492.

28 002 970  
Parts for other  
finishes can be found  
here: [Chrome](#)



### Spare parts list

| No.  | Item Number        | Name         | Quantity used | Delivery time |
|--|--------------------|--------------|---------------|---------------|
| 1  | 90 12 01 010 00 90 | set          | 1             | 2             |
| 2  | 09 14 10 069 90    | seal         | 1             | 2             |
| 3  | 09 24 04 059 20-09 | nipple       | 1             | 40            |
| 4  | 09 14 10 042 90    | seal         | 1             | 2             |
| 5  | 90 28 22 033 00-09 | insert       | 1             | -             |
| Spare part can no longer be ordered, please order the replacement item |                    |              |               |               |
| 6  | 11 167 820 60      | handle       | 1             | 2             |
| 7  | 09 23 01 166 90    | flow reducer | 1             | 2             |
| 8  | 09 23 01 039 90    | sieve        | 1             | 2             |