

Rain shower for recessed ceiling installation with light 300 mm - Chrome

SERIES SPECIFIC

28 034 970 Product version from 5/1/2022



- rain shower Ø 300 mm
- PURE RAIN, max. flow rate 12 l/min (at 3 bar)
- PURIFY RAIN, max. flow rate 6 l/min (at 3 bar)
- min. recess depth 137 mm
- with anti-scale system

Ceiling module power supply

- 12V DC (CV)

Spot lighting

- LED coloured light RGBW
- Bulbs protected against splashing water

Ambient lighting

- LED coloured light RGBW
- Bulbs protected against splashing water

Activation

- ZigBee Light Link RGBW controller
- Provided by customer: Zigbee gateway

Environment

- Not suitable for outdoor use.
- Not suitable for use in a steam room.
- Not suitable for use in chlorinated or salty environments.
- Comply with the protection zone regulations as defined in DIN VDE 0100, Part 701 (IEC 60364-7-701).
- Dornbracht recommends consulting a systems integrator.
- WRAS

	Chrome	28 034 970-00
	Brushed Platinum	28 034 970-06
	Platinum	28 034 970-08
	Dark Chrome	28 034 970-19
	Light Gold	28 034 970-26
	Brushed Light Gold	28 034 970-27
	Brushed Durabronze (23kt Gold)	28 034 970-28
	Matte Black	28 034 970-33
	Brushed Bronze	28 034 970-42
	Brushed Champagne (22kt Gold)	28 034 970-46
	Champagne (22kt Gold)	28 034 970-47
	Brushed Chrome	28 034 970-93
	Brushed Dark Platinum	28 034 970-99

Required miscellaneous

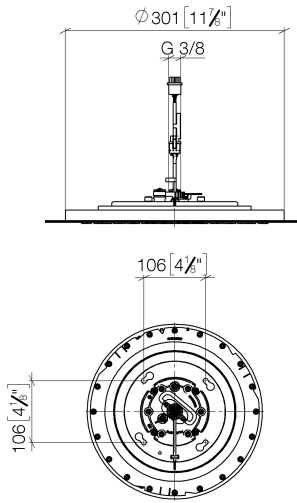


Concealed ceiling installation box for recessed ceiling installation with light -

- flush-mounted reflection box Ø 360 mm RAL 9003 signal white
- recess depth 137mm
- 2x female thread 1/2" outlet
- concealed rough parts
- Input 100-240V AC 50-60Hz
- Output 12V DC SELV / Class 2
- ZigBee Light Link RGBW controller

28 034 970 Product version from 5/1/2022

mm [inches]



Flow rate chart



Codes & Standards

DIN 4109

ISO 3822

Scottish Water
Byelaws

UK Water Supply
Regulations

Ü-Zeichen



Rain shower for recessed ceiling installation with light 300 mm - Chrome

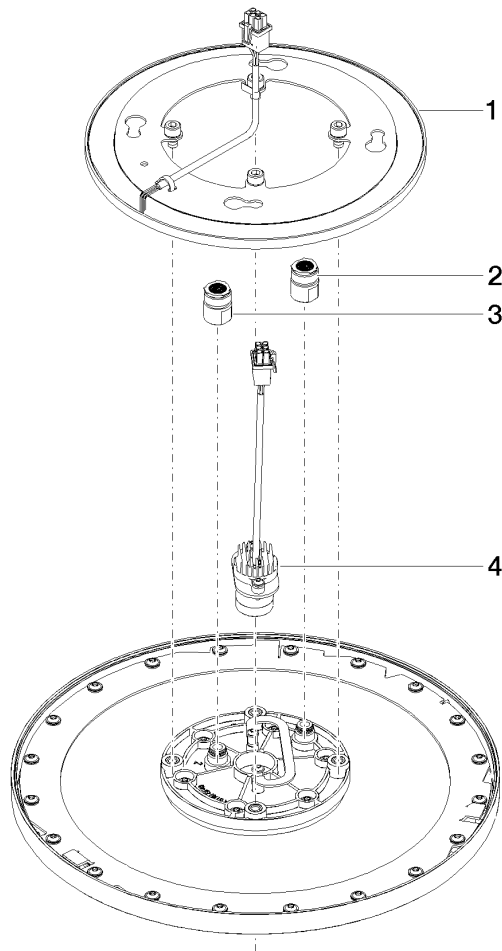
SERIES SPECIFIC

28 034 970 Product version from 5/1/2022

Certificates and sustainability

LGA_38

WRAS_240502



Spare parts list

No.	Item Number	Name	Quantity used	Delivery time
4	90 10 01 225 00 90	electronic accessories	1.00	2
2	90 24 03 309 01 90	connection	1.00	2
3	90 24 03 309 00 90	connection	1.00	2
1	90 10 01 221 00 90	electronic accessories	1.00	2