

**Body spray without volume control FlowReduce - Brushed Durabronze (23kt Gold)**

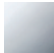


TARA

28 518 979



- spray head Ø 55mm
- ball-joint pivotable through 25° (in any direction)
- HORIZONTAL RAIN, max. flow rate 5 l/min (at 3 bar)
- with anti-scale system
- rosette Ø 55 mm
- 1/2" connection
- This product can help a building meet the requirements of Green Building Rating Systems, e.g. LEED®, BREEAM®, DGNB

Fits: TARA, LISSÉ, VAIA, META

|   |                                |               |
|---|--------------------------------|---------------|
|    | Brushed Durabronze (23kt Gold) | 28 518 979-28 |
|    | Chrome                         | 28 518 979-00 |
|    | Brushed Platinum               | 28 518 979-06 |
|    | Platinum                       | 28 518 979-08 |
|    | Durabronze (23kt Gold)         | 28 518 979-09 |
|    | Dark Chrome                    | 28 518 979-19 |
|    | Light Gold                     | 28 518 979-26 |
|    | Brushed Light Gold             | 28 518 979-27 |
|    | Matte Black                    | 28 518 979-33 |
|   | Brushed Bronze                 | 28 518 979-42 |
|  | Brushed Champagne (22kt Gold)  | 28 518 979-46 |
|  | Champagne (22kt Gold)          | 28 518 979-47 |
|  | Brushed Chrome                 | 28 518 979-93 |
|  | Brushed Dark Platinum          | 28 518 979-99 |

**Recommended miscellaneous**

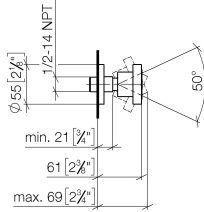


**Concealed wall elbow -**

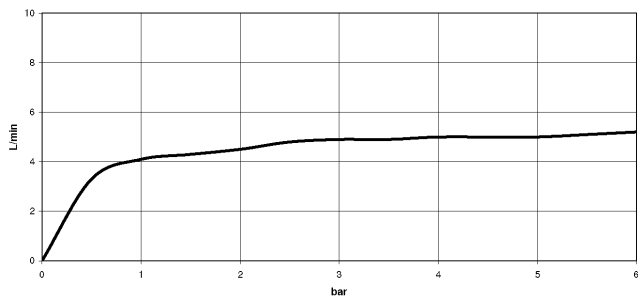
- max. recess depth 163 mm
- min. recess depth 90 mm

35 085 970 90

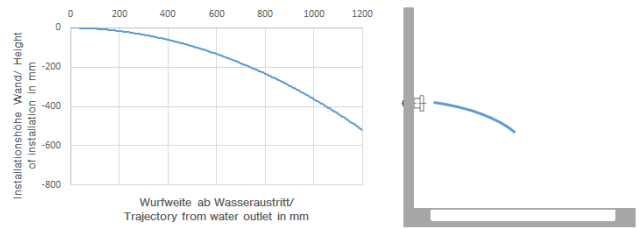
28 518 979  
mm [inches]



Flow rate chart



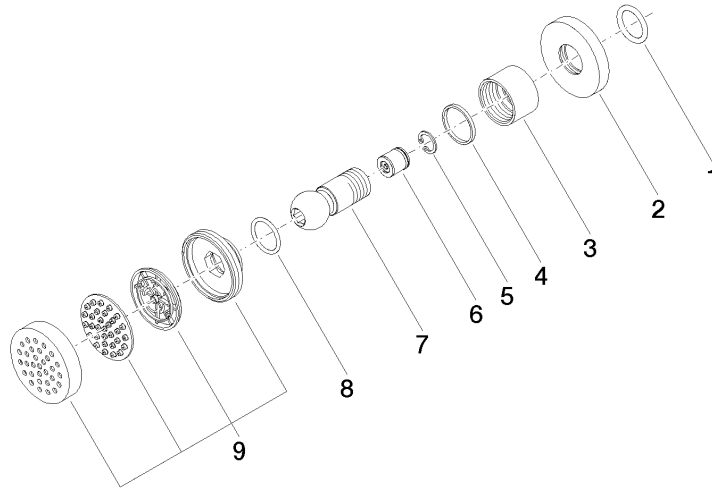
Trajectory diagram



Certificates

LGA\_38651.

28 518 979



### Spare parts list

| No. | Item Number        | Name                  | Quantity used | Delivery time |
|-----|--------------------|-----------------------|---------------|---------------|
| 1   | 90 14 10 026 00 90 | seal                  | 1             | 2             |
| 2   | 09 27 22 019-28    | rosette               | 1             | 20            |
| 3   | 09 23 30 026-28    | nut                   | 1             | 20            |
| 4   | 09 14 15 010 90    | ring                  | 1             | 2             |
| 5   | 09 16 01 014 90    | ring                  | 1             | 2             |
| 6   | 09 23 01 048 90    | back-flow preventer   | 1             | 2             |
| 7   | 09 21 40 016-28    | connection            | 1             | 20            |
| 8   | 09 14 10 015 90    | seal                  | 1             | 2             |
| 9   | 90 12 05 027 00-28 | casing ( completely ) | 1             | 20            |