







28 528 360



- spray head Ø 55mm
- ball-joint pivotable through 25° (in any direction)
- HORIZONTAL RAIN, max. flow rate 7 l/min (at 3 bar)
- rosette Ø 55 mm
- 1/2" connection

| | | |
|---|------------------------------|---------------|
|  | Brushed Dark Platinum | 28 528 360-99 |
|  | Chrome | 28 528 360-00 |
|  | Brushed Platinum | 28 528 360-06 |
|  | Platinum | 28 528 360-08 |
|  | Durabass (23kt Gold) | 28 528 360-09 |
|  | Brushed Durabass (23kt Gold) | 28 528 360-28 |

Recommended miscellaneous

Concealed wall elbow - 35 085 970 90



- max. recess depth 163 mm
- min. recess depth 90 mm

28 528 360

mm [inches]



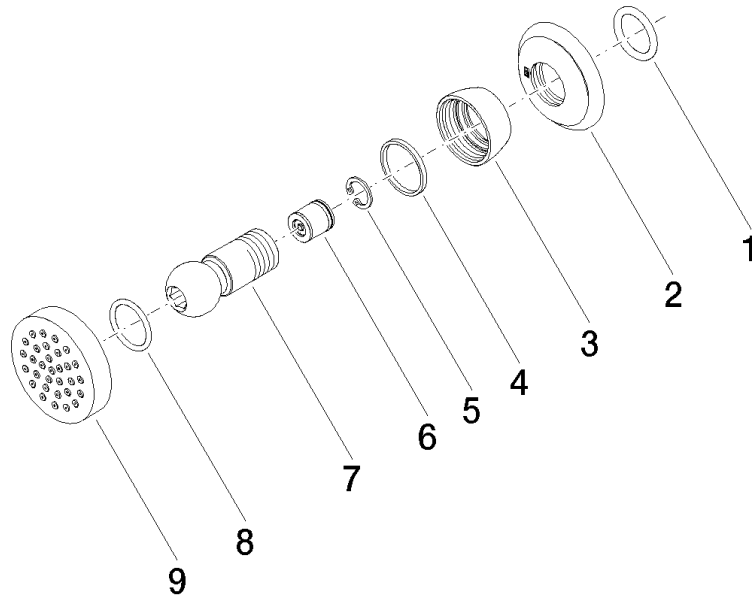
Flow rate chart



Certificates

LGA_38652.

28 528 360



Spare parts list

| No. | Item Number | Name | Quantity used | Delivery time |
|-----|--------------------|-----------------------|---------------|---------------|
| 1 | 90 14 10 026 00 90 | seal | 1 | 2 |
| 2 | 09 27 35 003-99 | rosette | 1 | 30 |
| 3 | 09 23 30 027-99 | nut | 1 | 30 |
| 4 | 09 14 15 010 90 | ring | 1 | 2 |
| 5 | 09 16 01 014 90 | ring | 1 | 2 |
| 6 | 90 23 01 147 00 90 | back-flow preventer | 1 | 2 |
| 7 | 09 21 40 016-99 | connection | 1 | 30 |
| 8 | 09 14 10 015 90 | seal | 1 | 2 |
| 9 | 90 12 05 027 00-99 | casing (completely) | 1 | 30 |