

Rain shower with wall fixing FlowReduce 220 mm - Dark Chrome

SERIES SPECIFIC

28 648 970    Product version from 4/1/2024



- 450mm projection
- rain shower Ø 220 mm
- PURE RAIN, max. flow rate 7 l/min (at 3 bar)
- Function from: 6 l/min
- rosette Ø 60 mm
- 1/2" connection
- with anti-scale system
- quick clearing
- This product can help a building meet the requirements of Green Building Rating Systems, e.g. LEED®, BREEAM®, DGNB

	Dark Chrome	28 648 970-19
	Chrome	28 648 970-00
	Brushed Platinum	28 648 970-06
	Platinum	28 648 970-08
	Light Gold	28 648 970-26
	Brushed Light Gold	28 648 970-27
	Brushed Durabrass (23kt Gold)	28 648 970-28
	Matte Black	28 648 970-33
	Brushed Bronze	28 648 970-42
	Brushed Champagne (22kt Gold)	28 648 970-46
	Champagne (22kt Gold)	28 648 970-47
	Brushed Chrome	28 648 970-93
	Brushed Dark Platinum	28 648 970-99

28 648 970 Product version from 4/1/2024

mm [inches]



**Codes & Standards**

DIN 4109

ISO 3822

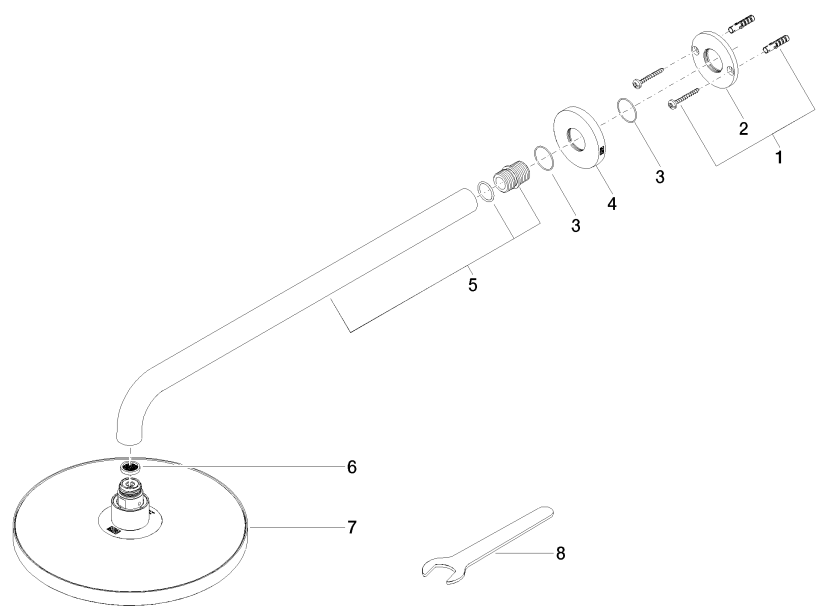
Ü-Zeichen

**Certificates and sustainability**

LGA\_38

28 648 970    Product version from 4/1/2024

Parts for other  
 finishes can be found  
 here: [Chrome](#)



Spare parts list

No.	Item Number	Name	Quantity used	Delivery time
	7 90 12 05 092 20-19	shower	1.00	20
	3 09 14 10 150 90	seal	2.00	2
	8 90 30 09 069 00 90	key	1.00	2
	6 09 23 01 075 90	insert	1.00	2
	2 09 17 20 120 90	holder	1.00	2
	4 09 27 97 015-19	rosette	1.00	20
	1 04 30 31 032 00 90	fixing set	1.00	2
	5 90 11 03 070 00-19	pipe	1.00	20