

META Two-way diverter for bath rim or tile edge installation - Brushed Dark Brass

## META

29 140 660 Product version from 7/1/2023



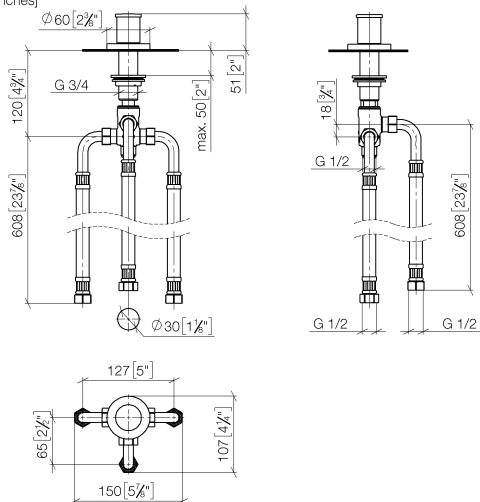
- automatic bath/shower diverter
- hole diameter 32 mm
- rosette Ø 60 mm
- 1/2" connection
- max. flow 64.9 l/min at 3 bar flow pressure
- WRAS

	Brushed Dark Brass	29 140 660-39
	Chrome	29 140 660-00
	Brushed Platinum	29 140 660-06
	Dark Chrome	29 140 660-19
	Light Gold	29 140 660-26
	Brushed Light Gold	29 140 660-27
	Matte Black	29 140 660-33
	Brushed Bronze	29 140 660-42
	Brushed Champagne (22kt Gold)	29 140 660-46
	Champagne (22kt Gold)	29 140 660-47
	Brushed Chrome	29 140 660-93
	Brushed Dark Platinum	29 140 660-99

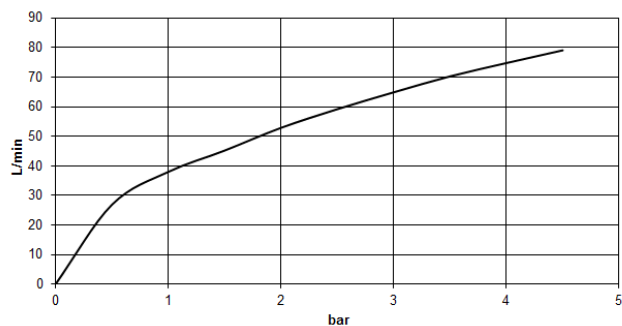
# META Two-way diverter for bath rim or tile edge installation - Brushed Dark Brass

META

29 140 660 Product version from 7/1/2023  
mm [inches]



Flow rate chart



## Codes & Standards

DIN 4109

ISO 3822

Ü-Zeichen



## META Two-way diverter for bath rim or tile edge installation - Brushed Dark Brass

META

---

29 140 660 Product version from 7/1/2023

Certificates and sustainability

---

LGA\_29

