

## VAIA Single-lever basin mixer with pop-up waste - Brushed Champagne (22kt Gold)

VAIA

33 500 809 Product version from 3/13/2017



- 167mm projection
- pivotable spout 360°
- circular, air-enriched flow
- height of mixer 306 mm
- height up to aerator 220 mm
- hole diameter 35 mm
- 2x screw-in M 8 x 1 pressure hose, leak-tested
- max. flow 5.7 l/min
- lead-free
- This product can help a building meet the requirements of Green Building Rating Systems, e.g. LEED®, BREEAM®, DGNB
- WRAS

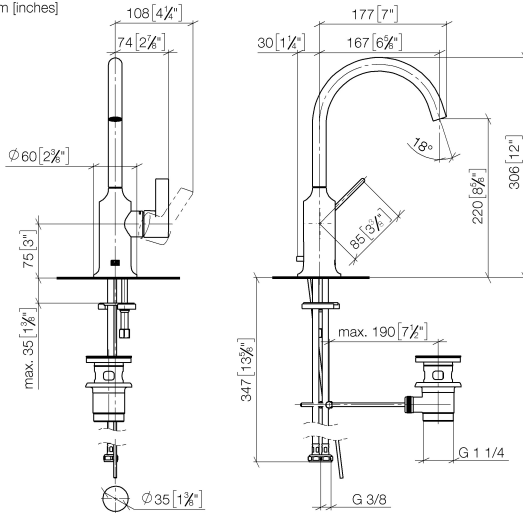
Only suitable for basins with an overflow.

|  |                                |               |
|--|--------------------------------|---------------|
|   | Brushed Champagne (22kt Gold)  | 33 500 809-46 |
|   | Chrome                         | 33 500 809-00 |
|   | Brushed Platinum               | 33 500 809-06 |
|   | Platinum                       | 33 500 809-08 |
|   | Dark Chrome                    | 33 500 809-19 |
|   | Brushed Durabronze (23kt Gold) | 33 500 809-28 |
|   | Brushed Dark Brass             | 33 500 809-39 |
|   | Brushed Bronze                 | 33 500 809-42 |
|   | Champagne (22kt Gold)          | 33 500 809-47 |
|  | Brushed Dark Platinum          | 33 500 809-99 |

# VAIA Single-lever basin mixer with pop-up waste - Brushed Champagne (22kt Gold)

VAIA

33 500 809 Product version from 3/13/2017  
mm [inches]



Flow rate chart



## Codes & Standards

DIN 4109

Executive Order  
no. 1007

ISO 3822

Scottish Water  
Byelaws

UK Water Supply  
Regulations

Ü-Zeichen



VAIA Single-lever basin mixer with pop-up waste - Brushed Champagne (22kt Gold)

VAIA

33 500 809 Product version from 3/13/2017

Certificates and sustainability

LGA\_29

GDV\_0400

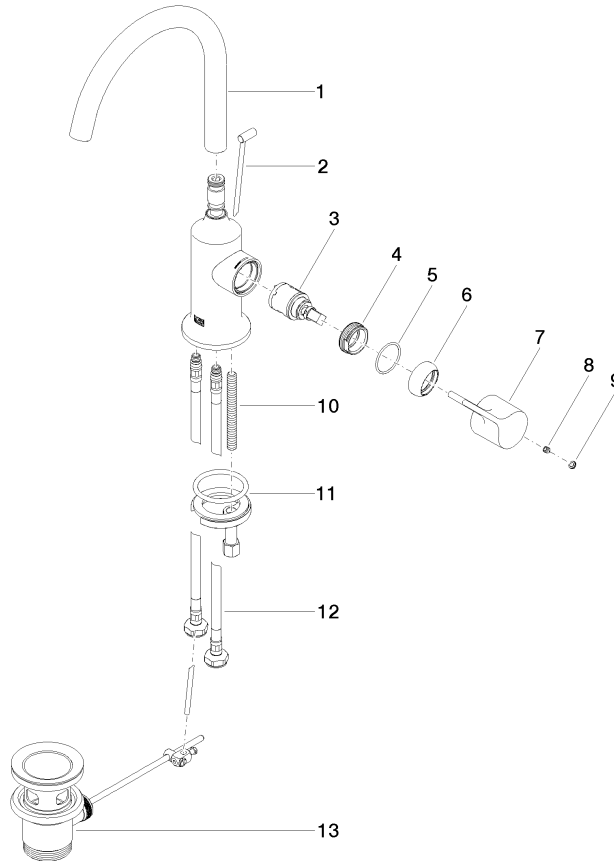
WRAS\_240702

## VAIA Single-lever basin mixer with pop-up waste - Brushed Champagne (22kt Gold)

VAIA

33 500 809 Product version from 3/13/2017

Parts for other  
finishes can be found  
here: [Chrome](#)



### Spare parts list

| No. | Item Number        | Name         | Quantity used | Delivery time |
|-----|--------------------|--------------|---------------|---------------|
| 3   | 90 15 05 042 00 90 | cartridge    | 1.00          | 2             |
| 2   | 04 20 89 035 80-46 | pull-rod     | 1.00          | 30            |
| 4   | 09 24 04 266 90    | nut          | 1.00          | 2             |
| 7   | 09 20 80 020-46    | handle       | 1.00          | 60            |
| 6   | 09 28 30 021-46    | cover        | 1.00          | 60            |
| 10  | 09 31 11 011 90    | pin          | 1.00          | 2             |
| 1   | 90 28 22 311 00-46 | spout        | 1.00          | 30            |
| 12  | 04 30 04 100 00 90 | hose         | 2.00          | 2             |
| 9   | 90 31 20 087 00-46 | plug         | 1.00          | 30            |
| 11  | 04 30 11 038 00 90 | fixing set   | 1.00          | 2             |
| 5   | 09 14 10 091 90    | seal         | 1.00          | 2             |
| 13  | 90 11 01 001 00-46 | pop-up waste | 1.00          | 30            |
| 8   | 90 31 11 030 00 90 | pin          | 1.00          | 2             |