

## META Single-lever basin mixer with pop-up waste - Chrome

META

33 504 660 Product version from 5/1/2022 to 4/1/2025



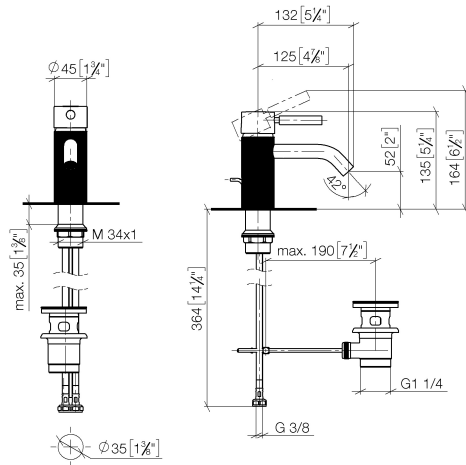
- 125mm projection
- With linear texture
- fixed spout
- circular, air-enriched flow
- height of mixer 135 mm
- height up to aerator 52 mm
- hole diameter 35 mm
- 2x screw-in M 8 x 1 pressure hose, leak-tested
- max. flow 5.7 l/min
- lead-free
- This product can help a building meet the requirements of Green Building Rating Systems, e.g. LEED®, BREEAM®, DGNB
- WRAS

Only suitable for basins with an overflow.

|   |                               |               |
|---|-------------------------------|---------------|
|    | Chrome                        | 33 504 660-00 |
|    | Brushed Platinum              | 33 504 660-06 |
|    | Dark Chrome                   | 33 504 660-19 |
|    | Light Gold                    | 33 504 660-26 |
|    | Brushed Light Gold            | 33 504 660-27 |
|    | Matte Black                   | 33 504 660-33 |
|    | Brushed Dark Brass            | 33 504 660-39 |
|    | Brushed Bronze                | 33 504 660-42 |
|    | Brushed Champagne (22kt Gold) | 33 504 660-46 |
|   | Champagne (22kt Gold)         | 33 504 660-47 |
|  | Brushed Chrome                | 33 504 660-93 |
|  | Brushed Dark Platinum         | 33 504 660-99 |

33 504 660 Product version from 5/1/2022 to 4/1/2025

mm [inches]



### Flow rate chart



### Codes & Standards

DIN 4109

ISO 3822

Scottish Water  
Byelaws

UK Water Supply  
Regulations

### Ü-Zeichen



## META Single-lever basin mixer with pop-up waste - Chrome

---

META

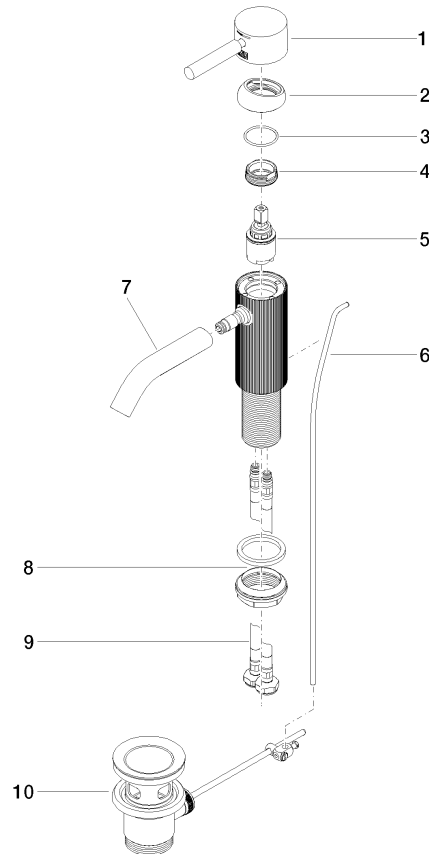
33 504 660 Product version from 5/1/2022 to 4/1/2025

### Certificates and sustainability

---

WRAS\_2003

LGA\_38



## Spare parts list

| No. | Item Number        | Name         | Quantity used | Delivery time |
|-----|--------------------|--------------|---------------|---------------|
| 8   | 04 23 10 044 07 90 | fixing set   | 1.00          | 2             |
| 7   | 90 11 06 206 00-00 | spout        | 1.00          | 10            |
| 6   | 09 31 09 110-00    | pull-rod     | 1.00          | 10            |
| 3   | 09 14 10 091 90    | seal         | 1.00          | 2             |
| 1   | 90 20 66 031 00-00 | handle       | 1.00          | 10            |
| 5   | 90 15 05 044 00 90 | cartridge    | 1.00          | 2             |
| 9   | 04 30 04 100 00 90 | hose         | 2.00          | 2             |
| 4   | 09 24 04 266 90    | nut          | 1.00          | 2             |
| 2   | 09 28 30 041-00    | cover        | 1.00          | 10            |
| 10  | 90 11 01 001 00-00 | pop-up waste | 1.00          | 10            |