

## META Single-lever basin mixer without pop-up waste - Chrome

META

33 505 661 Product version up to 1/23/2020

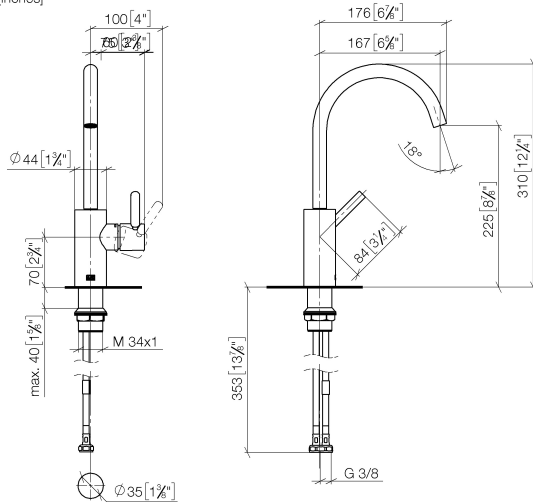


- 167mm projection
- pivotable spout 360°
- circular, air-enriched flow
- height of mixer 310 mm
- height up to aerator 225 mm
- hole diameter 35 mm
- 2x screw-in M 8 x 1 pressure hose, leak-tested
- max. flow 5.7 l/min
- lead-free
- This product can help a building meet the requirements of Green Building Rating Systems, e.g. LEED®, BREEAM®, DGNB
- WRAS

	Chrome	33 505 661-00
	Brushed Platinum	33 505 661-06
	Dark Chrome	33 505 661-19
	Light Gold	33 505 661-26
	Brushed Light Gold	33 505 661-27
	Matte Black	33 505 661-33
	Brushed Bronze	33 505 661-42
	Brushed Champagne (22kt Gold)	33 505 661-46
	Champagne (22kt Gold)	33 505 661-47
	Brushed Chrome	33 505 661-93
	Brushed Dark Platinum	33 505 661-99

33 505 661 Product version up to 1/23/2020

mm [inches]



### Flow rate chart



### Codes & Standards

DIN 4109

EN 817

ISO 3822

Scottish Water  
Byelaws

UK Water Supply  
Regulations

Ü-Zeichen



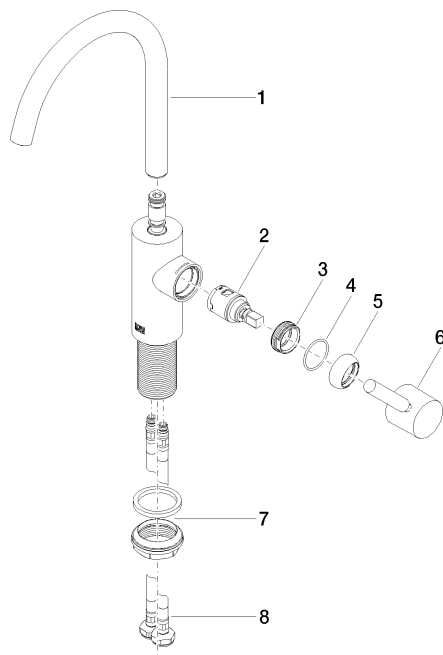
META Single-lever basin mixer without pop-up waste - Chrome

META

33 505 661 Product version up to 1/23/2020

Certificates and sustainability

DVGW_DW- 6506DN0	WRAS_2005	LGA_29
---------------------	-----------	--------



## Spare parts list

No.	Item Number	Name	Quantity used	Delivery time
5	09 28 30 021-00	cover	1.00	10
8	04 30 04 100 00 90	hose	2.00	2
4	09 14 10 091 90	seal	1.00	2
2	90 15 05 042 00 90	cartridge	1.00	2
6	90 20 66 003 00-00	handle	1.00	10
1	90 28 22 320 00-00	spout	1.00	10
3	09 24 04 266 90	nut	1.00	2
7	04 23 10 044 07 90	fixing set	1.00	2