

LISSE Single-lever basin mixer with raised base with pop-up waste - Matte Black



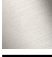




LISSE

33 506 845    Product version from 3/9/2016 to 10/31/2018



- 130mm projection
- fixed spout
- circular, air-enriched flow
- height of mixer 236 mm
- height up to aerator 185 mm
- hole diameter 35 mm
- 2x screw-in M 8 x 1 pressure hose, leak-tested
- max. flow 5.7 l/min
- lead-free
- This product can help a building meet the requirements of Green Building Rating Systems, e.g. LEED®, BREEAM®, DGNB
- WRAS

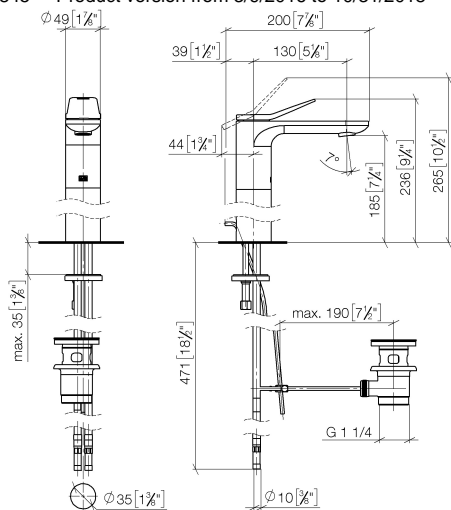
Only suitable for basins with an overflow.

	Matte Black	33 506 845-33
	Chrome	33 506 845-00
	Brushed Platinum	33 506 845-06
	Dark Chrome	33 506 845-19
	Brushed Light Gold	33 506 845-27
	Brushed Chrome	33 506 845-93
	Brushed Dark Platinum	33 506 845-99

# LISSE Single-lever basin mixer with raised base with pop-up waste - Matte Black

LISSE

33 506 845 Product version from 3/9/2016 to 10/31/2018  
mm [inches]



Flow rate chart



## Codes & Standards

DIN 4109

Executive Order  
no. 1007

ISO 3822

Scottish Water  
Byelaws

UK Water Supply  
Regulations

Ü-Zeichen



## LISSE Single-lever basin mixer with raised base with pop-up waste - Matte Black

LISSE

---

33 506 845 Product version from 3/9/2016 to 10/31/2018

Certificates and sustainability

---

LGA\_29

GDV\_0400

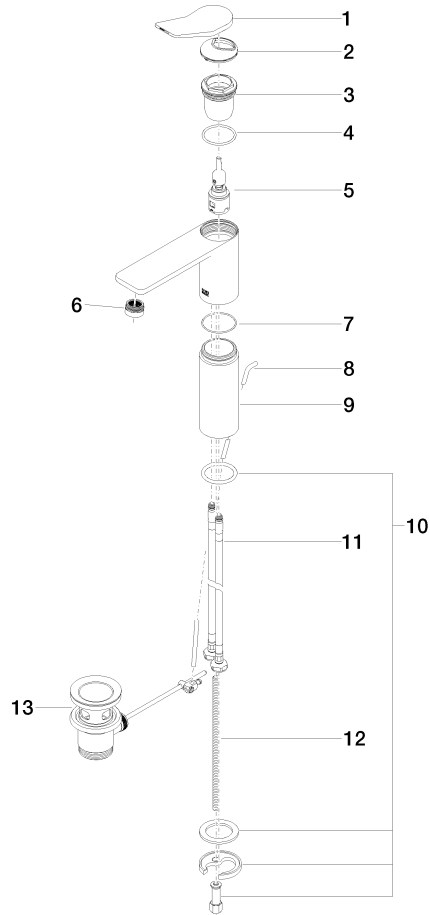
WRAS\_250402

## LISSE Single-lever basin mixer with raised base with pop-up waste - Matte Black

LISSE

33 506 845 Product version from 3/9/2016 to 10/31/2018

Parts for other  
finishes can be found  
here: [Chrome](#)



### Spare parts list

No.	Item Number	Name	Quantity used	Delivery time
	12 09 31 11 000 90	pin	1.00	2
	3 09 23 10 123 90	nut	1.00	2
	1 90 20 84 020 00-33	handle	1.00	30
	9 09 28 22 305-33	sleeve	1.00	30
	10 04 30 11 038 75 90	fixing set	1.00	2
	5 90 15 05 042 01 90	cartridge	1.00	2
	11 04 30 04 101 00 90	hose	2.00	2
	7 09 14 10 108 90	seal	1.00	2
	6 90 23 01 161 01-33	aerator	1.00	30
	2 09 28 30 034 90	cover	1.00	2
	8 09 31 09 120-33	pull-rod	1.00	30
	4 09 14 10 038 90	seal	1.00	2
	13 90 11 01 001 00-33	pop-up waste	1.00	30