

## TARA ULTRA Single-lever mixer - Brushed Bronze

TARA ULTRA

33 800 875 Product version from 6/1/2022



- 201mm projection
- pivotable spout 360°
- air-enriched flow
- height of mixer 373 mm
- height up to aerator 240 mm
- hole diameter 35 mm
- max. flow 8 l/min at 3 bar flow pressure
- lead-free
- This product can help a building meet the requirements of Green Building Rating Systems, e.g. LEED®, BREEAM®, DGNB
- WRAS

	Brushed Bronze	33 800 875-42
	Chrome	33 800 875-00
	Brushed Platinum	33 800 875-06
	Platinum	33 800 875-08
	Durabrass (23kt Gold)	33 800 875-09
	Dark Chrome	33 800 875-19
	Brushed Durabrass (23kt Gold)	33 800 875-28
	Matte Black	33 800 875-33
	Brushed Champagne (22kt Gold)	33 800 875-46
	Champagne (22kt Gold)	33 800 875-47
	Brushed Chrome	33 800 875-93
	Brushed Dark Platinum	33 800 875-99

### Recommended miscellaneous

**Dispenser without rosette -  
Brushed Bronze**

82 424 970-42



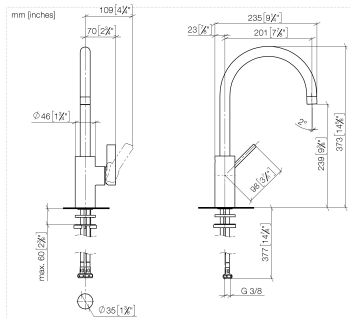
### Recommended miscellaneous

**Strainer waste with control handle  
- Brushed Bronze**

10 712 970-42



33 800 875 Product version from 6/1/2022



### Flow rate chart



## Codes & Standards

DIN 4109

Executive Order  
no. 1007

ISO 3822

Ü-Zeichen



## TARA ULTRA Single-lever mixer - Brushed Bronze

TARA ULTRA

33 800 875 Product version from 6/1/2022

### Certificates and sustainability

GDV\_0400

LGA\_18

33 800 875 Product version from 6/1/2022

Parts for other  
finishes can be found  
here: [Chrome](#)

