

## TARA Single-lever mixer - Platinum

TARA

33 800 888 Product version from 5/31/2010 to 10/27/2020



- 201mm projection
- pivotable spout 360°
- air-enriched flow
- height of mixer 325 mm
- height up to aerator 180 mm
- hole diameter 35 mm
- max. flow 7 l/min at 3 bar flow pressure
- lead-free
- WRAS
- This product can help a building meet the requirements of Green Building Rating Systems, e.g. LEED®, BREEAM®, DGNB

	Platinum	33 800 888-08
	Chrome	33 800 888-00
	Brushed Platinum	33 800 888-06
	Durabronze (23kt Gold)	33 800 888-09
	Dark Chrome	33 800 888-19
	Brushed Durabronze (23kt Gold)	33 800 888-28
	Matte Black	33 800 888-33
	Brushed Bronze	33 800 888-42
	Brushed Champagne (22kt Gold)	33 800 888-46
	Champagne (22kt Gold)	33 800 888-47
	Brushed Chrome	33 800 888-93
	Brushed Dark Platinum	33 800 888-99

### Recommended miscellaneous

**Strainer waste with control handle - Platinum** 10 710 970-08

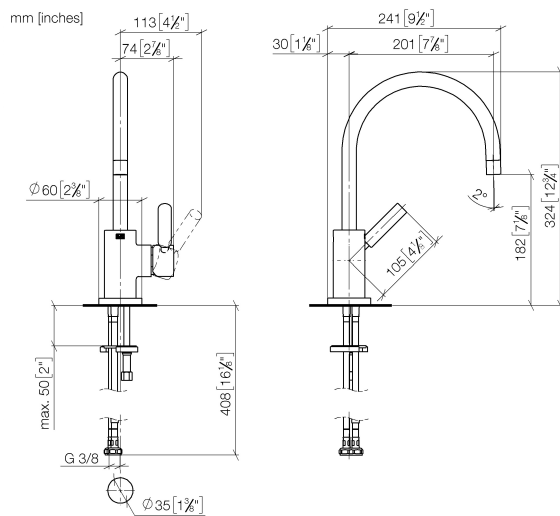


### Recommended miscellaneous

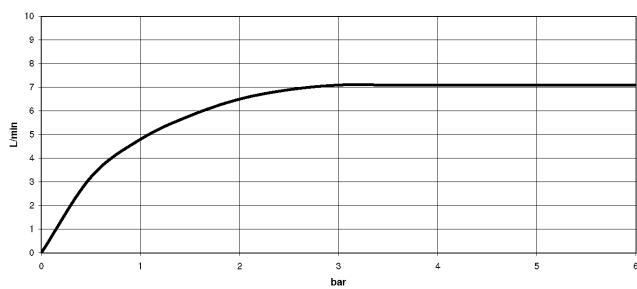
**Dispenser with rosette - Platinum** 82 444 970-08



33 800 888 Product version from 5/31/2010 to 10/27/2020



**Flow rate chart**



**Codes & Standards**

DIN 4109	EN 817	Executive Order no. 1007	ISO 3822
Scottish Water Byelaws	UK Water Supply Regulations	Ü-Zeichen	VA-Zeichen



TARA Single-lever mixer - Platinum

TARA

33 800 888    Product version from 5/31/2010 to 10/27/2020

Certificates and sustainability

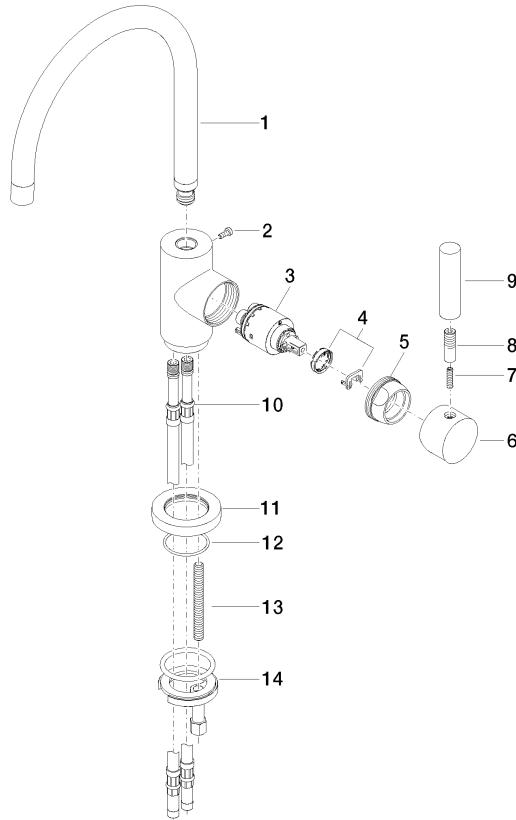
GDV_0400	ETA_18	LGA_8	WRAS_2311
----------	--------	-------	-----------

## TARA Single-lever mixer - Platinum

TARA

33 800 888 Product version from 5/31/2010 to 10/27/2020

Parts for other  
finishes can be found  
here: [Chrome](#)



### Spare parts list

No.	Item Number	Name	Quantity used	Delivery time
5	09 24 04 107-08	nut	1.00	40
11	09 28 10 055-08	rosette	1.00	40
1	90 28 22 048 02-08	spout	1.00	40
12	09 14 10 034 90	seal	1.00	2
7	09 31 11 010 90	pin	1.00	2
6	90 20 88 040 00-08	handle	1.00	40
2	09 30 30 054 90	screw	1.00	2
10	04 30 04 064 00 90	hose	2.00	2
13	09 31 11 011 90	pin	1.00	2
14	04 30 11 038 00 90	fixing set	1.00	2
9	11 170 880-08	handle	1.00	40
3	90 15 05 065 00 90	cartridge	1.00	2
8	90 24 04 048 00-08	nipple	1.00	40
4	90 28 10 148 00 90	accessories	1.00	2