

## Concealed single-lever mixer with diverter - Brushed Bronze

SERIES SPECIFIC

36 120 660 Product version from 2/20/2020



- automatic diverter
- cover plate Ø 150 mm
- WRAS

|   |                               |               |
|---|-------------------------------|---------------|
|    | Brushed Bronze                | 36 120 660-42 |
|    | Chrome                        | 36 120 660-00 |
|    | Brushed Platinum              | 36 120 660-06 |
|    | Platinum                      | 36 120 660-08 |
|    | Dark Chrome                   | 36 120 660-19 |
|    | Light Gold                    | 36 120 660-26 |
|    | Brushed Light Gold            | 36 120 660-27 |
|    | Brushed Durabrass (23kt Gold) | 36 120 660-28 |
|    | Matte Black                   | 36 120 660-33 |
|   | Brushed Champagne (22kt Gold) | 36 120 660-46 |
|  | Champagne (22kt Gold)         | 36 120 660-47 |
|  | Brushed Chrome                | 36 120 660-93 |
|  | Brushed Dark Platinum         | 36 120 660-99 |

### Required miscellaneous



**Concealed single-lever mixer with backflow preventor -** 35 021 970 90

- min. recess depth 80 mm
- max. recess depth 105 mm

### Recommended miscellaneous



**xGRID Attachment set for integrating in the dry wall construction -** 12 340 970 90

### Required miscellaneous



**Concealed single-lever mixer -** 35 020 970 90

- min. recess depth 80 mm
- max. recess depth 105 mm

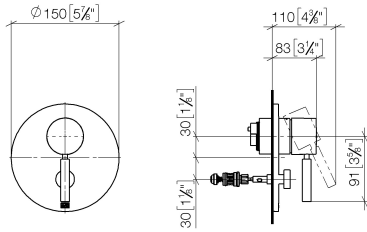
### Required miscellaneous



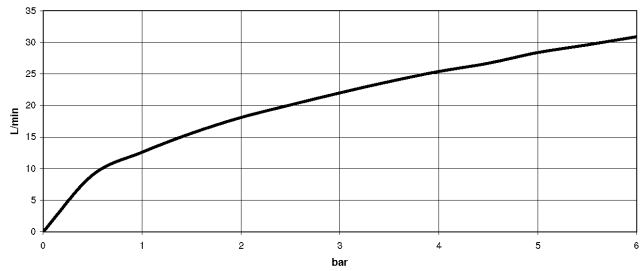
**xGRID Installation track 555 mm -** 12 360 970 90

36 120 660    Product version from 2/20/2020

mm [inches]



### Flow rate chart



### Codes & Standards

DIN 4109

ISO 3822

Scottish Water  
Byelaws

UK Water Supply  
Regulations

Ü-Zeichen



## Concealed single-lever mixer with diverter - Brushed Bronze

SERIES SPECIFIC

36 120 660 Product version from 2/20/2020

Certificates and sustainability

LGA\_19

WRAS\_2207

