

## VAIA Concealed single-lever mixer with diverter - Brushed Dark Platinum

VAIA

36 120 809 Product version from 3/13/2017 to 2/20/2020



- automatic diverter
- cover plate Ø 150 mm
- WRAS

	Brushed Dark Platinum	36 120 809-99
	Chrome	36 120 809-00
	Brushed Platinum	36 120 809-06
	Platinum	36 120 809-08
	Dark Chrome	36 120 809-19
	Brushed Durabronze (23kt Gold)	36 120 809-28
	Brushed Dark Brass	36 120 809-39
	Brushed Bronze	36 120 809-42
	Brushed Champagne (22kt Gold)	36 120 809-46
	Champagne (22kt Gold)	36 120 809-47

### Required miscellaneous



- Concealed single-lever mixer -** 35 020 970 90
- max. recess depth 105 mm
  - min. recess depth 80 mm

### Recommended miscellaneous



- xGRID Attachment set for integrating in the dry wall construction -** 12 340 970 90

### Required miscellaneous



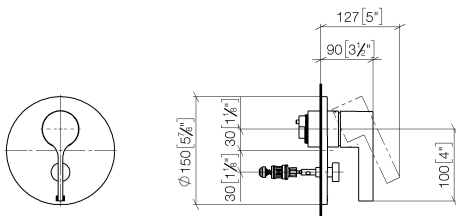
- Concealed single-lever mixer with backflow preventor -** 35 021 970 90
- max. recess depth 105 mm
  - min. recess depth 80 mm

### Required miscellaneous



- xGRID Installation track 555 mm -** 12 360 970 90

mm [inches]



### Flow rate chart



### Codes & Standards

DIN 4109

ISO 3822

Scottish Water  
Byelaws

UK Water Supply  
Regulations

Ü-Zeichen



## VAIA Concealed single-lever mixer with diverter - Brushed Dark Platinum

---

VAIA

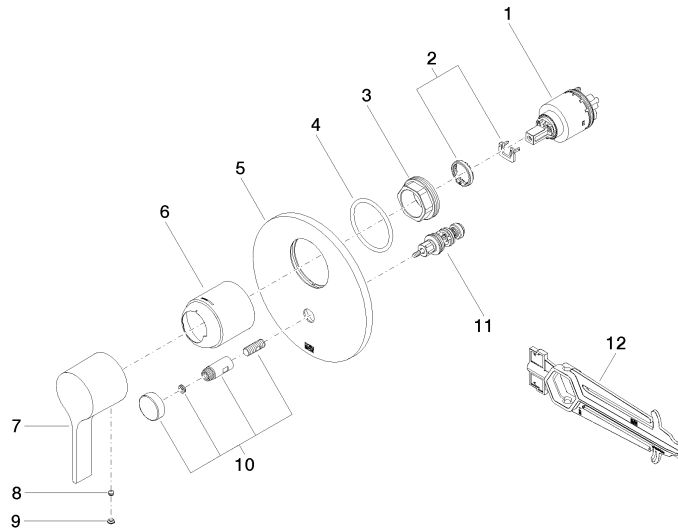
36 120 809 Product version from 3/13/2017 to 2/20/2020

### Certificates and sustainability

---

LGA\_19

WRAS\_2207



## Spare parts list

No.	Item Number	Name	Quantity used	Delivery time
1	90 15 05 038 00 90	cartridge	1.00	60
6	09 11 02 260-99	sleeve	1.00	20
9	90 31 20 087 00-99	plug	1.00	20
10	90 31 09 139 00-99	pull-rod	1.00	20
4	09 14 10 084 90	seal	1.00	2
2	04 28 10 149 00 90	accessories	1.00	2
3	09 24 04 448 90	nut	1.00	2
11	90 21 34 081 00 90	diverter	1.00	2
5	09 11 02 261-99	plate	1.00	20
7	09 20 80 023-99	handle	1.00	20
12	90 30 09 064 00 90	key	1.00	2
8	90 31 11 063 00 90	pin	1.00	2