

MADISON Concealed two-way diverter - Durabrand (23kt Gold)






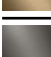

MADISON

36 200 361


Product version from 4/1/2022



- rotary diverter
- rosette Ø 60 mm
- NEUTRAL porcelain insert
- WRAS

	Durabrand (23kt Gold)	36 200 361-09
	Chrome	36 200 361-00
	Brushed Platinum	36 200 361-06
	Platinum	36 200 361-08
	Brushed Durabrand (23kt Gold)	36 200 361-28
	Brushed Dark Brass	36 200 361-39
	Brushed Dark Platinum	36 200 361-99

Required miscellaneous

	<div>Concealed two-way diverter -</div> <div> <div>•min. recess depth 85 mm</div> <div>•max. recess depth 155 mm</div> </div>	35 202 970 90
---	---	---------------



Flow rate chart



Codes & Standards

DIN 4109	ISO 3822	Scottish Water Byelaws	UK Water Supply Regulations
----------	----------	------------------------	-----------------------------

Ü-Zeichen



MADISON Concealed two-way diverter - Durabrand (23kt Gold)

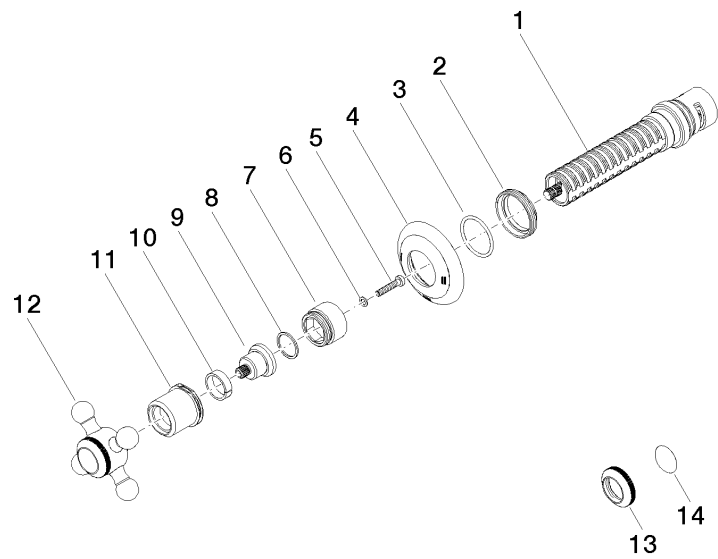
MADISON

36 200 361 Product version from 4/1/2022

Certificates and sustainability

LGA_38

WRAS_2307



Spare parts list

No.	Item Number	Name	Quantity used	Delivery time
12	04 20 36 100 02-09	handle	1.00	40
1	90 90 03 304 10 90	diverter	1.00	2
4	09 27 36 105-09	rosette	1.00	60
2	09 23 10 125-00	nut	1.00	10
11	09 21 02 161-09	cover	1.00	40
9	09 12 12 064-09	base	1.00	60
6	09 30 11 194 90	disc	1.00	2
7	09 18 30 007-09	sleeve	1.00	60
14	09 26 01 016 90	accessories	1.00	2
13	09 20 36 005-09	handle	1.00	40
10	90 14 15 021 00 90	ring	1.00	2
3	90 14 10 063 00 90	seal	1.00	2
5	90 30 30 075 00 90	screw	1.00	2
8	90 28 10 030 00 90	ring	1.00	2