

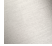





36 200 361 Product version from 4/1/2022



- rotary diverter
- rosette Ø 60 mm
- NEUTRAL porcelain insert
- WRAS

	Brushed Durabron (23kt Gold)	36 200 361-28
	Chrome	36 200 361-00
	Brushed Platinum	36 200 361-06
	Platinum	36 200 361-08
	Durabron (23kt Gold)	36 200 361-09
	Brushed Dark Platinum	36 200 361-99

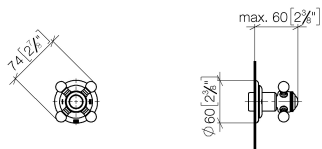
Required miscellaneous



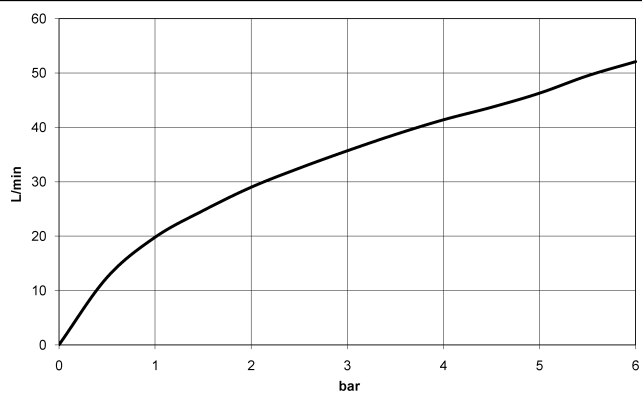
- Concealed two-way diverter - 35 202 970 90**
- min. recess depth mm
 - max. recess depth mm

36 200 361 Product version from 4/1/2022

mm [inches]



Flow rate chart



Codes & Standards

DIN 4109

ISO 3822

Scottish Water
Byelaws

UK Water Supply
Regulations

Ü-Zeichen



MADISON Concealed two-way diverter - Brushed Durabronze (23kt Gold)

MADISON

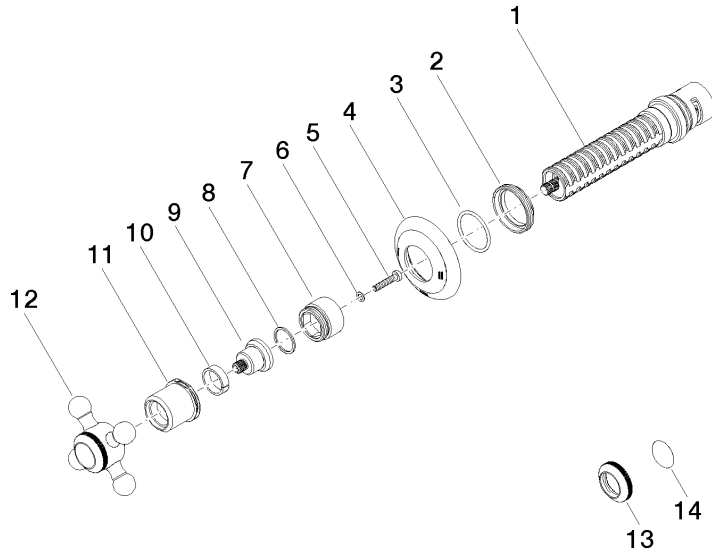
36 200 361 Product version from 4/1/2022

Certificates

LGA_38

WRAS_2307

36 200 361 Product version from 4/1/2022



Spare parts list

No.	Item Number	Name	Quantity used	Delivery time
1	90 90 03 304 10 90	diverter	1	2
2	09 23 10 125-00	nut	1	10
3	90 14 10 063 00 90	seal	1	2
4	09 27 36 105-28	rosette	1	60
5	90 30 30 075 00 90	screw	1	2
6	09 30 11 194 90	disc	1	2
7	09 18 30 007-28	sleeve	1	-
Spare part can no longer be ordered, please order the replacement item				
8	90 28 10 030 00 90	ring	1	2
9	09 12 12 064-28	base	1	-
Spare part can no longer be ordered, please order the replacement item				
10	90 14 15 021 00 90	ring	1	2
11	09 21 02 161-28	cover	1	20
12	04 20 36 100 02-28	handle	1	20
13	09 20 36 005-28	handle	1	20
14	09 26 01 016 90	accessories	1	2