



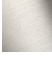






VAIA Concealed two-way diverter - Brushed Champagne (22kt Gold)

VAIA

36 200 819    Product version from 4/1/2022



- rotary diverter
- rosette Ø 60 mm
- WRAS

|   |                               |               |
|---|-------------------------------|---------------|
|  | Brushed Champagne (22kt Gold) | 36 200 819-46 |
|  | Chrome                        | 36 200 819-00 |
|  | Brushed Platinum              | 36 200 819-06 |
|  | Dark Chrome                   | 36 200 819-19 |
|  | Brushed Durabrass (23kt Gold) | 36 200 819-28 |
|  | Brushed Dark Brass            | 36 200 819-39 |
|  | Brushed Bronze                | 36 200 819-42 |
|  | Champagne (22kt Gold)         | 36 200 819-47 |
|  | Brushed Dark Platinum         | 36 200 819-99 |

Required miscellaneous



- Concealed two-way diverter -**  
 •max. recess depth 160 mm  
 •min. recess depth 85 mm

35 202 970 90

mm [inches]



Flow rate chart



Codes & Standards

|          |          |                           |                                |
|----------|----------|---------------------------|--------------------------------|
| DIN 4109 | ISO 3822 | Scottish Water<br>Byelaws | UK Water Supply<br>Regulations |
|----------|----------|---------------------------|--------------------------------|

Ü-Zeichen



## VAIA Concealed two-way diverter - Brushed Champagne (22kt Gold)

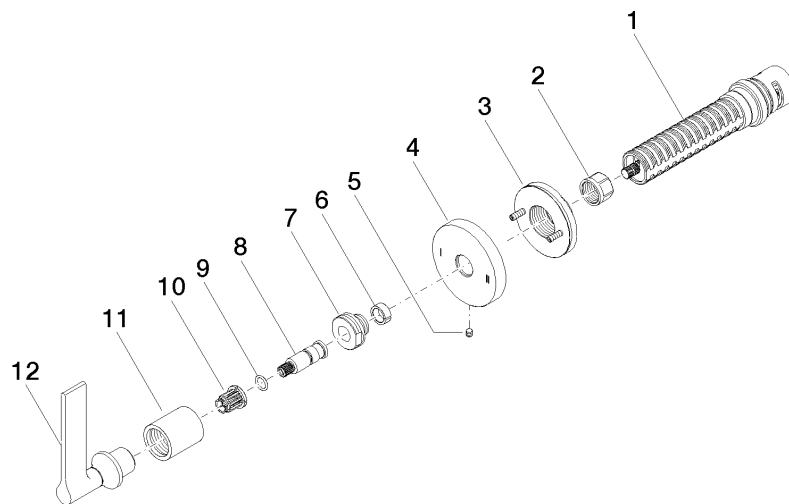
VAIA

36 200 819 Product version from 4/1/2022

Certificates and sustainability

LGA\_38

WRAS\_2307



## Spare parts list

| No. | Item Number        | Name       | Quantity used | Delivery time |
|-----|--------------------|------------|---------------|---------------|
| 7   | 09 24 05 002 90    | nipple     | 1.00          | 2             |
| 3   | 90 21 02 181 00 90 | disc       | 1.00          | 2             |
| 11  | 09 21 02 070-46    | cover      | 1.00          | 30            |
| 5   | 09 31 11 294 90    | pin        | 1.00          | 2             |
| 4   | 09 27 89 118-46    | rosette    | 1.00          | 30            |
| 8   | 09 29 06 022 90    | spindle    | 1.00          | 2             |
| 10  | 90 12 12 002 00 90 | fixing cap | 1.00          | 2             |
| 12  | 90 20 80 015 01-46 | handle     | 1.00          | 30            |
| 1   | 90 90 03 304 10 90 | diverter   | 1.00          | 2             |
| 2   | 90 23 30 023 00 90 | nut        | 1.00          | 2             |
| 9   | 90 14 10 060 00 90 | seal       | 1.00          | 2             |
| 6   | 90 14 15 020 03 90 | ring       | 1.00          | 2             |