



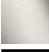




**SYMETRICS Concealed three-way diverter - Brushed Champagne (22kt Gold)**

IMO

36 210 980

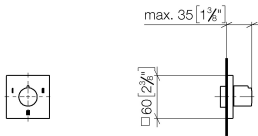


- rotary diverter
- rosette 60 x 60 mm
- WRAS 2307045

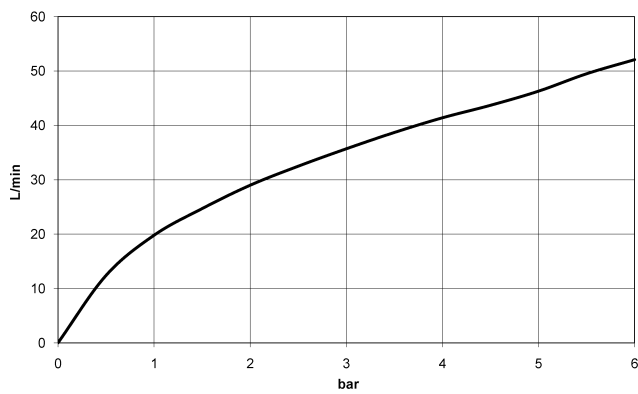
	Brushed Champagne (22kt Gold)	36 210 980-46
	Chrome	36 210 980-00
	Brushed Platinum	36 210 980-06
	Brushed Light Gold	36 210 980-27
	Brushed Durabronze (23kt Gold)	36 210 980-28
	Champagne (22kt Gold)	36 210 980-47
	Brushed Dark Platinum	36 210 980-99

36 210 980

mm [inches]



**Flow rate chart**



**Codes & Standards**

DIN 4109

ISO 3822

Scottish Water  
Byelaws

UK Water Supply  
Regulations

**Ü-Zeichen**



**SYMETRICS Concealed three-way diverter - Brushed Champagne (22kt Gold)**

---

IMO

36 210 980

Certificates

---

WRAS\_2307

LGA\_38



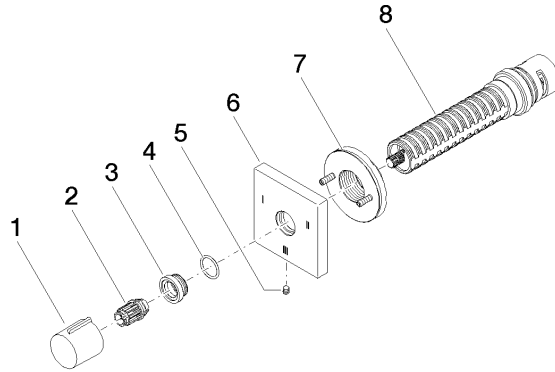
# SYMETRICS Concealed three-way diverter - Brushed Champagne (22kt Gold)

IMO

36 210 980

## Product version from 4/1/2022

Parts for other finishes can be found here: [Chrome](#)





**SYMETRICS Concealed three-way diverter - Brushed Champagne (22kt Gold)**

IMO

36 210 980

**Spare parts list**

**Product version from 4/1/2022**

No.	Item Number	Name	Quantity used	Delivery time
	09 20 98 001-46	handle	8	60