

## xTOOL Concealed thermostat without volume control 1/2" - Chrome

SERIES SPECIFIC

36 501 780 Product version up to 2/2/2021



- cover plate 120 x 120 mm
- temperature control handle with safety limit stop at 38°C
- thermostat cartridge
- WRAS

	Chrome	36 501 780-00
	Brushed Platinum	36 501 780-06
	Platinum	36 501 780-08
	Dark Chrome	36 501 780-19
	Brushed Light Gold	36 501 780-27
	Brushed Durabronze (23kt Gold)	36 501 780-28
	Matte Black	36 501 780-33
	Brushed Chrome	36 501 780-93
	Brushed Dark Platinum	36 501 780-99

### Required miscellaneous



**xTOOL Concealed thermostat module without volume control -** 35 503 970 90  
 • max. recess depth 155 mm  
 • min. recess depth 115 mm

### Recommended miscellaneous



**xGRID Attachment set for integrating in the dry wall construction -** 12 340 970 90

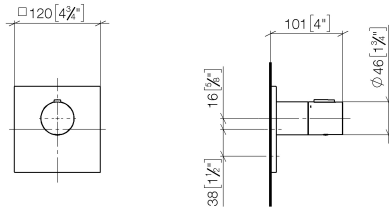
### Required miscellaneous



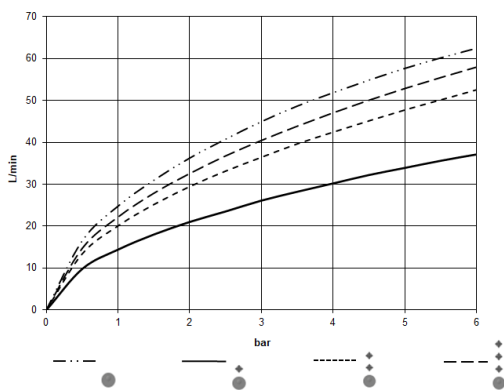
**xGRID Installation track 555 mm -** 12 360 970 90

36 501 780 Product version up to 2/2/2021

mm [inches]



### Flow rate chart



### Codes & Standards

DIN 4109

EN 1111

ISO 3822

Scottish Water  
Byelaws

UK Water Supply  
Regulations

Ü-Zeichen



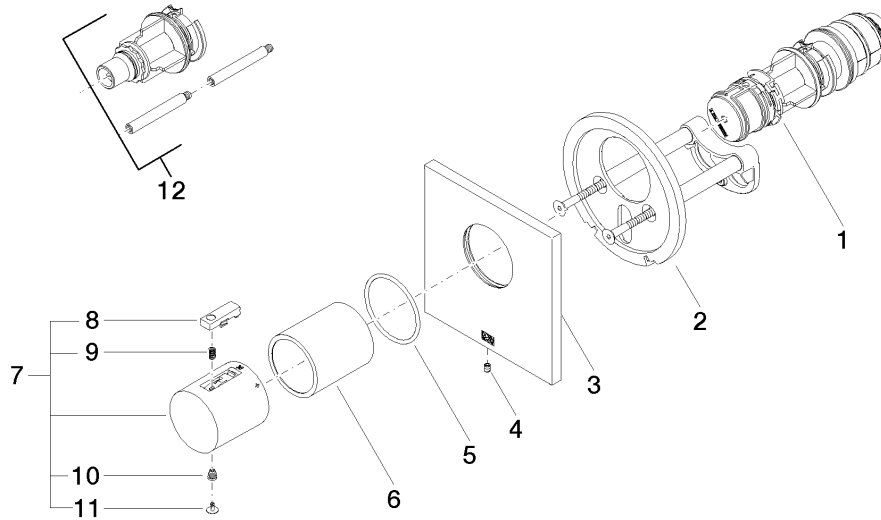
xTOOL Concealed thermostat without volume control 1/2" - Chrome

SERIES SPECIFIC

36 501 780 Product version up to 2/2/2021

Certificates and sustainability

WRAS_2011	DVGW_DW- 6512DN0	LGA_29	LGA_29
-----------	---------------------	--------	--------



## Spare parts list

No.	Item Number	Name	Quantity used	Delivery time
2	90 11 01 196 00 90	base	1.00	2
9	90 16 02 027 00 90	spring	1.00	2
12	12 178 970 90	Extension 46 mm -	1.00	2
7	90 17 33 004 00-00	handle	1.00	10
4	09 31 11 044 90	pin	1.00	2
10	90 30 30 136 00 90	screw	1.00	2
5	90 14 10 049 00 90	seal	1.00	2
6	90 21 02 112 00-00	sleeve	1.00	10
11	90 31 20 049 00-00	plug	1.00	10
3	90 11 02 533 00-00	cover	1.00	10
8	90 21 33 011 00-13	handle	1.00	2
1	90 15 02 065 00 90	cartridge	1.00	2