

xTOOL Concealed thermostat without volume control 1/2" - Brushed Platinum SERIES SPECIFIC

36 501 979 Product version up to 2/2/2021



- cover plate Ø 124 mm
- temperature control handle with safety limit stop at 38°C
- thermostat cartridge
- WRAS

| | | |
|--|-------------------------------|---------------|
| | Brushed Platinum | 36 501 979-06 |
| | Chrome | 36 501 979-00 |
| | Platinum | 36 501 979-08 |
| | Durabrand (23kt Gold) | 36 501 979-09 |
| | Dark Chrome | 36 501 979-19 |
| | Light Gold | 36 501 979-26 |
| | Brushed Light Gold | 36 501 979-27 |
| | Brushed Durabrand (23kt Gold) | 36 501 979-28 |
| | Matte Black | 36 501 979-33 |
| | Brushed Dark Brass | 36 501 979-39 |
| | Brushed Bronze | 36 501 979-42 |
| | Brushed Champagne (22kt Gold) | 36 501 979-46 |
| | Champagne (22kt Gold) | 36 501 979-47 |
| | Brushed Chrome | 36 501 979-93 |
| | Brushed Dark Platinum | 36 501 979-99 |

Required miscellaneous



xTOOL Concealed thermostat module without volume control - 35 503 970 90
 • max. recess depth 110 mm
 • min. recess depth 85 mm

Recommended miscellaneous



xGRID Attachment set for integrating in the dry wall construction - 12 340 970 90

Required miscellaneous

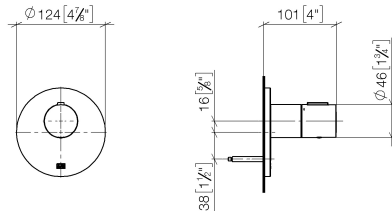


xGRID Installation track 555 mm - 12 360 970 90

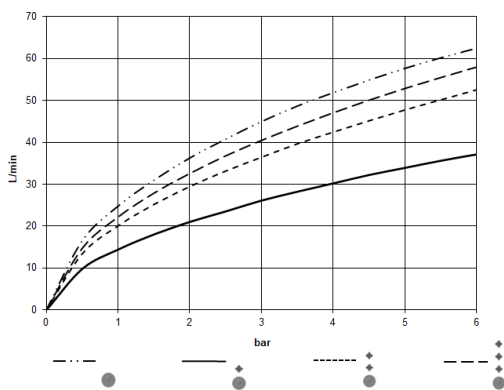
xTOOL Concealed thermostat without volume control 1/2" - Brushed Platinum **SERIES SPECIFIC**

36 501 979 Product version up to 2/2/2021

mm [inches]



Flow rate chart



Codes & Standards

| | | | |
|-----------------------------|-----------|----------|------------------------|
| DIN 4109 | EN 1111 | ISO 3822 | Scottish Water Byelaws |
| UK Water Supply Regulations | Ü-Zeichen | | |



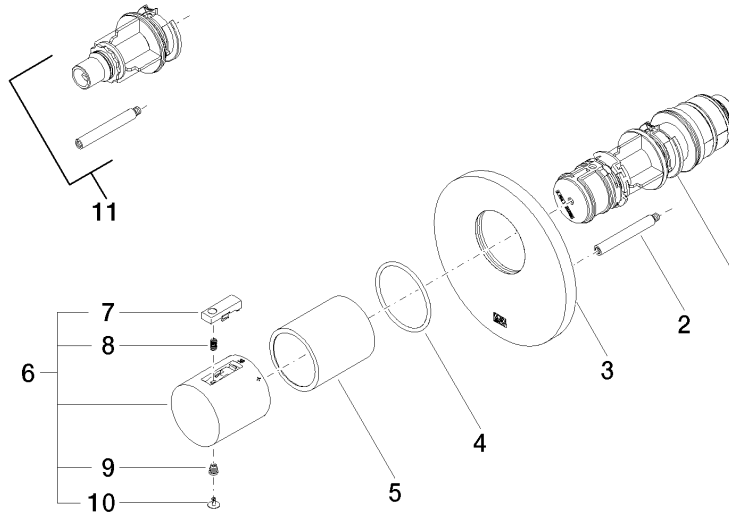
xTOOL Concealed thermostat without volume control 1/2" - Brushed Platinum

SERIES SPECIFIC

36 501 979 Product version up to 2/2/2021

Certificates and sustainability

| | | | |
|-----------|---------------------|--------|--------|
| WRAS_2011 | DVGW_DW- 6512DN0 | LGA_29 | LGA_29 |
|-----------|---------------------|--------|--------|



Spare parts list

| No. | Item Number | Name | Quantity used | Delivery time |
|-----|--------------------|-------------------|---------------|---------------|
| 6 | 90 17 33 004 00-06 | handle | 1.00 | 10 |
| 11 | 12 178 970 90 | Extension 46 mm - | 1.00 | 2 |
| 3 | 09 11 02 162-06 | cover | 1.00 | 60 |
| 8 | 90 16 02 027 00 90 | spring | 1.00 | 2 |
| 9 | 90 30 30 136 00 90 | screw | 1.00 | 2 |
| 5 | 90 21 02 112 00-06 | sleeve | 1.00 | 10 |
| 4 | 90 14 10 049 00 90 | seal | 1.00 | 2 |
| 10 | 90 31 20 049 00-13 | plug | 1.00 | 30 |
| 2 | 90 31 09 095 00 90 | bar | 1.00 | 2 |
| 7 | 90 21 33 011 00-13 | handle | 1.00 | 2 |
| 1 | 90 15 02 065 00 90 | cartridge | 1.00 | 2 |