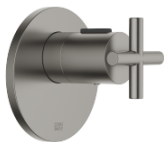


## TARA xTOOL Concealed thermostat without volume control 3/4" - Brushed Dark Platinum

TARA

36 503 892 Product version from 5/1/2022



- cover plate Ø 123 mm
- temperature control handle with safety limit stop at 38°C
- thermostat cartridge
- WRAS

	Brushed Dark Platinum	36 503 892-99
	Chrome	36 503 892-00
	Brushed Platinum	36 503 892-06
	Platinum	36 503 892-08
	Dark Chrome	36 503 892-19
	Brushed Durabronze (23kt Gold)	36 503 892-28
	Matte Black	36 503 892-33
	Brushed Dark Brass	36 503 892-39
	Brushed Bronze	36 503 892-42
	Brushed Champagne (22kt Gold)	36 503 892-46
	Champagne (22kt Gold)	36 503 892-47
	Brushed Chrome	36 503 892-93

### Required miscellaneous



**xTOOL Concealed thermostat module without volume control -** 35 503 970 90

- max. recess depth 160 mm
- min. recess depth 95 mm

### Recommended miscellaneous



**xGRID Attachment set for integrating in the dry wall construction -** 12 340 970 90

### Required miscellaneous



**xGRID Installation track 555 mm -** 12 360 970 90

## TARA xTOOL Concealed thermostat without volume control 3/4" - Brushed Dark Platinum

TARA

36 503 892 Product version from 5/1/2022  
mm [inches]



### Flow rate chart



### Codes & Standards

DIN 4109

ISO 3822

Scottish Water  
Byelaws

UK Water Supply  
Regulations

### Ü-Zeichen



TARA xTOOL Concealed thermostat without volume control 3/4" - Brushed  
Dark Platinum

TARA

36 503 892    Product version from 5/1/2022

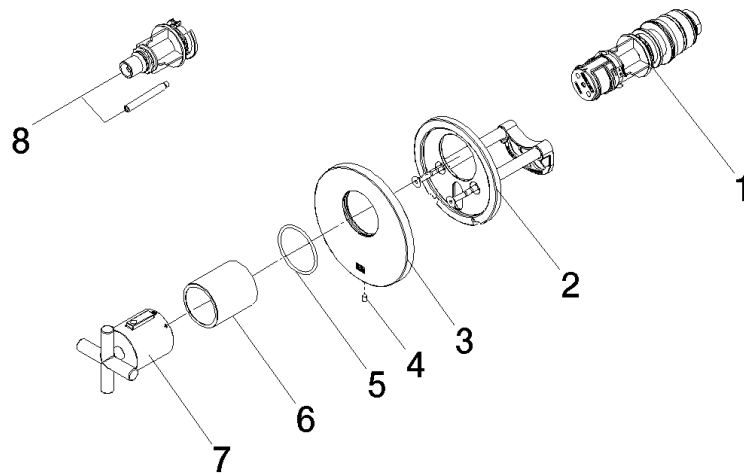
Certificates and sustainability

WRAS_2011	LGA_29	LGA_29	LGA_29
-----------	--------	--------	--------

# TARA xTOOL Concealed thermostat without volume control 3/4" - Brushed Dark Platinum

TARA

36 503 892 Product version from 5/1/2022



## Spare parts list

No.	Item Number	Name	Quantity used	Delivery time
8	12 178 970 90	Extension 46 mm -	1.00	2
7	90 17 33 027 00-99	handle	1.00	20
3	09 11 02 537-99	cover	1.00	20
4	09 31 11 048 90	pin	1.00	2
2	90 11 01 196 00 90	base	1.00	2
5	90 14 10 049 00 90	seal	1.00	2
6	90 21 02 112 00-99	sleeve	1.00	20
1	90 15 02 063 00 90	cartridge	1.00	2