

WATER CURVE Concealed body spray - Brushed Platinum

SERIES-VARIOUS

36 514 979
Product version from 4/1/2024



- AQUAPRESSURE FLOW, max. flow rate 10 l/min (at 3 bar)
- water jet adjustable
- Function from: l/min

Technical data:

- cover plate 120 x 60 mm
- 1/2" connection

	Brushed Platinum	36 514 979-06
	Chrome	36 514 979-00
	Platinum	36 514 979-08
	Dark Chrome	36 514 979-19
	Light Gold	36 514 979-26
	Brushed Light Gold	36 514 979-27
	Brushed Durabrass (23kt Gold)	36 514 979-28
	Matte Black	36 514 979-33
	Brushed Dark Brass	36 514 979-39
	Brushed Bronze	36 514 979-42
	Brushed Champagne (22kt Gold)	36 514 979-46
	Champagne (22kt Gold)	36 514 979-47
	Brushed Chrome	36 514 979-93
	Brushed Dark Platinum	36 514 979-99

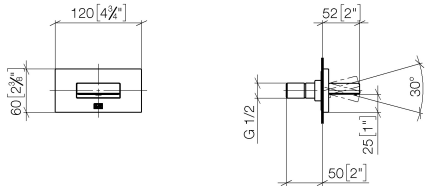
Recommended miscellaneous



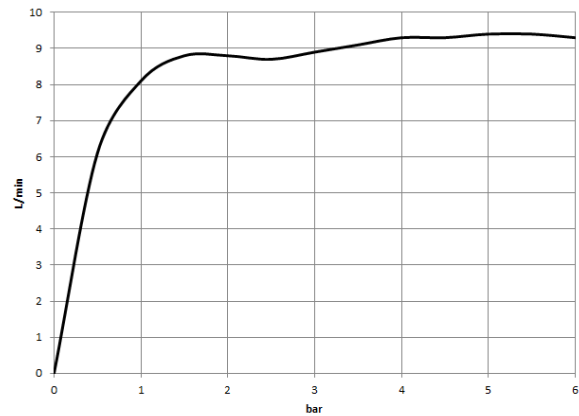
- Concealed wall elbow -**

35 085 970 90

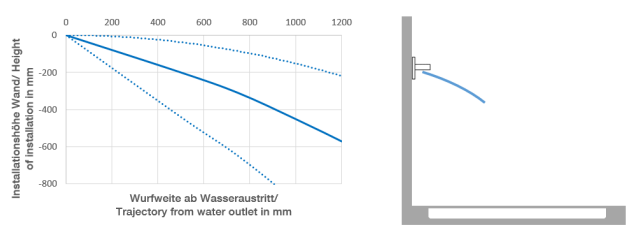
- max. recess depth 163 mm
 - min. recess depth 90 mm



Flow rate chart



Trajectory diagram



Codes & Standards

DIN 4109	ISO 3822	Scottish Water Byelaws	UK Water Supply Regulations
----------	----------	------------------------	-----------------------------

Ü-Zeichen



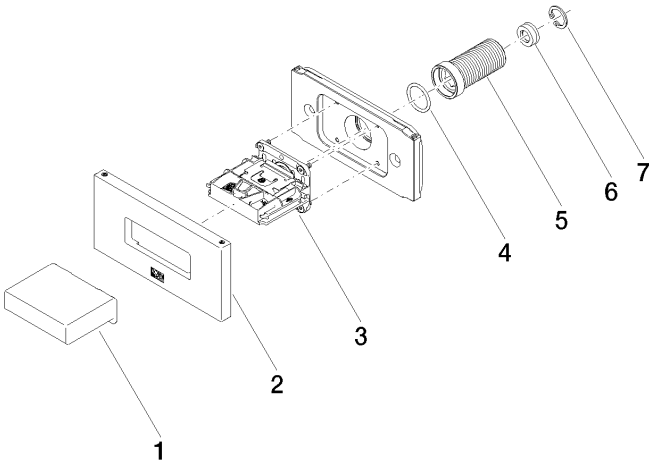
WATER CURVE Concealed body spray - Brushed Platinum

SERIES-VARIOUS

36 514 979 Product version from 4/1/2024

Certificates and sustainability

WRAS_2005 LGA_29 WRAS_250602



Spare parts list

No.	Item Number	Name	Quantity used	Delivery time
6	09 23 01 134 90	flow reducer	1.00	2
2	90 27 97 041 00-06	rosette	1.00	10
3	90 29 03 088 00 90	insert	1.00	2
7	09 16 01 014 90	ring	1.00	2
1	09 17 01 230-06	casing	1.00	10
5	09 24 04 336 90	nipple	1.00	2
4	90 14 10 010 00 90	seal	1.00	2