

META META SLIM Wall-mounted single-lever basin mixer without pop-up waste - Brushed Platinum

META

36 860 662 Product version up to 9/1/2021



- 190mm projection
- fixed spout
- circular, air-enriched flow
- hole diameter spout 37 mm
- hole diameter single-lever mixer 57 mm
- rosette for spout Ø 55mm
- rosette for mixer Ø 78mm
- max. flow 5.7 l/min
- lead-free
- This product can help a building meet the requirements of Green Building Rating Systems, e.g. LEED®, BREEAM®, DGNB

| | | |
|--|-------------------------------|---------------|
| | Brushed Platinum | 36 860 662-06 |
| | Chrome | 36 860 662-00 |
| | Dark Chrome | 36 860 662-19 |
| | Light Gold | 36 860 662-26 |
| | Brushed Light Gold | 36 860 662-27 |
| | Matte Black | 36 860 662-33 |
| | Brushed Dark Brass | 36 860 662-39 |
| | Brushed Bronze | 36 860 662-42 |
| | Brushed Champagne (22kt Gold) | 36 860 662-46 |
| | Champagne (22kt Gold) | 36 860 662-47 |
| | Brushed Chrome | 36 860 662-93 |
| | Brushed Dark Platinum | 36 860 662-99 |

Required miscellaneous



- Concealed wall-mounted single-lever mixer -** 35 860 970 90
- max. recess depth 95 mm
 - min. recess depth 80 mm
 - mixer can be placed above, to the left or to the right of the spout.

Required miscellaneous

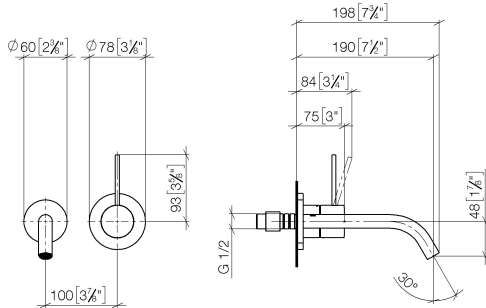


- Concealed wall-mounted single-lever mixer mixer on right -** 35 816 970 90
- NOTE: Not suitable for concealed installation. Connection by means of angle valves, mounted with screws to back wall.

META META SLIM Wall-mounted single-lever basin mixer without pop-up waste - Brushed Platinum

META

36 860 662 Product version up to 9/1/2021
mm [inches]



Flow rate chart



Trajectory diagram



Codes & Standards

DIN 4109

EN 817

ISO 3822

Ü-Zeichen



META META SLIM Wall-mounted single-lever basin mixer without pop-up waste - Brushed Platinum

META

36 860 662 Product version up to 9/1/2021

Certificates and sustainability

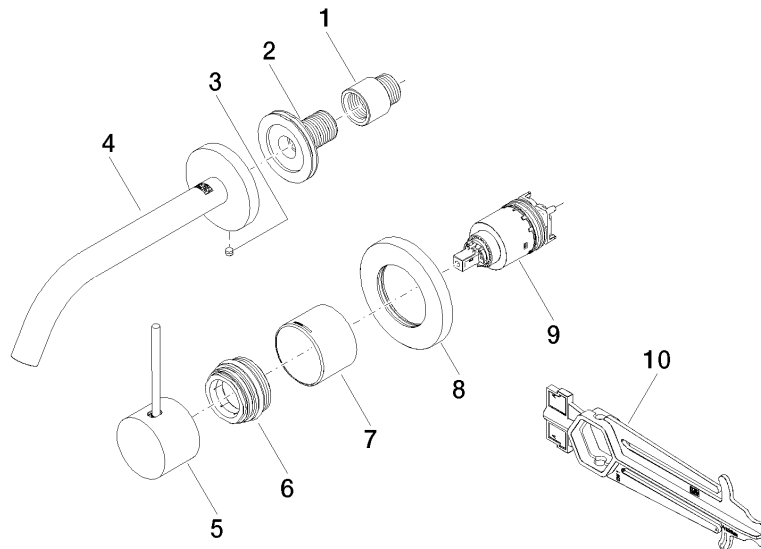
DVGW_DW-
6512DN0

LGA_29

META META SLIM Wall-mounted single-lever basin mixer without pop-up waste - Brushed Platinum

META

36 860 662 Product version up to 9/1/2021



Spare parts list

| No. | Item Number | Name | Quantity used | Delivery time |
|-----|--------------------|--------------------|---------------|---------------|
| 8 | 90 27 62 011 00-06 | rosette | 1.00 | 10 |
| 9 | 90 15 05 064 01 90 | cartridge | 1.00 | 2 |
| 7 | 09 11 02 334-06 | cover | 1.00 | 10 |
| 6 | 90 24 04 537 00 90 | threaded connector | 1.00 | 2 |
| 3 | 09 31 11 112 90 | pin | 1.00 | 60 |
| 1 | 09 24 03 072 10 90 | nipple | 1.00 | 2 |
| 5 | 90 20 66 022 00-06 | handle | 1.00 | 10 |
| 2 | 90 24 03 280 00 90 | nipple | 1.00 | 2 |
| 4 | 90 28 22 323 00-06 | spout | 1.00 | 10 |
| 10 | 90 30 09 064 00 90 | key | 1.00 | 2 |