

**META META PURE Wall-mounted single-lever basin mixer without pop-up waste - Dark Chrome**

36 860 664



- 190mm projection
- fixed spout
- circular, air-enriched flow
- hole diameter spout 37 mm
- hole diameter single-lever mixer 57 mm
- rosette for spout Ø 55mm
- rosette for mixer Ø 78mm
- max. flow 5.7 l/min
- lead-free
- This product can help a building meet the requirements of Green Building Rating Systems, e.g. LEED®, BREEAM®, DGNB
- WRAS

	Dark Chrome	36 860 664-19
	Chrome	36 860 664-00
	Brushed Platinum	36 860 664-06
	Light Gold	36 860 664-26
	Brushed Light Gold	36 860 664-27
	Matte Black	36 860 664-33
	Brushed Bronze	36 860 664-42
	Brushed Champagne (22kt Gold)	36 860 664-46
	Champagne (22kt Gold)	36 860 664-47
	Brushed Chrome	36 860 664-93
	Brushed Dark Platinum	36 860 664-99

**Required miscellaneous**



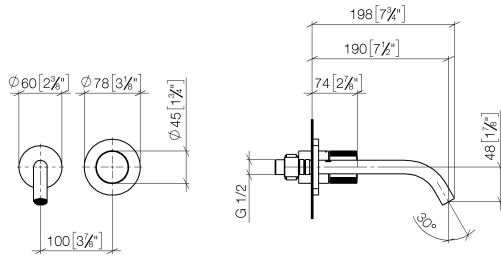
**Concealed wall-mounted single-lever mixer -** 35 860 970 90

- max. recess depth mm
- min. recess depth mm
- mixer can be placed above, to the left or to the right of the spout.

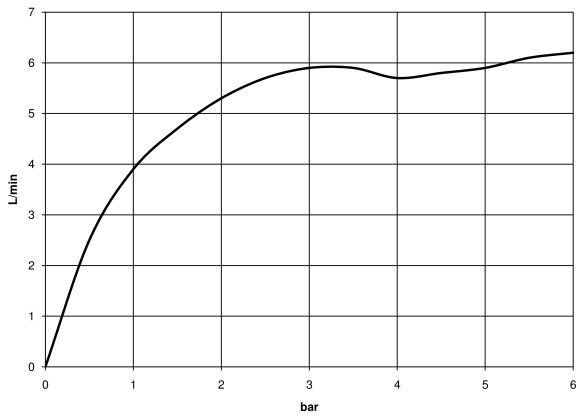


# META META PURE Wall-mounted single-lever basin mixer without pop-up waste - Dark Chrome

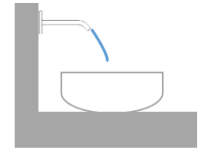
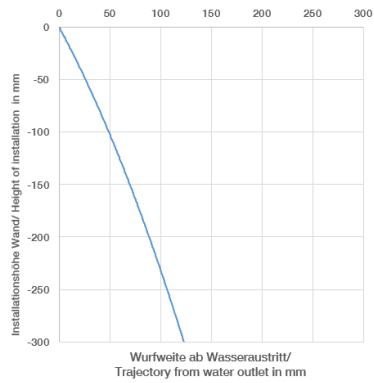
36 860 664  
mm [inches]



### Flow rate chart



### Trajectory diagram



### Codes & Standards

DIN 4109

EN 817

ISO 3822

Ü-Zeichen



META META PURE Wall-mounted single-lever basin mixer without pop-up  
waste - Dark Chrome

---

36 860 664

Certificates

---

DVGW\_DW-  
6512DN0

LGA\_29

META META PURE Wall-mounted single-lever basin mixer without pop-up  
waste - Dark Chrome

---

36 860 664

