

LISSE Wall-mounted single-lever basin mixer without pop-up waste - Matte Black

LISSE

|            |   |  |  |
|------------|---|--|--|
| 36 860 845 | Product version up to 4/1/2024  |  |  |
|            | <ul style="list-style-type: none"> <li>170mm projection</li> <li>fixed spout</li> <li>circular, air-enriched flow</li> <li>hole diameter spout 37 mm</li> <li>hole diameter single-lever mixer 57 mm</li> <li>rosette 78 x 78 mm</li> <li>max. flow 5.7 l/min</li> <li>lead-free</li> <li>This product can help a building meet the requirements of Green Building Rating Systems, e.g. LEED®, BREEAM®, DGNB</li> <li>WRAS</li> </ul> | <div> <div></div> <div>Matte Black</div> <div>36 860 845-33</div> </div> <div> <div></div> <div>Chrome</div> <div>36 860 845-00</div> </div> <div> <div></div> <div>Brushed Platinum</div> <div>36 860 845-06</div> </div> <div> <div></div> <div>Dark Chrome</div> <div>36 860 845-19</div> </div> <div> <div></div> <div>Brushed Light Gold</div> <div>36 860 845-27</div> </div> <div> <div></div> <div>Brushed Chrome</div> <div>36 860 845-93</div> </div> <div> <div></div> <div>Brushed Dark Platinum</div> <div>36 860 845-99</div> </div> |  |

Required miscellaneous

|  |   |
|--|---|
|  | <div> <div></div> <div>Concealed wall-mounted single-lever mixer -</div> <div>35 860 970 90</div> </div> <ul style="list-style-type: none"> <li>max. recess depth 95 mm</li> <li>min. recess depth 80 mm</li> <li>mixer can be placed above, to the left or to the right of the spout.</li> </ul> |
|--|---|

Required miscellaneous

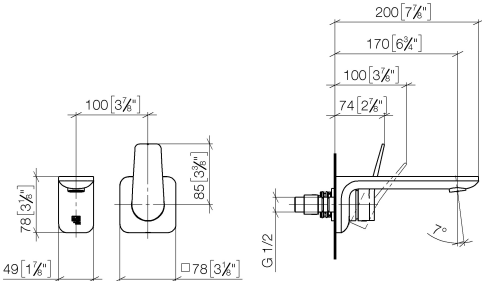
|  |   |
|--|---|
|  | <div> <div></div> <div>Concealed wall-mounted single-lever mixer mixer on right -</div> <div>35 816 970 90</div> </div> <ul style="list-style-type: none"> <li>NOTE:Not suitable for concealed installation.Connection by means of angle valves, mounted with screws to back wall.</li> </ul> |
|--|---|



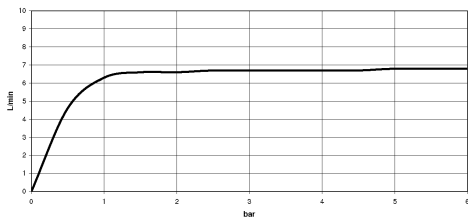
LISSE Wall-mounted single-lever basin mixer without pop-up waste - Matte Black

LISSE

36 860 845 Product version up to 4/1/2024  
mm [inches]



Flow rate chart



Codes & Standards

|                |       |                        |                             |
|----------------|-------|------------------------|-----------------------------|
| ASME A112.18.1 | cUPC  | EN 817                 | EPA WaterSense              |
| NSF372         | NSF61 | Scottish Water Byelaws | UK Water Supply Regulations |

WaterSense





LISSE Wall-mounted single-lever basin mixer without pop-up waste - Matte Black

LISSE

36 860 845    Product version up to 4/1/2024

Certificates and sustainability

|              |                 |            |           |            |
|--------------|-----------------|------------|-----------|------------|
| IAPMO_N-4976 | DVGW_DW-6512DN0 | IAPMO_6397 | WRAS_2107 | IAPMO_8834 |
| IAPMO_4976 ( |                 |            |           |            |

# LISSE Wall-mounted single-lever basin mixer without pop-up waste - Matte Black

LISSE

36 860 845 Product version up to 4/1/2024



## Spare parts list

| No. | Item Number        | Name       | Quantity used | Delivery time |
|-----|--------------------|------------|---------------|---------------|
| 4   | 90 11 84 021 00-33 | spout      | 1.00          | 30            |
| 8   | 09 11 02 288-33    | cover      | 1.00          | 30            |
| 11  | 90 15 05 064 01 90 | cartridge  | 1.00          | 2             |
| 2   | 90 24 03 108 00 90 | nipple set | 1.00          | 2             |
| 7   | 09 20 84 021-33    | handle     | 1.00          | 30            |
| 5   | 90 31 20 087 00-33 | plug       | 1.00          | 30            |
| 1   | 09 24 03 072 10 90 | nipple     | 1.00          | 2             |
| 10  | 90 14 10 049 00 90 | seal       | 1.00          | 2             |
| 12  | 90 30 09 064 00 90 | key        | 1.00          | 2             |
| 3   | 90 31 11 004 00 90 | pin        | 1.00          | 2             |
| 6   | 90 31 11 063 00 90 | pin        | 1.00          | 2             |
| 9   | 90 27 84 020 00-33 | rosette    | 1.00          | 30            |