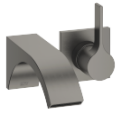



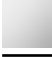
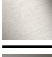


CYO Wall-mounted single-lever basin mixer without pop-up waste - Brushed Dark Platinum

CYO

36 861 811



- 190mm projection
- fixed spout
- rectangular, air-enriched flow
- hole diameter spout 37 mm
- hole diameter single-lever mixer 57 mm
- rosette for mixer 80 x 80mm
- max. flow 4.5 l/min
- lead-free
- This product can help a building meet the requirements of Green Building Rating Systems, e.g. LEED®, BREEAM®, DGNB
- WRAS

	Brushed Dark Platinum	36 861 811-99
	Chrome	36 861 811-00
	Brushed Platinum	36 861 811-06
	Dark Chrome	36 861 811-19
	Brushed Durabronze (23kt Gold)	36 861 811-28

Required miscellaneous



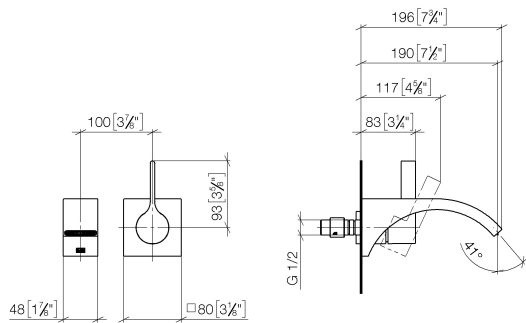
Concealed wall-mounted single-lever mixer - 35 860 970 90

- max. recess depth 95 mm
- min. recess depth 80 mm
- mixer can be placed above, to the left or to the right of the spout.

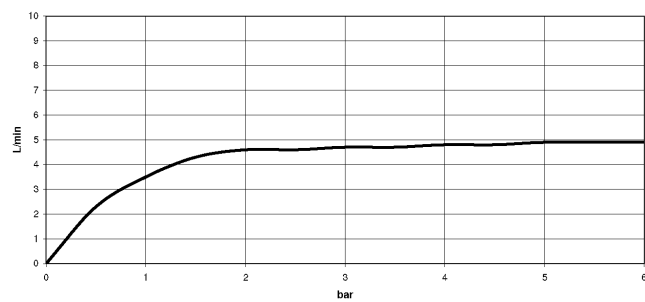
CYO Wall-mounted single-lever basin mixer without pop-up waste - Brushed Dark Platinum

CYO


36 861 811
mm [inches]



Flow rate chart



Codes & Standards

ASME A112.18.1	cUPC	DIN 4109	EPA WaterSense
ISO 3822	NSF372	NSF61	Scottish Water Byelaws
UK Water Supply Regulations	Ü-Zeichen	WaterSense	

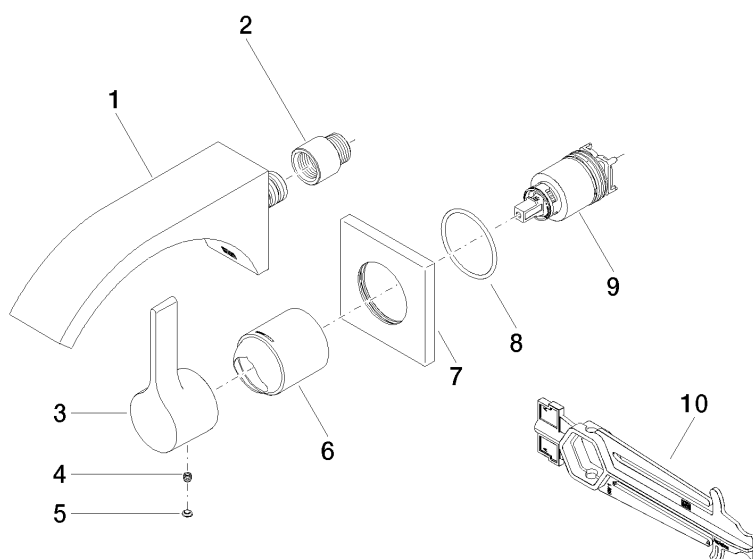


CYO Wall-mounted single-lever basin mixer without pop-up waste - Brushed Dark Platinum

CYO

36 861 811				
Certificates and sustainability				
IAPMO_N-4976	WRAS_2107	IAPMO_6397	LGA_38	IAPMO_4976 (
IAPMO_8834				

36 861 811



Spare parts list

No.	Item Number	Name	Quantity used	Delivery time
	2 09 24 03 072 10 90	nipple	1.00	2
	7 09 27 78 039-99	rosette	1.00	20
	6 09 11 02 288-99	cover	1.00	20
	5 90 31 20 087 00-99	plug	1.00	20
	9 90 15 05 064 01 90	cartridge	1.00	2
	3 09 20 80 021-99	handle	1.00	20
	1 13 805 811-99	CYO Wall-mounted basin spout without pop-up waste - Brushed Dark Platinum	1.00	20
	10 90 30 09 064 00 90	key	1.00	2
	8 90 14 10 049 00 90	seal	1.00	2
	4 90 31 11 030 00 90	pin	1.00	2