

## LISSÉ Wall-mounted single-lever basin mixer without pop-up waste - Chrome

LISSÉ

36 861 845 Product version from 4/1/2024



- 210mm projection
- fixed spout
- circular, air-enriched flow
- hole diameter spout 37 mm
- hole diameter single-lever mixer 57 mm
- rosette 78 x 78 mm
- max. flow 5.7 l/min
- lead-free
- This product can help a building meet the requirements of Green Building Rating Systems, e.g. LEED®, BREEAM®, DGNB
- WRAS

	Chrome	36 861 845-00
	Brushed Platinum	36 861 845-06
	Dark Chrome	36 861 845-19
	Brushed Light Gold	36 861 845-27
	Matte Black	36 861 845-33
	Brushed Chrome	36 861 845-93
	Brushed Dark Platinum	36 861 845-99

### Required miscellaneous



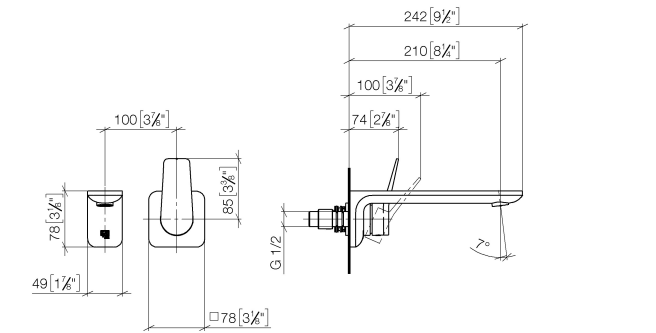
- Concealed wall-mounted single-lever mixer -** 35 860 970 90
- max. recess depth 95 mm
  - min. recess depth 80 mm
  - mixer can be placed above, to the left or to the right of the spout.

### Required miscellaneous

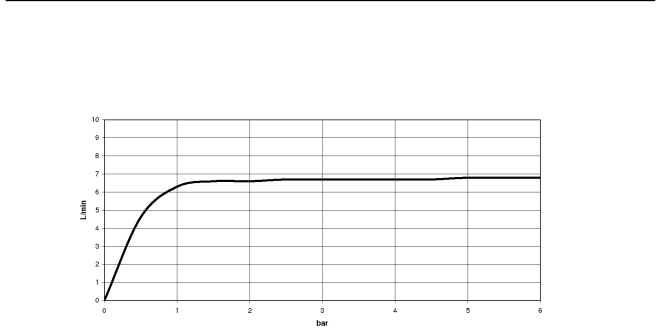


- Concealed wall-mounted single-lever mixer mixer on right -** 35 816 970 90
- NOTE: Not suitable for concealed installation. Connection by means of angle valves, mounted with screws to back wall.

mm [inches]



Flow rate chart



Codes & Standards

ASME A112.18.1	cUPC	DIN 4109	EN 817
EPA WaterSense	ISO 3822	NSF372	NSF61
Scottish Water Byelaws	UK Water Supply Regulations	Ü-Zeichen	WaterSense





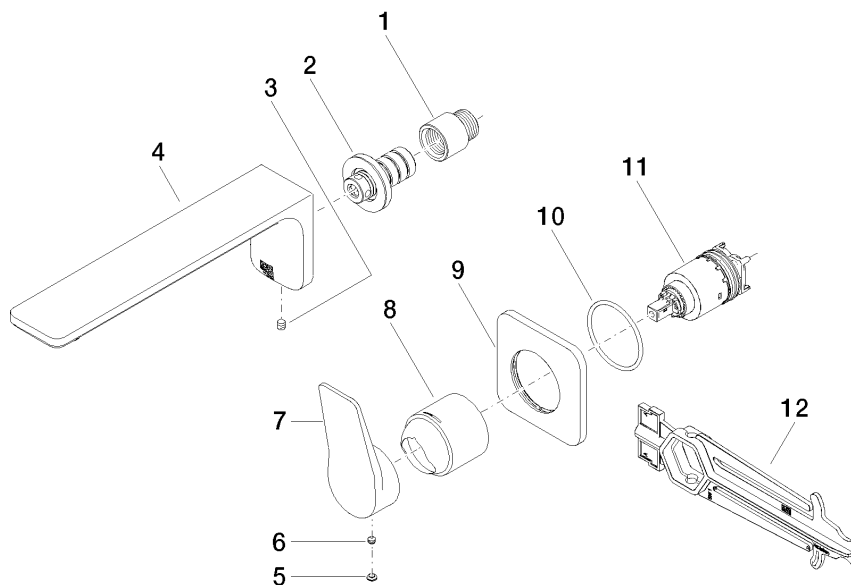
LISSE Wall-mounted single-lever basin mixer without pop-up waste - Chrome

LISSE

36 861 845 Product version from 4/1/2024

Certificates and sustainability

IAPMO_N-4976	DVGW_DW-6512DN0	IAPMO_6397	LGA_29	WRAS_2107
IAPMO_4976 (	IAPMO_8834			



## Spare parts list

No.	Item Number	Name	Quantity used	Delivery time
4	90 11 84 023 00-00	spout	1.00	10
7	09 20 84 021-00	handle	1.00	10
1	09 24 03 072 10 90	nipple	1.00	2
2	90 24 03 108 00 90	nipple set	1.00	2
11	90 15 05 064 01 90	cartridge	1.00	2
5	90 31 20 087 00-00	plug	1.00	10
8	09 11 02 288-00	cover	1.00	10
10	90 14 10 049 00 90	seal	1.00	2
12	90 30 09 064 00 90	key	1.00	2
6	90 31 11 063 00 90	pin	1.00	2
3	90 31 11 004 00 90	pin	1.00	2
9	90 27 84 020 00-00	rosette	1.00	10