

42 765 970 90 Product version from 3/12/2018 to 4/29/2019



- automatic hygiene flush
- suitable for thermal disinfection
- adjustable follow-up time
- high-frequency sensors with self-calibration
- magnetic valve
- temperature setting via thermostat
- 100-240 V AC / 12 V DC, 50-60 Hz, 18 W power supply unit, incl. country-specific adapter set
- WRAS

Cannot be combined with basins in conducting materials (e.g. steel, river stone).

Use with top-mounted basins is excluded.

Cannot be combined with basins that have a closing drain.

ATTENTION: Separate terms and conditions for electronic articles are applicable.

Cannot be combined with basins in conducting materials (e.g. steel, river stone).

Use with top-mounted basins is excluded.

Cannot be combined with basins that have a closing drain.

ATTENTION: Separate terms and conditions for electronic articles are applicable.

Required miscellaneous



eSET Touchfree Basin mixer with temperature setting for combining with wall-mounted fittings - 35 741 970 90

- max. recess depth 125 mm
- min. recess depth 90 mm

Required miscellaneous



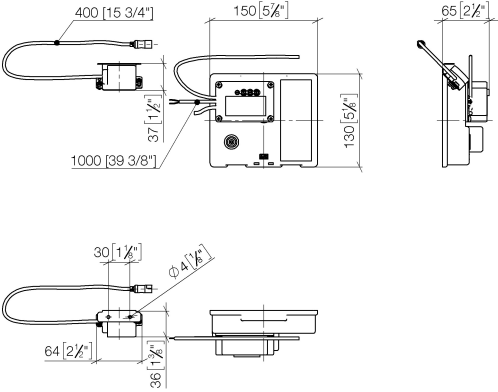
eSET Touchfree Basin mixer with temperature setting for combining with free-standing fittings - 35 740 970 90

Recommended miscellaneous

Extension for Touchfree 500 mm - 12 765 970 90

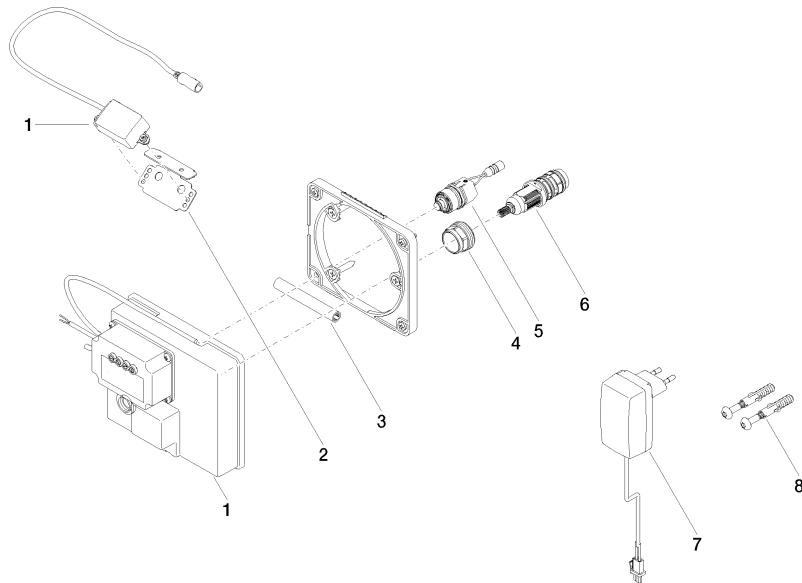
42 765 970 90 Product version from 3/12/2018 to 4/29/2019

mm [inches]



Codes & Standards			
CSA C22.2 No. 14	CSA C22.2 No. 68	DIN 4109	ISO 3822
Scottish Water Byelaws	UK Water Supply Regulations	UL 1951	Ü-Zeichen

Certificates and sustainability					
LGA_29	IAPMO_	CE000001_eSet_Tou	CE000002_eSet_Tou	LGA_29	
		chfree_20171206_D	chfree_20171206_E		
		E_sig	N_sig		
WRAS_250302					



Spare parts list

No.	Item Number	Name	Quantity used	Delivery time
5	04 30 50 079 00 90	valve	1.00	2
6	90 15 02 013 00 90	cartridge	1.00	2
8	04 30 31 024 01 90	fixing set	1.00	2
2	90 17 20 199 00 90	holder	1.00	2
1	90 10 01 177 00 90	electronic accessories	1.00	2
4	09 23 10 129 90	nut	1.00	2
7	04 10 01 246 00 90	electronic accessories	1.00	2
3	90 23 01 124 00 90	sleeve	1.00	2