

ST 060 100 1660

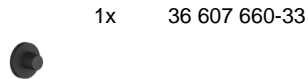
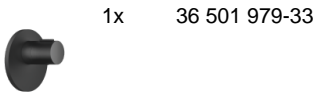


- cover plate Ø 124 mm
- rosette Ø 60 mm
- temperature control handle with safety limit stop at 38°C
- thermostat cartridge
- head part with cut-to-length spindle and sleeve

	Matte Black	ST 060 100 1660-33
	Chrome	ST 060 100 1660-00
	Brushed Platinum	ST 060 100 1660-06
	Dark Chrome	ST 060 100 1660-19
	Light Gold	ST 060 100 1660-26
	Brushed Light Gold	ST 060 100 1660-27
	Brushed Bronze	ST 060 100 1660-42
	Brushed Chrome	ST 060 100 1660-93
	Brushed Dark Platinum	ST 060 100 1660-99

Individual components of this set

You need the following components for this set



ST 060 100 1660



- cover plate Ø 124 mm
- temperature control handle with safety limit stop at 38°C
- thermostat cartridge
- WRAS 2011026

	Matte Black	36 501 979-33
	Chrome	36 501 979-00
	Brushed Platinum	36 501 979-06
	Platinum	36 501 979-08
	Durabronze (23kt Gold)	36 501 979-09
	Dark Chrome	36 501 979-19
	Light Gold	36 501 979-26
	Brushed Light Gold	36 501 979-27
	Brushed Durabronze (23kt Gold)	36 501 979-28
	Brushed Bronze	36 501 979-42
	Brushed Champagne (22kt Gold)	36 501 979-46
	Champagne (22kt Gold)	36 501 979-47
	Brushed Chrome	36 501 979-93
	Brushed Dark Platinum	36 501 979-99

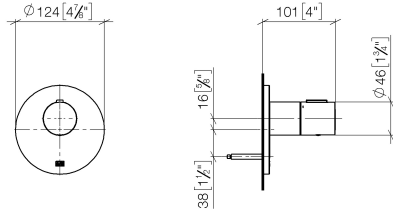
Required miscellaneous



- xTOOL Concealed thermostat module without volume control -** 35 503 970 90
- max. recess depth 110 mm
 - min. recess depth 85 mm

ST 060 100 1660

mm [inches]



Certificates

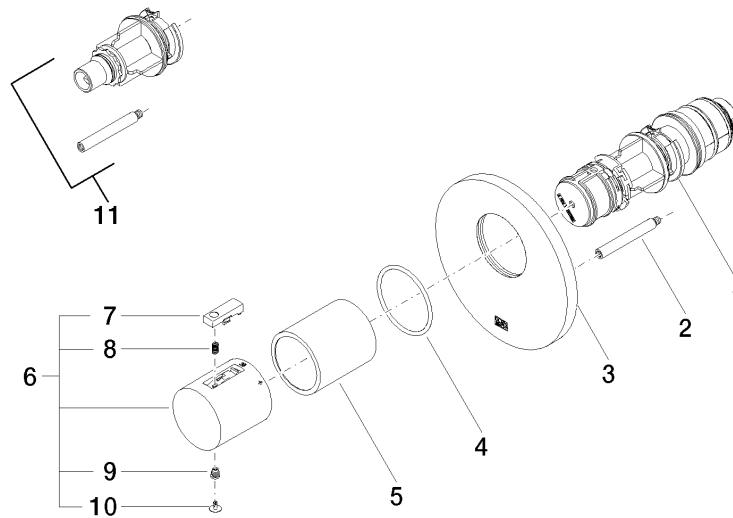
WRAS_2011026.

DVGW_DW-
6512DN0706.

LGA_29930.

LGA_29932.

ST 060 100 1660



Spare parts list

No.	Item Number	Name	Quantity used	Delivery time
1	90 15 05 065 00 90	cartridge	1	2
2	90 31 09 095 00 90	bar	1	2
3	09 11 02 162-33	cover	1	60
4	90 14 10 049 00 90	seal	1	2
5	90 21 02 112 00-33	sleeve	1	30
6	90 17 33 004 00-33	handle	1	30
7	90 21 33 011 00-13	handle	1	2
8	90 16 02 027 00 90	spring	1	2
9	90 30 30 136 00 90	screw	1	2
10	90 31 20 049 00-13	plug	1	30
11	12 178 970 90	Extension 46 mm -	1	2


ST 060 100 1660



- rosette Ø 60 mm
- head part with cut-to-length spindle and sleeve

	Matte Black	36 607 660-33
	Chrome	36 607 660-00
	Brushed Platinum	36 607 660-06
	Platinum	36 607 660-08
	Dark Chrome	36 607 660-19
	Light Gold	36 607 660-26
	Brushed Light Gold	36 607 660-27
	Brushed Bronze	36 607 660-42
	Brushed Champagne (22kt Gold)	36 607 660-46
	Champagne (22kt Gold)	36 607 660-47
	Brushed Chrome	36 607 660-93
	Brushed Dark Platinum	36 607 660-99

Required miscellaneous

	Wall valve 1/2" - •min. recess depth 75 mm •max. recess depth 145 mm	35 607 970 90
---	---	---------------

ST 060 100 1660

