

ST 060 111 3980

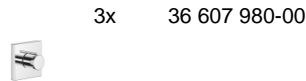
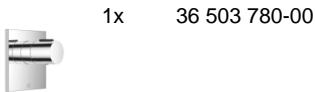


- cover plate 120 x 120 mm
- rosette 60 x 60 mm
- temperature control handle with safety limit stop at 38°C
- thermostat cartridge
- 3x head part with cut-to-length spindle and sleeve

	Chrome	ST 060 111 3980-00
	Brushed Platinum	ST 060 111 3980-06
	Platinum	ST 060 111 3980-08
	Dark Chrome	ST 060 111 3980-19
	Brushed Light Gold	ST 060 111 3980-27
	Brushed Durabronze (23kt Gold)	ST 060 111 3980-28
	Matte Black	ST 060 111 3980-33
	Brushed Chrome	ST 060 111 3980-93
	Brushed Dark Platinum	ST 060 111 3980-99

**Individual components of this set**

You need the following components for this set





## IMO xTOOL Thermostat module with 3 valves - Chrome

---

IMO

ST 060 111 3980

ST 060 111 3980



- cover plate 120 x 120 mm
- temperature control handle with safety limit stop at 38°C
- thermostat cartridge
- WRAS 2011026

Fits: IMO, MEM, CL.1, CYO

	Chrome	36 503 780-00
	Brushed Platinum	36 503 780-06
	Platinum	36 503 780-08
	Dark Chrome	36 503 780-19
	Brushed Light Gold	36 503 780-27
	Brushed Durabronze (23kt Gold)	36 503 780-28
	Matte Black	36 503 780-33
	Brushed Champagne (22kt Gold)	36 503 780-46
	Champagne (22kt Gold)	36 503 780-47
	Brushed Chrome	36 503 780-93
	Brushed Dark Platinum	36 503 780-99

**Required miscellaneous**



**xTOOL Concealed thermostat module without volume control -** 35 503 970 90  
 •max. recess depth 155 mm  
 •min. recess depth 115 mm

**Recommended miscellaneous**



**xGRID Attachment set for integrating in the dry wall construction -** 12 340 970 90

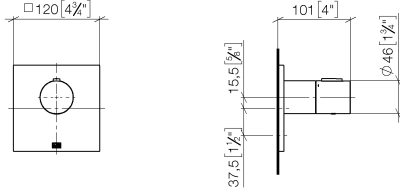
**Required miscellaneous**



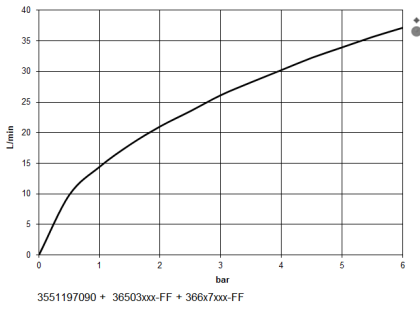
**xGRID Installation track 555 mm -** 12 360 970 90

ST 060 111 3980

mm [inches]



**Flow rate chart**



**Certificates**

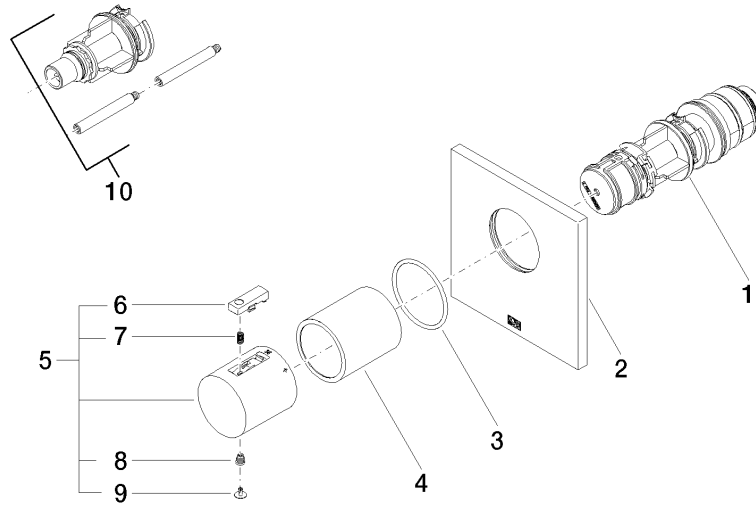
WRAS\_2011026.

DVGW\_DW-  
6512DN0706.

LGA\_29930.

LGA\_29932.

ST 060 111 3980



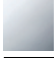








**Spare parts list**

No.	Item Number	Name	Quantity used	Delivery time
1	90 15 02 063 00 90	cartridge	1	2
2	09 11 02 196-00	cover	1	60
3	90 14 10 049 00 90	seal	1	2
4	90 21 02 112 00-00	sleeve	1	10
5	90 17 33 004 00-00	handle	1	10
6	90 21 33 011 00-13	handle	1	2
7	90 16 02 027 00 90	spring	1	2
8	90 30 30 136 00 90	screw	1	2
9	90 31 20 049 00-00	plug	1	10
10	12 178 970 90	Extension 46 mm -	1	2


ST 060 111 3980



- rosette 60 x 60 mm
- head part with cut-to-length spindle and sleeve
- WRAS 2011026, 2010066

	Chrome	36 607 980-00
	Brushed Platinum	36 607 980-06
	Platinum	36 607 980-08
	Dark Chrome	36 607 980-19
	Brushed Light Gold	36 607 980-27
	Brushed Durabronze (23kt Gold)	36 607 980-28
	Matte Black	36 607 980-33
	Brushed Chrome	36 607 980-93
	Brushed Dark Platinum	36 607 980-99

**Required miscellaneous**

	<b>Wall valve 1/2" -</b> <ul style="list-style-type: none"> <li>• max. recess depth 145 mm</li> <li>• min. recess depth 75 mm</li> </ul>	35 607 970 90
---	---	---------------



## IMO xTOOL Thermostat module with 3 valves - Chrome

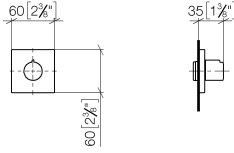
---

IMO

ST 060 111 3980

ST 060 111 3980

mm [inches]



Certificates

DVGW\_DW-  
6501DN0116.

WRAS\_2011026.

IAPMO\_4976 (1).

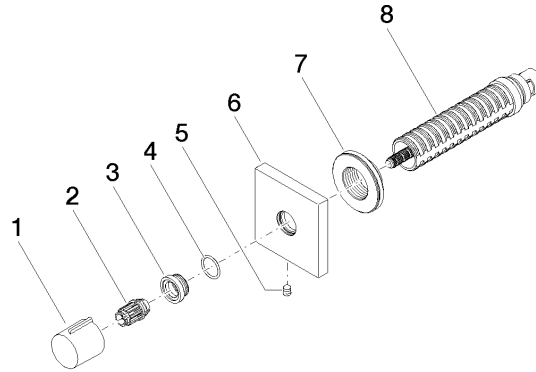
LGA\_29931.

WRAS\_2010066.

DVGW\_DW-  
6512DN0706.

LGA\_29932.





### Spare parts list

No.	Item Number	Name	Quantity used	Delivery time
1	09 20 98 001-00	handle	1	10
2	09 12 12 005 90	fixing cap	1	2
3	09 12 12 043-00	base	1	10
4	09 14 10 017 90	seal	1	2
5	90 31 11 004 00 90	pin	1	2
6	09 27 98 014-00	rosette	1	10
7	09 21 02 151 90	sleeve	1	2
8	90 90 03 202 00 90	top	1	2