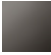
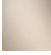




CL.1 Rubinetto laterale chiusura senso antiorario acqua calda - Platinato spazzolato

CL.1

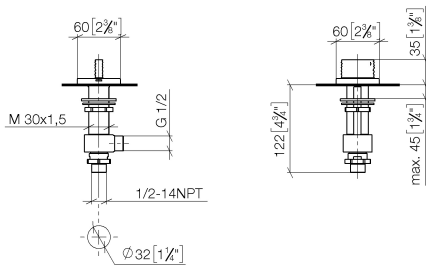
20 001 706	<ul style="list-style-type: none"> <li>• con struttura a ONDE</li> <li>• diametro foro 32 mm</li> <li>• rosetta 60 x 60 mm</li> <li>• con contrassegno caldo</li> </ul>	<div>  <div>Platinato spazzolato</div> </div> <div>20 001 706-06</div>
		<div>  <div>Cromato</div> </div> <div>20 001 706-00</div>
		<div>  <div>Dark Chrome</div> </div> <div>20 001 706-19</div>
		<div>  <div>Champagne spazzolato (Oro 22k)</div> </div> <div>20 001 706-46</div>
		<div>  <div>Champagne (Oro 22k)</div> </div> <div>20 001 706-47</div>
		<div>  <div>Dark Platinum spazzolato</div> </div> <div>20 001 706-99</div>



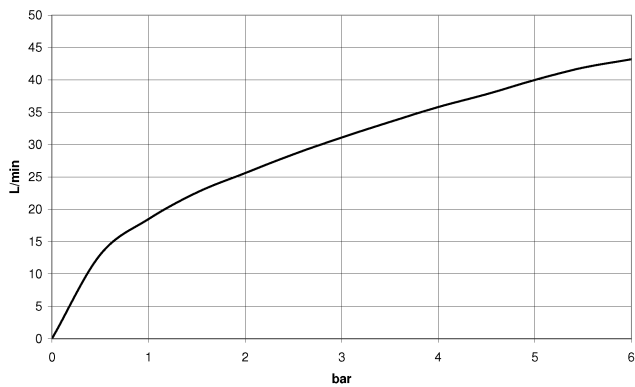
## CL.1 Rubinetto laterale chiusura senso antiorario acqua calda - Platinato spazzolato

CL.1

20 001 706  
mm [inches]



### Diagramma di portata



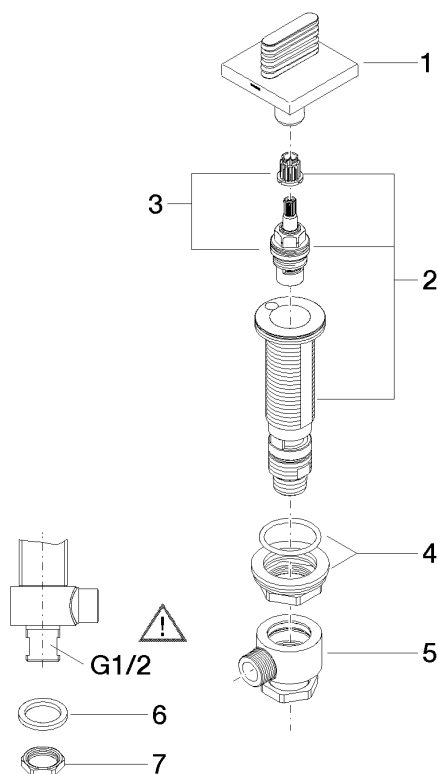
### Certificati

IAPMO\_4976 (5).    WRAS\_2103001.    LGA\_28688.

## CL.1 Rubinetto laterale chiusura senso antiorario acqua calda - Platinato spazzolato

CL.1

20 001 706  
Parts for other  
finishes can be found  
here: Cromato



### Elenco delle parti di ricambio

N.	Codice articolo	Denominazione	Quantità necessaria	Tempo di produzione
1	90 20 70 055 05-06	manopola ( hot )	1	10
2	04 17 11 058 32 90	parte laterale	1	2
3	90 90 03 132 00 90	parte superiore	1	2
4	04 23 10 032 78 90	set di fissaggio	1	2
5	04 17 11 023 10 90	distributore	1	2
6	90 23 30 040 00-06	giunto a vite	1	10
7	09 30 11 059 90	rondella	1	2
8	09 23 10 012 90	dado	1	2