

Basin Waste with push fastening 1 1/4" - Matte Black

SERIES-VARIOUS

10 125 970 Product version from 10/1/2023



| | | |
|---|---|---------------|
|  | Matte Black | 10 125 970-33 |
|  | Chrome | 10 125 970-00 |
|  | Brushed Platinum | 10 125 970-06 |
|  | Platinum | 10 125 970-08 |
|  | Durabrand (23kt Gold) | 10 125 970-09 |
|  | Dark Chrome | 10 125 970-19 |
|  | Light Gold | 10 125 970-26 |
|  | Brushed Light Gold | 10 125 970-27 |
|  | Brushed Durabrand (23kt Gold) | 10 125 970-28 |
|  | Platinum / Brushed Platinum | 10 125 970-36 |
|  | Durabrand / Brushed Durabrand (23kt Gold) | 10 125 970-38 |
|  | Brushed Bronze | 10 125 970-42 |
|  | Brushed Champagne (22kt Gold) | 10 125 970-46 |
|  | Champagne (22kt Gold) | 10 125 970-47 |
|  | Brushed Chrome | 10 125 970-93 |
|  | Brushed Dark Platinum | 10 125 970-99 |



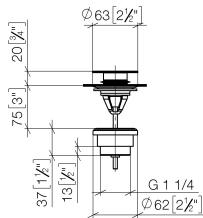
Basin Waste with push fastening 1 1/4" - Matte Black

SERIES-VARIOUS

10 125 970 Product version from 10/1/2023

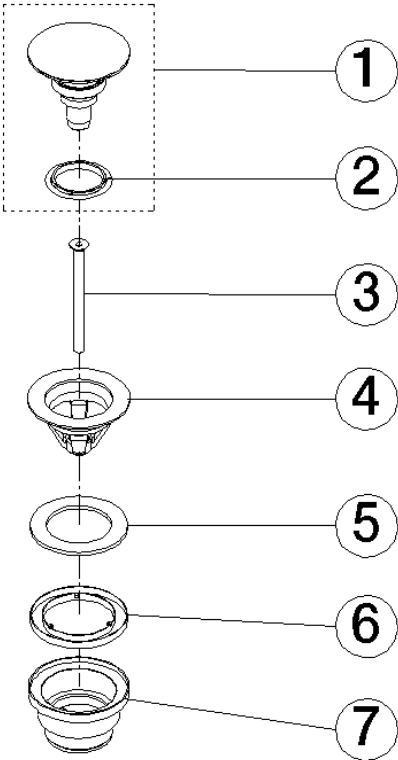
Only suitable for basins with an overflow.

mm [inches]



10 125 970 Product version from 10/1/2023

Parts for other
finishes can be found
here: [Chrome](#)



Spare parts list

| No. | Item Number | Name | Quantity used | Delivery time |
|-----|--------------------|------------|---------------|---------------|
| 1 | 04 31 20 096 00-33 | plug | 1.00 | 30 |
| 3 | 09 30 30 179 90 | screw | 1.00 | 2 |
| 2 | 90 14 03 152 00 90 | seal | 1.00 | 2 |
| 6 | 09 14 03 153 90 | seal | 1.00 | 2 |
| 4 | 09 11 01 038-33 | cup | 1.00 | 30 |
| 5 | 09 14 05 061 90 | seal | 1.00 | 2 |
| 7 | 09 11 10 156-33 | connection | 1.00 | 60 |