



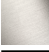

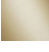

CL.1 Deck-mounted basin spout without pop-up waste - Brushed Dark Platinum

CL.1

13 714 705

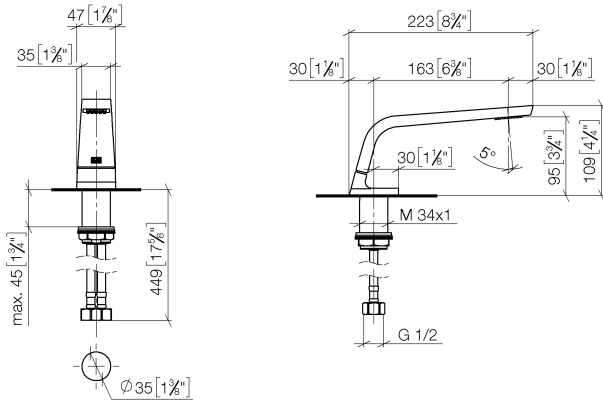


- 160mm projection
- fixed spout
- rectangular spray pattern with 40 individual jets
- height of mixer 108 mm
- height up to aerator 94 mm
- hole diameter 35 mm
- 2x screw-in M 10 x 1 pressure hose, leak-tested
- 1/2" connection
- max. flow 4 l/min
- lead-free
- This product can help a building meet the requirements of Green Building Rating Systems, e.g. LEED®, BREEAM®, DGNB
- WRAS 1512011

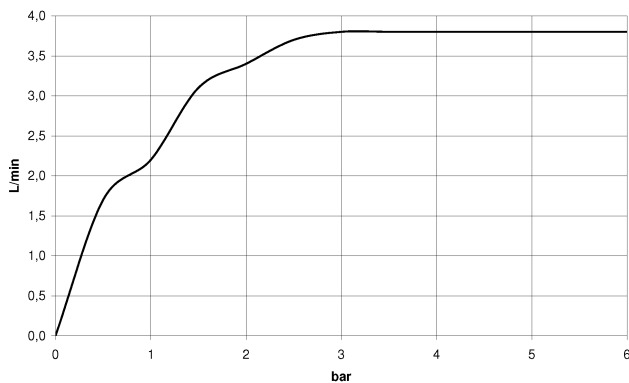
| | | |
|--|-------------------------------|---------------|
|  | Brushed Dark Platinum | 13 714 705-99 |
|  | Chrome | 13 714 705-00 |
|  | Brushed Platinum | 13 714 705-06 |
|  | Dark Chrome | 13 714 705-19 |
|  | Brushed Champagne (22kt Gold) | 13 714 705-46 |
|  | Champagne (22kt Gold) | 13 714 705-47 |

13 714 705


mm [inches]



Flow rate chart



Codes & Standards

| | | | |
|-----------------------------|--------------------------------|-----------|--|
| ASME A112.18.1 | cUPC | DIN 4109 | EPA WaterSense |
| Executive Order no. 1007 | ISO 3822 | NSF372 | NSF61 |
| Scottish Water Byelaws | UK Water Supply Regulations | Ü-Zeichen | WaterSense  |



CL.1 Deck-mounted basin spout without pop-up waste - Brushed Dark Platinum

CL.1

13 714 705

Certificates

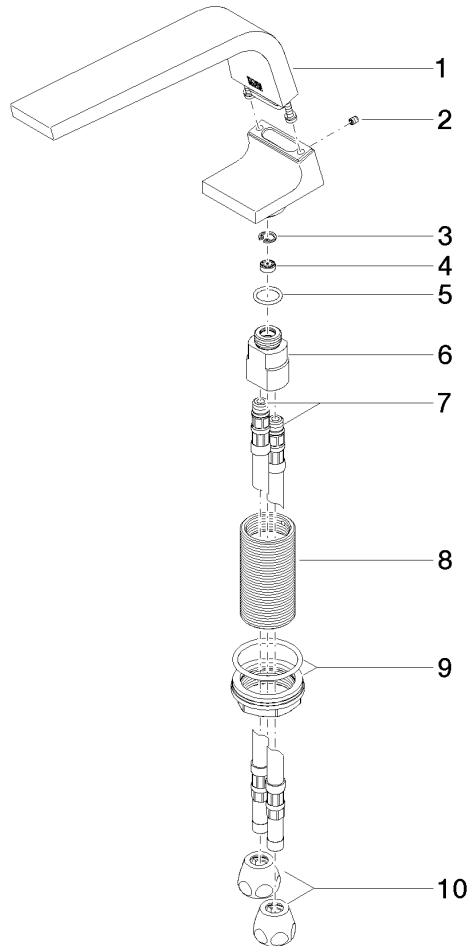
| | | | | |
|---------|------------|----------|-----------|------------|
| LGA_28 | IAPMO_4976 | GDV_0400 | IAPMO_N-4 | IAPMO_8834 |
| IAPMO_6 | WRAS_1512 | | | |

13 714 705

Product version from 6/15/2021

Product version from 7/1/2021 to 6/15/2021

Parts for other
finishes can be found
here: [Chrome](#)





CL.1 Deck-mounted basin spout without pop-up waste - Brushed Dark Platinum

CL.1

13 714 705

Spare parts list

Product version from 6/15/2021

Product version from 7/1/2021 to 6/15/2021

| No. | Item Number | Name | Quantity used | Delivery time |
|-----|--------------------|-------|---------------|---------------|
| | 90 11 70 002 00-99 | spout | 12 | 30 |