

VAIA Three-hole bridge mixer Pull-down with spray function - Brushed Durabronz (23kt Gold)

VAIA

19 875 809 Product version from 7/1/2023



- 240mm projection
- pivotable spout 360°
- Optional swivel limiter available with swivel limiter set 12 823 970 90
- air-enriched flow and spray flow
- 1800 mm metal shower hose
- sprayface with anti-scaling system
- max. flow 8 l/min at 3 bar flow pressure
- lead-free
- Flow modes can be changed while the water is running
- This product can help a building meet the requirements of Green Building Rating Systems, e.g. LEED®, BREEAM®, DGNB

Intrinsic protection against back flow.

| | | |
|--|-------------------------------|---------------|
| | Brushed Durabronz (23kt Gold) | 19 875 809-28 |
| | Chrome | 19 875 809-00 |
| | Brushed Platinum | 19 875 809-06 |
| | Platinum | 19 875 809-08 |
| | Durabronz (23kt Gold) | 19 875 809-09 |
| | Dark Chrome | 19 875 809-19 |
| | Matte Black | 19 875 809-33 |
| | Brushed Bronze | 19 875 809-42 |
| | Brushed Champagne (22kt Gold) | 19 875 809-46 |
| | Champagne (22kt Gold) | 19 875 809-47 |
| | Brushed Chrome | 19 875 809-93 |
| | Brushed Dark Platinum | 19 875 809-99 |

Recommended miscellaneous

Swivel limitation set -

12 823 970 90



Recommended miscellaneous

**VAIA Dispenser with rosette -
Brushed Durabronz (23kt Gold)**

82 434 809-28

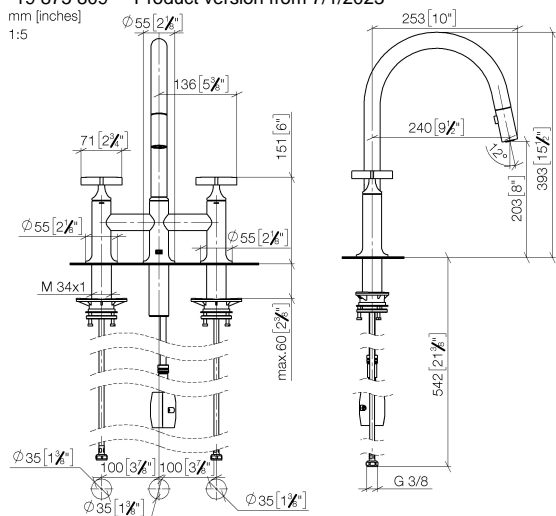


VAIA Three-hole bridge mixer Pull-down with spray function - Brushed Durabron (23kt Gold)

VAIA

19 875 809 Product version from 7/1/2023

mm [inches]
1:5



Flow rate chart



Codes & Standards

DIN 4109

EN 1717

ISO 3822

Ü-Zeichen



VAIA Three-hole bridge mixer Pull-down with spray function - Brushed Durabross (23kt Gold)

VAIA

19 875 809 Product version from 7/1/2023

Certificates and sustainability

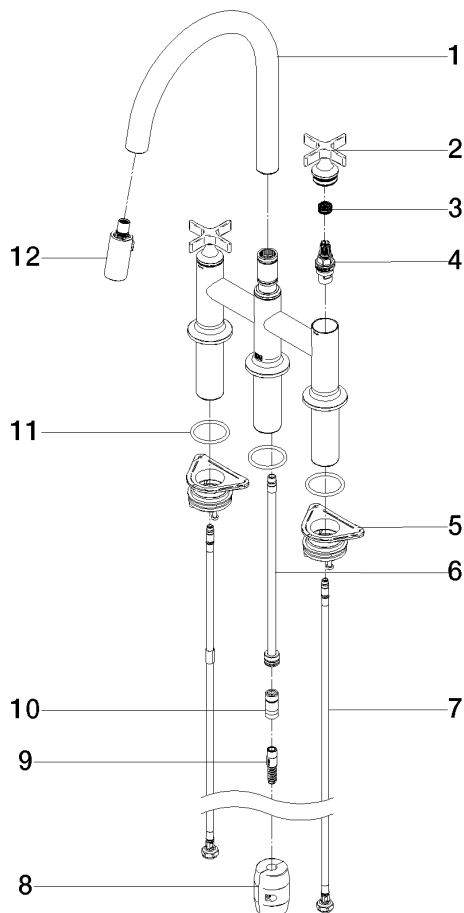
LGA_38

Belgaqua_24-005-2

VAIA Three-hole bridge mixer Pull-down with spray function - Brushed Durabronz (23kt Gold)

VAIA

19 875 809 Product version from 7/1/2023



Spare parts list

| No. | Item Number | Name | Quantity used | Delivery time |
|--|--------------------|-------------|---------------|---------------|
| 5 | 04 30 11 040 00 90 | fixing set | 2.00 | 2 |
| 8 | 04 21 50 010 00 90 | accessories | 1.00 | 2 |
| 2 | 90 20 80 036 00-28 | handle | 2.00 | 20 |
| 4 | 90 90 03 131 00 90 | top | 2.00 | 2 |
| 3 | 90 12 12 232 00 90 | fixing cap | 2.00 | 2 |
| 1 | 90 28 22 397 00-28 | spout | 1.00 | 20 |
| 10 | 90 24 03 253 00 90 | adaptor | 1.00 | 2 |
| 11 | 90 14 10 043 00 90 | seal | 3.00 | 2 |
| 7 | 04 30 04 100 00 90 | hose | 2.00 | 2 |
| 9 | 04 30 02 120 00-28 | hose | 1.00 | - |
| Spare part can no longer be ordered, please order the replacement item | | | | |
| 6 | 04 28 20 066 00 90 | pipe | 1.00 | 2 |
| 12 | 90 18 40 317 00-28 | shower | 1.00 | 20 |