

## MADISON Deck valve clockwise closing cold or hot - Platinum

---

20 000 360

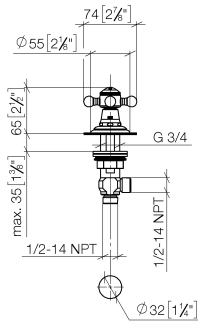


- hole diameter 32 mm
- rosette Ø 55 mm
- supplied with porcelain inserts for both HOT and COLD
- WRAS

**MADISON Deck valve clockwise closing cold or hot - Platinum**

20 000 360

mm [inches]



**Flow rate chart**



**Codes & Standards**

Scottish Water  
Byelaws

UK Water Supply  
Regulations



## MADISON Deck valve clockwise closing cold or hot - Platinum

---

20 000 360

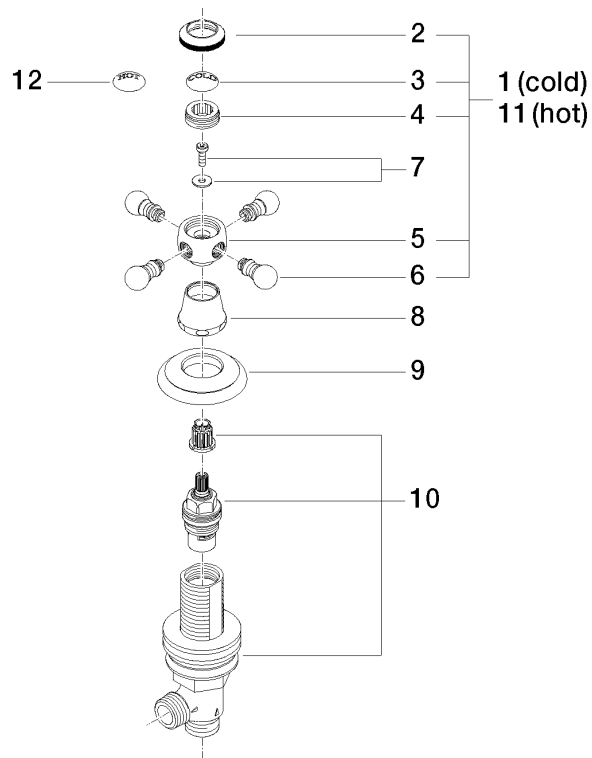
Certificates

---

WRAS\_1810

## MADISON Deck valve clockwise closing cold or hot - Platinum

20 000 360



### Spare parts list

No.	Item Number	Name	Quantity used	Delivery time
1	04 20 36 002 06-08	handle ( cold )	1	40
2	09 20 36 005-08	handle	1	40
3	09 26 01 010 90	accessories	1	2
4	09 20 83 006 90	handle	1	2
5	09 20 36 002-08	handle	1	40
6	09 20 36 004-08	handle	4	40
7	04 30 30 029 00 90	fixing set	1	2
8	09 21 02 046-08	cover	1	40
9	09 27 35 001-08	rosette	1	40
10	90 17 11 040 31 90	side panel	1	2
11	04 20 36 002 07-08	handle ( hot )	1	40
12	09 26 01 011 90	accessories	1	2