

TARA Deck valve clockwise closing cold or hot - Chrome

TARA

20 000 892

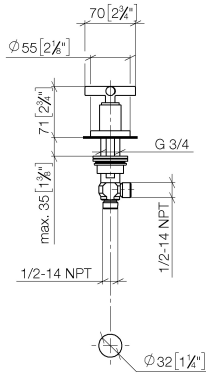


- hole diameter 32 mm
- rosette Ø 55 mm
- WRAS 2112061

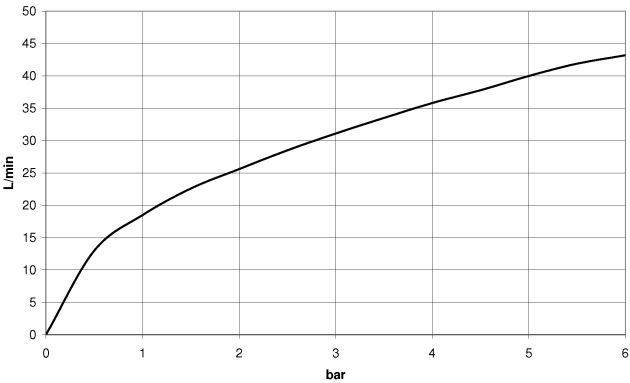
| | | |
|---|-------------------------------------|---------------|
|  | Chrome | 20 000 892-00 |
|  | Brushed Platinum | 20 000 892-06 |
|  | Platinum | 20 000 892-08 |
|  | Dark Chrome | 20 000 892-19 |
|  | Brushed Durabronze (23kt Gold) | 20 000 892-28 |
|  | Matte Black | 20 000 892-33 |
| | Brushed Bronze | 20 000 892-42 |
|  | Brushed Champagne (22kt Gold) | 20 000 892-46 |
|  | Champagne (22kt Gold) | 20 000 892-47 |
|  | Brushed Chrome | 20 000 892-93 |
|  | Brushed Dark Platinum | 20 000 892-99 |

20 000 892

mm [inches]



Flow rate chart



Codes & Standards

ASME A112.18.1

cUPC

Scottish Water
Byelaws

UK Water Supply
Regulations



TARA Deck valve clockwise closing cold or hot - Chrome

TARA

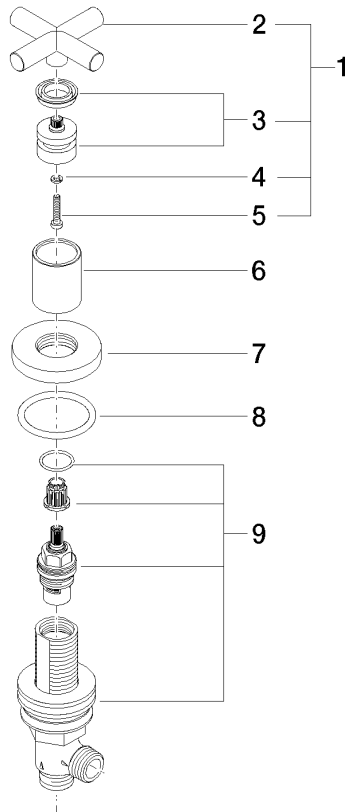
20 000 892

Certificates

IAPMO_4976

WRAS_2112

Parts for other
finishes can be found
here: Brushed
Platinum





TARA Deck valve clockwise closing cold or hot - Chrome

TARA

20 000 892

Spare parts list

| No. | Item Number | Name | Quantity used | Delivery time |
|-----|--------------------|--------|---------------|---------------|
| | 90 20 89 010 10-00 | handle | 9 | 10 |