







# MADISON Three-hole basin mixer with pop-up waste - Durabrand (23kt Gold)

20 700 360 Product version from 7/31/2009



- 135mm projection
- fixed spout
- circular, air-enriched flow
- height of mixer 72 mm
- height up to aerator 40 mm
- hole diameter valve 32 mm
- hole diameter spout 35 mm
- without rosette
- 2x 1/2" x 1/2" high pressure hose
- max. flow 7 l/min
- lead-free
- This product can help a building meet the requirements of Green Building Rating Systems, e.g. LEED®, BREEAM®, DGNB
- WRAS

Only suitable for basins with an overflow.

|   |                               |               |
|---|-------------------------------|---------------|
|  | Durabrand (23kt Gold)         | 20 700 360-09 |
|  | Chrome                        | 20 700 360-00 |
|  | Brushed Platinum              | 20 700 360-06 |
|  | Platinum                      | 20 700 360-08 |
|  | Brushed Durabrand (23kt Gold) | 20 700 360-28 |
|  | Brushed Dark Platinum         | 20 700 360-99 |

## Recommended miscellaneous

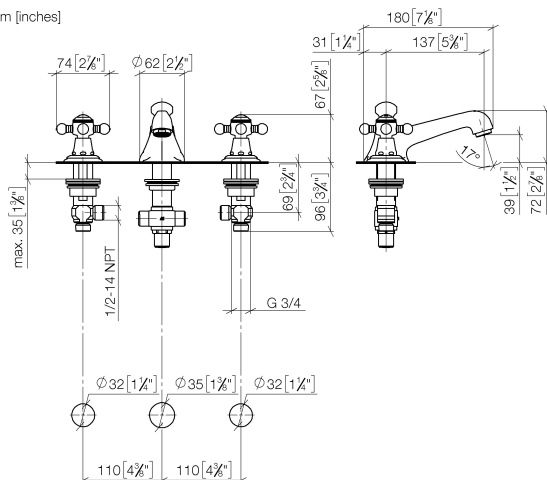


- High pressure hoses -** 12 506 970 90
- 2x 3/8" x 1/2" x 500mm high pressure hose

## MADISON Three-hole basin mixer with pop-up waste - Durabrand (23kt Gold)

20 700 360 Product version from 7/31/2009

mm [inches]



### Flow rate chart



### Codes & Standards

DIN 4109

EN 200

Executive Order  
no. 1007

ISO 3822

Scottish Water  
Byelaws

UK Water Supply  
Regulations

Ü-Zeichen

VA-Zeichen



MADISON Three-hole basin mixer with pop-up waste - Durabrass (23kt Gold)

---

20 700 360 Product version from 7/31/2009

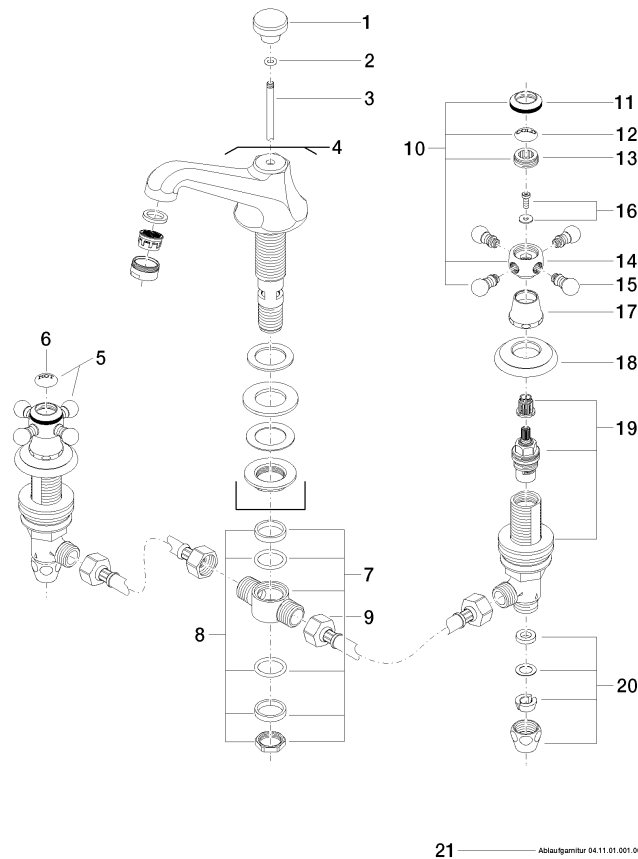
Certificates

---

|          |        |           |       |             |
|----------|--------|-----------|-------|-------------|
| GDV_0400 | ETA_17 | WRAS_1512 | LGA_8 | WRAS_240602 |
|----------|--------|-----------|-------|-------------|

## MADISON Three-hole basin mixer with pop-up waste - Durabronz (23kt Gold)

20 700 360 Product version from 7/31/2009



21 ——— Ablaufgarnitur 04.11.01.001.00.FP

### Spare parts list

| No. | Item Number        | Name               | Quantity used | Delivery time |
|-----|--------------------|--------------------|---------------|---------------|
| 1   | 09 20 36 030-09    | handle             | 1             | 40            |
| 2   | 90 14 10 062 00 90 | seal               | 1             | 2             |
| 3   | 09 31 09 004-09    | pull-rod           | 1             | 40            |
| 4   | 13 700 380-09      | spout              | 1             | 40            |
| 5   | 04 20 36 002 07-09 | handle ( hot )     | 1             | 40            |
| 6   | 09 26 01 011 90    | accessories        | 1             | 2             |
| 7   | 90 17 11 020 10 90 | distributor        | 1             | 2             |
| 8   | 90 23 10 012 00 90 | gasket kit         | 1             | 2             |
| 9   | 04 30 04 096 00 90 | hose               | 2             | 2             |
| 10  | 04 20 36 002 06-09 | handle ( cold )    | 1             | 40            |
| 11  | 09 20 36 005-09    | handle             | 2             | 40            |
| 12  | 09 26 01 010 90    | accessories        | 1             | 2             |
| 13  | 09 20 83 006 90    | handle             | 2             | 2             |
| 14  | 09 20 36 002-09    | handle             | 2             | 40            |
| 15  | 09 20 36 004-09    | handle             | 8             | 40            |
| 16  | 04 30 30 029 00 90 | fixing set         | 2             | 2             |
| 17  | 09 21 02 055-09    | cover              | 2             | 40            |
| 18  | 09 27 35 001-09    | rosette            | 2             | 40            |
| 19  | 90 17 11 040 51 90 | side panel         | 2             | 2             |
| 20  | 90 23 30 040 00-09 | threaded connector | 2             | 40            |
| 21  | 90 11 01 001 00-09 | pop-up waste       | 1             | 40            |