

LULU Three-hole basin mixer with pop-up waste - Chrome

LULU

20 713 710 Product version from 8/31/2015 to 7/22/2021



- 155mm projection
- fixed spout
- circular, air-enriched flow
- height of mixer 114 mm
- height up to aerator 90 mm
- hole diameter valve 32 mm
- hole diameter spout 35 mm
- rosette 47 x 55 mm
- 2x screw-in M 8 x 1 pressure hose, leak-tested
- max. flow 7 l/min
- lead-free
- WRAS
- This product can help a building meet the requirements of Green Building Rating Systems, e.g. LEED®, BREEAM®, DGNB

Only suitable for basins with an overflow.



Chrome

20 713 710-00



Brushed Platinum

20 713 710-06

Recommended miscellaneous



High pressure hoses -

12 506 970 90

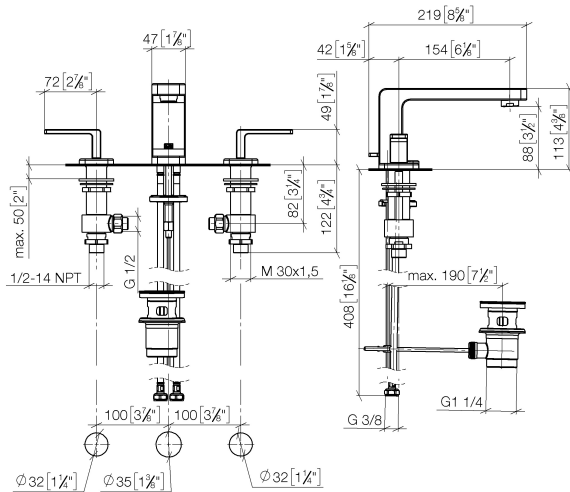
- 2x 3/8" x 1/2" x 500mm high pressure hose

LULU Three-hole basin mixer with pop-up waste - Chrome

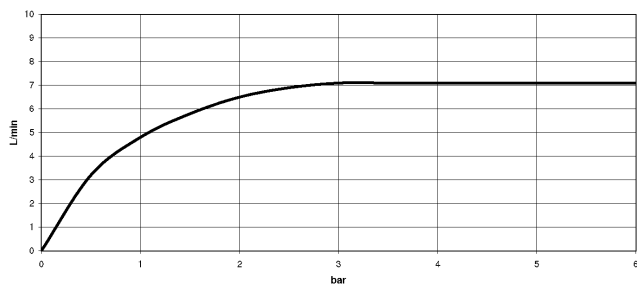
LULU

20 713 710 Product version from 8/31/2015 to 7/22/2021

mm [inches]



Flow rate chart



Codes & Standards

DIN 4109

ISO 3822

Scottish Water
Byelaws

UK Water Supply
Regulations

Ü-Zeichen



LULU Three-hole basin mixer with pop-up waste - Chrome

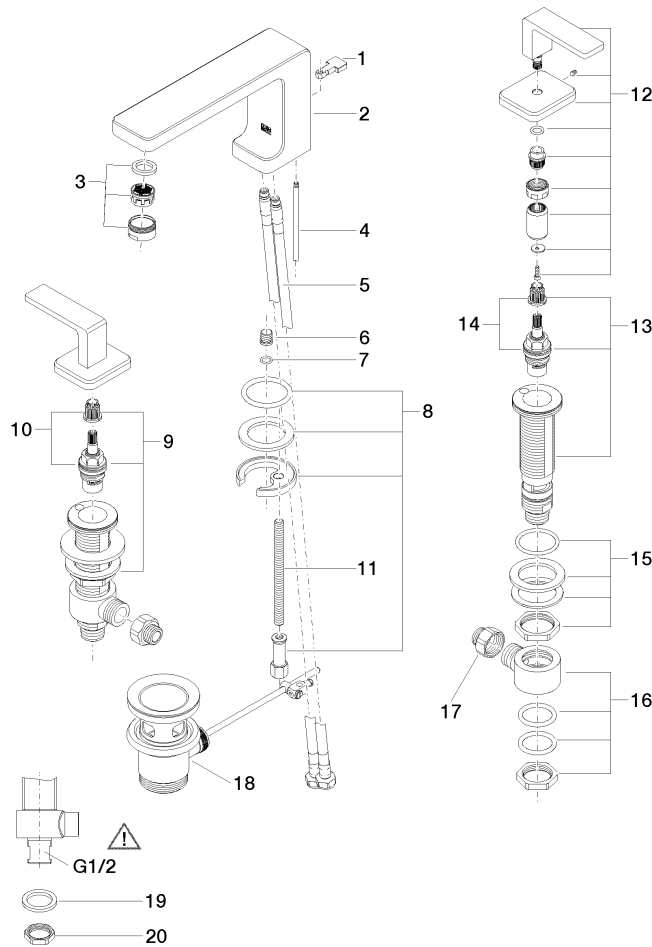
LULU

20 713 710 Product version from 8/31/2015 to 7/22/2021

Certificates and sustainability

LGA_19

WRAS_250402



Spare parts list

| No. | Item Number | Name | Quantity used | Delivery time |
|-----|-----------------------|--------------|---------------|---------------|
| | 8 04 30 11 038 75 90 | fixing set | 1.00 | 2 |
| | 11 09 31 11 012 90 | pin | 1.00 | 2 |
| | 1 09 20 71 033-00 | handle | 1.00 | 10 |
| | 15 04 23 10 032 78 90 | fixing set | 2.00 | 2 |
| | 12 90 20 71 046 01-00 | handle | 2.00 | 10 |
| | 2 09 11 71 095 10-00 | spout | 1.00 | 10 |
| | 10 90 90 03 153 00 90 | top | 1.00 | 2 |
| | 9 04 17 11 058 53 90 | side panel | 1.00 | 2 |
| | 13 04 17 11 058 52 90 | side panel | 1.00 | 2 |
| | 3 90 23 01 118 01-00 | aerator | 1.00 | 10 |
| | 6 09 31 20 065 90 | plug | 1.00 | 2 |
| | 4 09 31 09 080-00 | pull-rod | 1.00 | 10 |
| | 14 90 90 03 152 00 90 | top | 1.00 | 2 |
| | 16 04 17 11 023 10 90 | distributor | 2.00 | 2 |
| | 5 04 30 04 100 00 90 | hose | 2.00 | 2 |
| | 19 09 30 11 059 90 | disc | 2.00 | 2 |
| | 20 09 23 10 012 90 | nut | 2.00 | 2 |
| | 7 90 14 10 060 00 90 | seal | 1.00 | 2 |
| | 17 09 24 03 185-00 | nipple | 2.00 | 10 |
| | 18 90 11 01 001 00-00 | pop-up waste | 1.00 | 10 |