

## VAIA Three-hole basin mixer with pop-up waste - Dark Chrome

VAIA

20 713 819



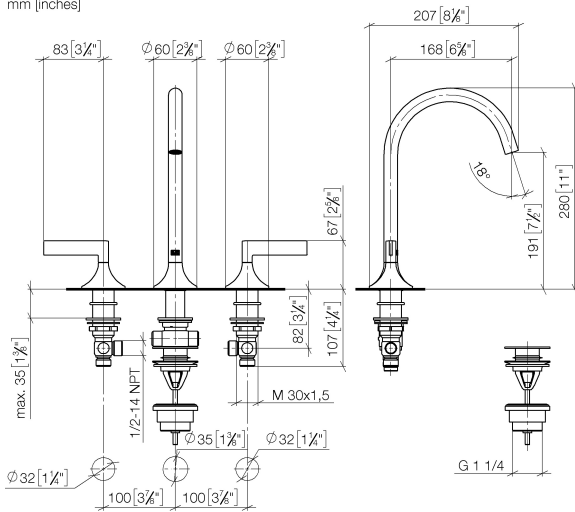
- 168mm projection
- pivotable spout 360°
- circular, air-enriched flow
- height of mixer 280 mm
- height up to aerator 191 mm
- hole diameter valve 32 mm
- hole diameter spout 35 mm
- rosette Ø 60 mm
- max. flow 5.7 l/min
- lead-free
- This product can help a building meet the requirements of Green Building Rating Systems, e.g. LEED®, BREEAM®, DGNB
- WRAS 2312068

Only suitable for basins with an overflow.

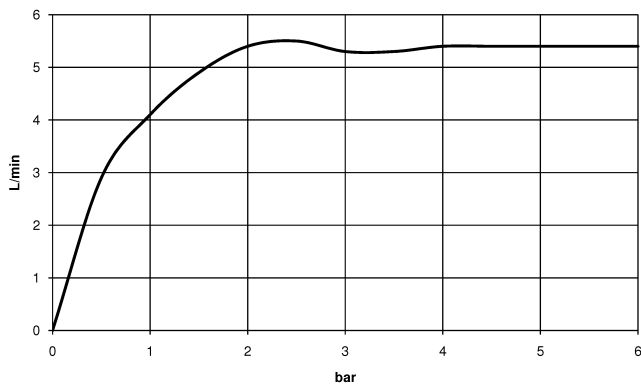
	Dark Chrome	20 713 819-19
	Chrome	20 713 819-00
	Brushed Platinum	20 713 819-06
	Platinum	20 713 819-08
	Brushed Durabronze (23kt Gold)	20 713 819-28
	Brushed Bronze	20 713 819-42
	Brushed Champagne (22kt Gold)	20 713 819-46
	Champagne (22kt Gold)	20 713 819-47
	Brushed Dark Platinum	20 713 819-99

20 713 819

mm [inches]



### Flow rate chart



## Codes & Standards

DIN 4109

Executive Order  
no. 1007

ISO 3822

Scottish Water  
Byelaws

## UK Water Supply Regulations

## Ü-Zeichen



## VAIA Three-hole basin mixer with pop-up waste - Dark Chrome

VAIA

20 713 819

### Certificates

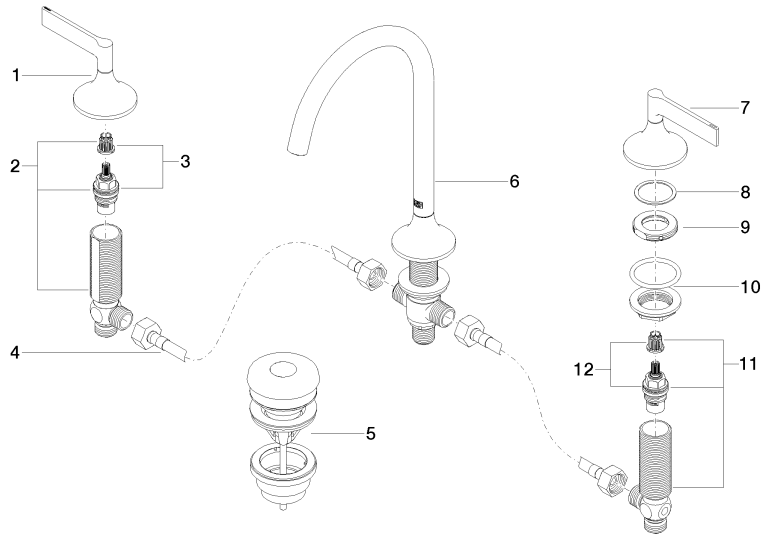
GDV\_0400

LGA\_29

WRAS\_2312

20 713 819

Parts for other  
finishes can be found  
here: [Chrome](#)





## VAIA Three-hole basin mixer with pop-up waste - Dark Chrome

VAIA

20 713 819

### Spare parts list