



## DORNBACHT YAMOU Three-hole basin mixer with pop-up waste - Soft Black

20 713 831



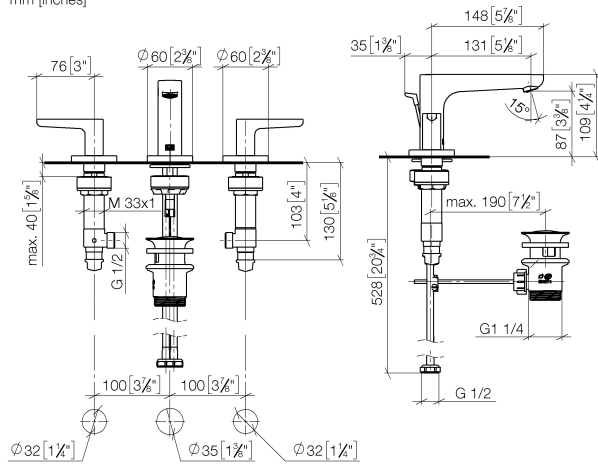
- 125mm projection
- circular, air-enriched flow
- height of mixer 100 mm
- height up to aerator 85 mm
- hole diameter valve 32 mm
- hole diameter spout 35 mm
- rosette Ø 60 mm
- 2x screw-in M 8 x 1 pressure hose, leak-tested
- max. flow 6.8 l/min
- rosette Ø 60 mm
- WRAS 2310319

|  |            |               |
|--|------------|---------------|
|  | Soft Black | 20 713 831-69 |
|  | Chrome     | 20 713 831-00 |

## DORNBRAUCHT YAMOU Three-hole basin mixer with pop-up waste - Soft Black

20 713 831

mm [inches]



### Flow rate chart



### Codes & Standards

DIN 4109

ISO 3822

Scottish Water  
Byelaws

UK Water Supply  
Regulations

Ü-Zeichen

XP P 41-280



## DORNBACHT YAMOU Three-hole basin mixer with pop-up waste - Soft Black

---

20 713 831

### Certificates

---

ACS\_23 ACC NY

AbP\_10

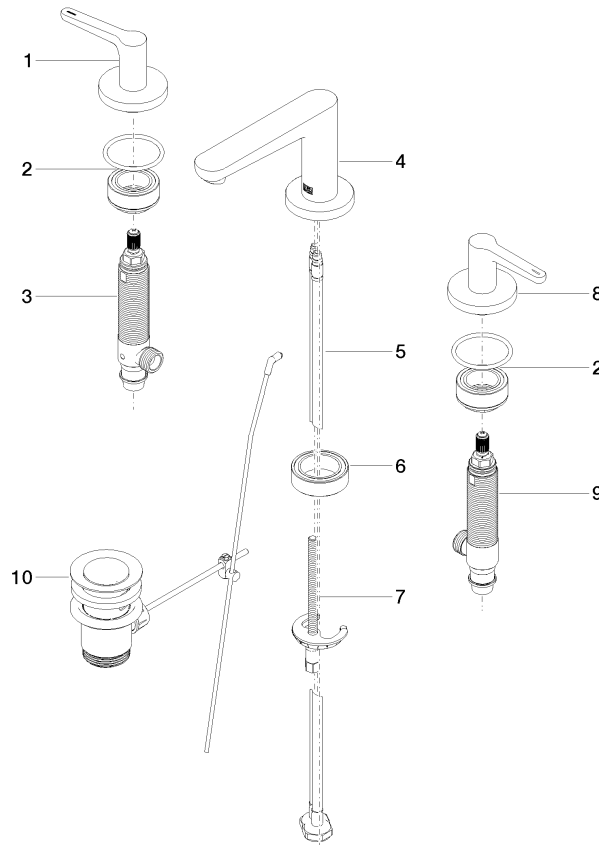
WRAS\_2310

## DORNBRAUCHT YAMOU Three-hole basin mixer with pop-up waste - Soft Black

20 713 831

### Product version from 1/1/2023

Parts for other  
finishes can be found  
here: [Chrome](#)





DORNBACHT YAMOU Three-hole basin mixer with pop-up waste - Soft Black

20 713 831

Spare parts list

Product version from 1/1/2023

| No. | Item Number        | Name           | Quantity used | Delivery time |
|-----|--------------------|----------------|---------------|---------------|
|     | 90 20 83 067 00-69 | handle ( hot ) | 11            | -             |

Spare part can no longer be ordered, please order the replacement item